

PINTO INDEX

1972 PINTO MODELS

2-Door Sedan	1, 2, 3, 4, 5
3-Door Runabout	1, 3, 4, 5

BODY FEATURES

Body Construction	7
Body Insulation	8
Body Sealing Material	7
Doors	9
SEAT BELT REMINDER SYSTEM	8
Heating	9
Hood	10
Headlights	10
Luggage Compartment	9
RUNABOUT REAR DOOR	9
Rust Prevention	7
Seats	8
Six Step Paint Process	8
Ventilation System	9
Windows	10

CHASSIS FEATURES

Brakes	7
Front Suspension	5, 6
Locking Steering Column	6
RACK AND PINION STEERING	6
Rear Suspension	6
Suspension Specifications	6
Tires and Wheels	6
Underbody	5

COLOR AND TRIM	14
----------------	----

DURABILITY, RELIABILITY, SERVICEABILITY	12, 13
--	--------

MARKET DATA	2
-------------	---

OPTIONS

COLOR-GLOW FINISHES	10
Complete Options Listing	11, 12
Cruise-O-Matic Transmission	10
Console with Electric Clock	11
Fold-Down Rear Seat	11
Flipper Rear Quarter Windows	10
Luggage Rack	11
LUXURY DECOR GROUP	10
Manual Disc Brakes	7
SelectAire Air Conditioner	10
Protection Group	11
Trailer Towing Package	12
Wheel Covers	11
2000 CC Engine	10

PINTO PRODUCT HIGHLIGHTS	2
--------------------------	---

POWER TEAM SELECTIONS	13
-----------------------	----

SPECIFICATIONS

Body Dimensions	13
Brake Specifications	13
Power Team Selections	13
Steering Specifications	13
Wheel Specifications	13

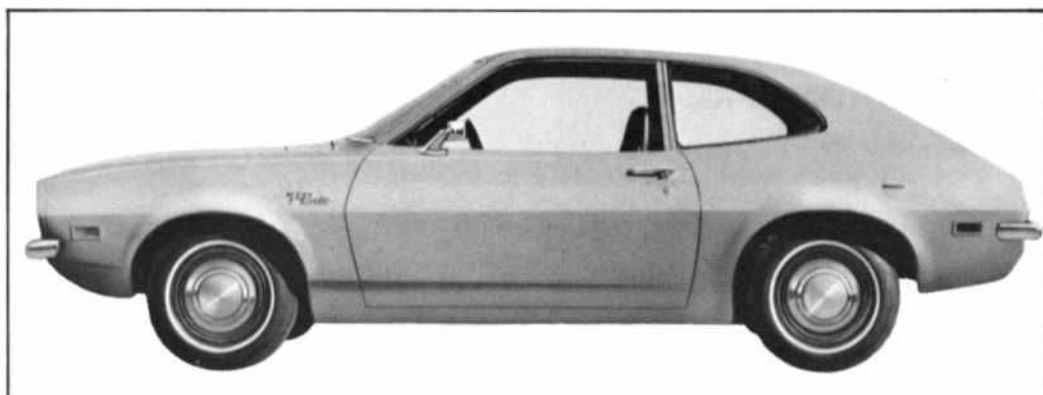
STANDARD EQUIPMENT	4, 5
--------------------	------

Note: New features in bold face type.

PINTO... TWO MODELS

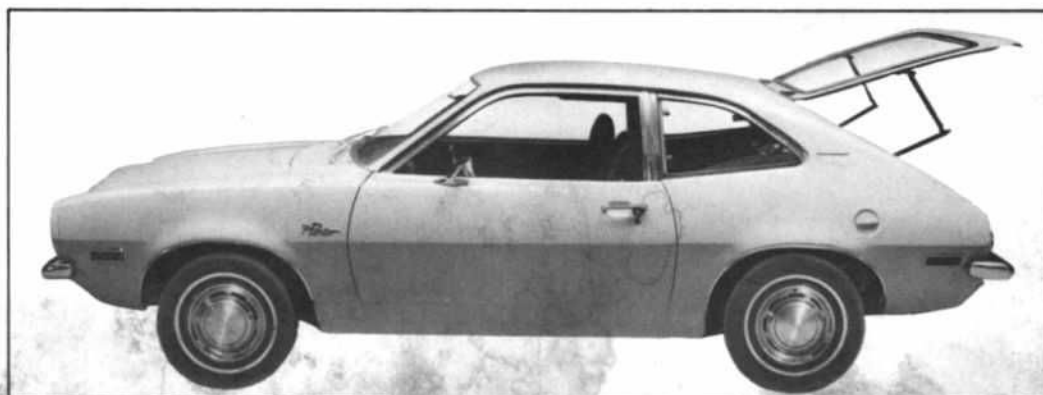
TWO-DOOR SEDAN

	Sales Code No.	Body Code No.
Two-Door Sedan	10	62B



THREE-DOOR RUNABOUT SEDAN

	Sales Code No.	Body Code No.
Three-Door Runabout	11	64B



THE PINTO MARKET



Pinto, the only domestic car to compete head-on in size, price and performance with the leading imports, is being produced for 1972 with minimal change from its very successful 1971 style. From its inception, Pinto was developed to make annual sheetmetal change unnecessary. Rather, changes would be made as the need for them became apparent, without regard to time of year. During the 1971 model run, numerous running changes were made in Pinto to make it a more effective competitor in the subcompact market and to give Ford dealers more product to sell and prospective customers more car for their money. All running changes made during 1971 have been incorporated into the 1972 Pinto.

The subcompact/import segment of the market continues to expand. During 1971, it is estimated that more than 2.2 million vehicles will be sold in this segment of the market, accounting for approximately 23% of industry. Pinto is positioned to be competitive in virtually every aspect of this market segment. Ford salesmen can be confident that Pinto

appeals directly to the purchase motivations, low initial price, excellent fuel economy, ease of handling, value for money, size and styling, which are most important to the small car buyer. In addition, the age, income and education characteristics of 1971 model Pinto buyers parallel very closely those of import car owners.

With Pinto, you are being provided with the opportunity to talk with and to sell customers you have never seen before. These people represent a real plus sales opportunity for Ford dealers. Early surveys indicate that nearly 73% of Pinto buyers would have purchased a car from another manufacturer, either foreign or domestic, if Pinto had not been available. These new owners also form the nucleus of an excellent source of referrals. Almost without exception, Pinto owners have said they would recommend the "little carefree car" to their friends. These recommendations and referrals will provide you with even greater access to competitive owner bodies.

1972 PINTO PRODUCT HIGHLIGHTS

EXTERIOR STYLING

Pinto's low, wide road-hugging sporty car look with long hood/short deck design is continued for '72. This popular contemporary styling is accentuated with the 60-degree slope windshield, sculptured fast-back lines, modern curved side glass, ventless door windows and full wheel cutouts.

The sporty Pinto line includes the 2-door Sedan plus the three-door Runabout which has the added convenience of a lift-up rear door. The rear door has an expanded tinted glass window made of heat resistant tempered glass for safety. This window, which is 8" longer, was designed to enhance the styling of the Runabout and for greater rear-



ward visibility. For both the Sedan and Runabout, five new exterior colors including two new optional Color-Glow finishes enhance Pinto's eye appeal.

(See features pages for further information.)

COMFORT AND CONVENIENCE

Besides sporty looks inside and out, Pinto's wide contemporary design means exceptional interior roominess for drivers and passengers. Continued are very comfortable slim-line high-back front seats. The Sedan has a standard bench-type rear seat while a fold-down rear seat is standard in the Runabout, optional in the Sedan.

All-vinyl trim is standard and available in a choice of six attractive colors. Optional Houndstooth-check cloth or knitted vinyl trim is also available in a wide choice of colors.

The padded instrument panel has a modern, easy-to-read two-pod instrument cluster, outboard-mounted ram-air ventilation registers and a handy glove box. Instrument panel attractiveness is enhanced with new standard bright accents around pods, heater control bezel and vent registers. Fresh air vent controls are improved for '72. The deep-dish steering wheel and collapsible column, formerly black on

1972 PINTO PRODUCT HIGHLIGHTS

all models, are now blue with blue interiors. In addition, a new universal joint on the forward end of the steering column reduces possible transmission of road vibrations to the steering wheel. The dome light bezel is now color-keyed. New front and rear seat belt retractors(*) plus a new positive front seat belt warning system(*) with instrument panel mounted light and buzzer are standard for '72. The foot-operated dimmer switch is now located in a lower, more convenient position and a new, higher displacement master cylinder provides increased brake pedal height.



Front and rear suspension have new lower rate rubber bushings to achieve better sound and vibration insulation.

For those who like FM as well as AM radio listening, a new AM/FM monaural radio option is available. A new front color-keyed vinyl floor mat with carpet inserts will also be available along with many other comfort and convenience options for 1972.

(See features and options pages for additional information).

*December, 1971 availability



ENGINES . . . PERFORMANCE

Pinto's standard power team includes an economical 1600 cc 4-cylinder engine, with recalibrated single barrel carburetor. Also available is a 2000 cc OHC engine for extra power. These, like all Ford Division car engines, operate on regular fuel and feature emission controls. In addition, new exhaust system tuning provides even quieter running.

A four-speed transmission is standard while a Select-Shift Cruise-O-Matic is optional with the 2000 cc engine. This convenient 3-speed automatic transmission permits the driver to enjoy his drive without shifting or to shift through the gear changes as in a manual transmission. The Cruise-O-Matic has been improved for 1972 through the development and incorporation of a larger, more effective oil cooler. Both the standard 4-speed Manual and Select-Shift Cruise-O-Matic transmissions are floor-mounted for a sportier interior appearance and greater driving pleasure. (See features and power-teams pages for more information.)

PINTO SEDANS



MODELS

2-Door Sedan
3-Door Runabout

SALES NUMBER
10
11

STANDARD FEATURES

EXTERIOR

- True subcompact size—94" wheelbase . . . 163" overall length . . . almost 20" wider than it is high, for a low center of gravity resulting in better cornering, greater overall stability

- Sporty long hood/short deck proportions
- Ventless door windows, curved side glass
- One-piece, corrosion resistant, ABS plastic grille
- Sealed beam headlights with exposed adjusting screws
- Side marker lights front and rear
- Parking/turn signal lights
- Backup lights integral with taillights
- Rear license plate light

PINTO SEDANS



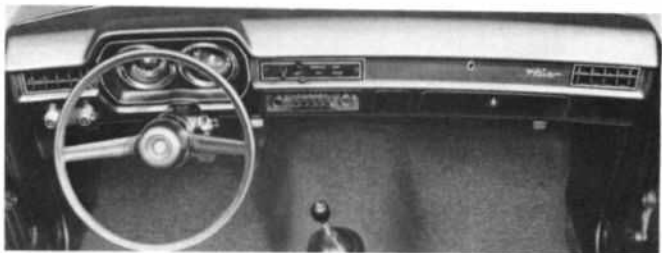
- Rugged one-piece stamped steel chrome-plated bumpers, front and rear
- Bright metal windshield and rear window mouldings
- Tri-Color Pinto emblem on both front fender and decklid
- Bright metal hub caps
- Outside left hand mirror
- 15 Paint colors available (Include 5 new standard plus 2 new optional Color-Glow finishes)
- Acrylic enamel finish with "Electrostatic" paint process (See page E-8)
- All welded unitized body/chassis construction for greater strength and rigidity.

RUNABOUT

- Runabout emblem on "C" Pillar
- Expanded rear glass area

INTERIOR

- Extra wide doors for easy entrance to front and rear compartments
- Roomy interior . . . ample seating for four passengers
- High-back front bucket seats
- All vinyl seat trim
- Color-keyed door trim panels
- Color-keyed floor mats
- Seat belts front and rear with uni-lock shoulder harness for driver and front seat passenger. Front and rear seat belts self adjusting with retractors (*).
- Front seat belt reminder system (*)
- Padded instrument panel . . . features two prominent round cluster pods directly in front of the driver. Pods contain all gauges, speedometer and warning lights. (Bright accents around pods, heater control bezel and and vent registers)
- International pictorial symbols on headlights and washer/wiper knobs
- Deep dish steering wheel with padded hub and "Pony" emblem . . . collapsible column. Black color (blue with blue interior)
- Locking steering column
- Turn signals with lane change feature
- Suspended brake, clutch, and accelerator pedals
- Tunnel mounted parking brake
- Sun visors, safety padded left and right
- Windshield mounted rear-view mirror
- Dome light operated by driver's door switch and integral with headlight switch, color-keyed bezel



- Coat hooks
- Energy absorbing, foam padded front arm rests. Rear arm rests molded integral with quarter panel
- Bright aluminum door scuff plates

RUNABOUT

- Fold-down rear seat standard
 - Color-keyed carpeting throughout, including luggage compartment load floor and fold-down rear seat-back.
- (*) December, 1971 availability

PINTO SEDANS

FUNCTIONAL

- 1600 cc Four-cylinder engine
- Fully synchronized four speed manual transmission
- Precision rack and pinion steering
- Heater-defroster, hot water, blend-air type with 3-speed blower
- High level directaire ventilation system with outboard instrument panel outlets
- Printed circuits in instrument cluster
- Two-speed electric windshield wipers with windshield washers
- Single action hood latch with safety catch
- Keyless door locking with reversible keys
- Bear-hug door latches
- Free-flow aluminized muffler
- Self-adjusting drum brakes

- Independent front coil spring, rear leaf spring suspension system
- Short turning radius of 31.5 feet
- Emission control systems
- 38-ampere alternator
- 45-amp Autolite "Sta-Ful" battery
- Two-year coolant
- Scissors-type car-side jack
- Long-life 6.00 x 13 BSW tires
- 11 gallon capacity fuel tank

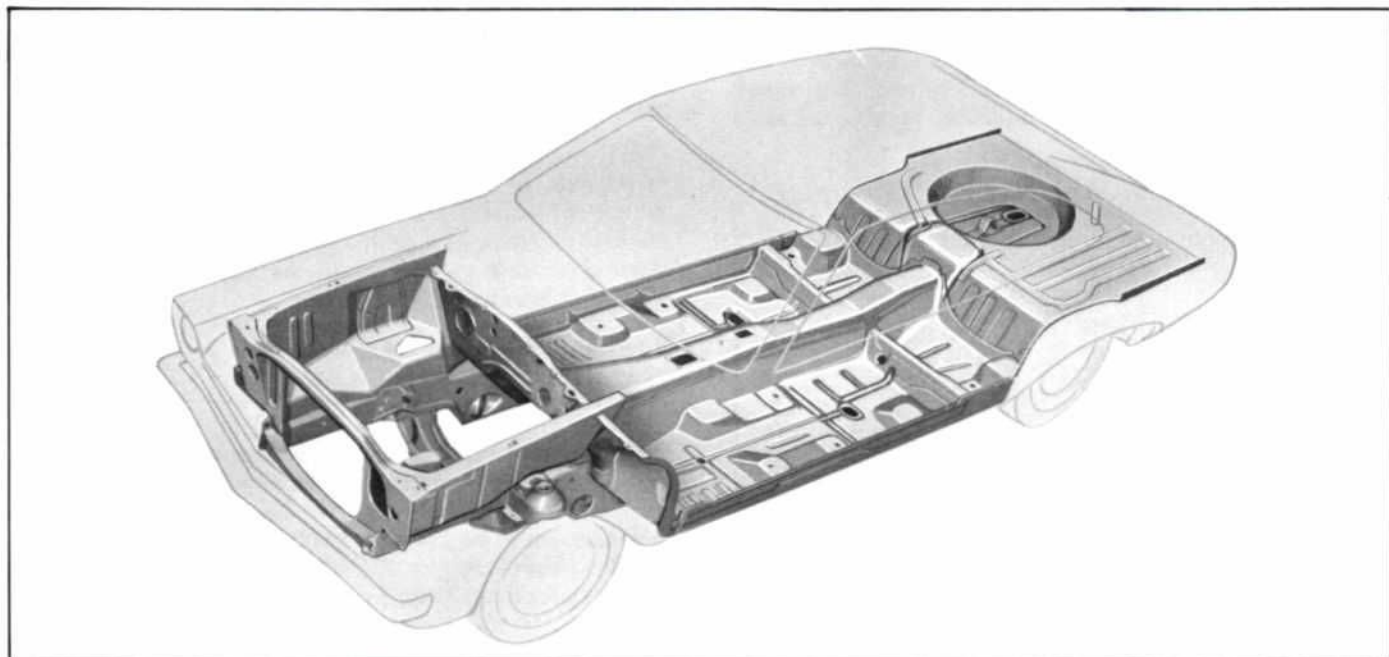
RUNABOUT

- Lift-up third door with greater glass area

In addition to the standard features listed, Pinto also has as standard equipment, the many Ford Lifeguard Design Safety features listed on page ii.

PINTO FEATURES

CHASSIS FEATURES



UNDERBODY

Pinto's platform-type chassis is welded to the body to form an all-welded unit structure. The deep drive line tunnel in the chassis platform forms a sturdy underbody backbone. Features of this design include:

The channel side rails and stiffening cross-members are manufactured of heavy gage sheet steel and are welded to the floor pan to form a strong basic foundation for the car body.

In the engine compartment, full-depth formed panels are welded to the front side rails, the firewall and the boxed cowl. The front rails are in turn tied together by the radiator support and the suspension crossmember, providing maximum strength and rigidity.

The front springs are entirely outboard of the engine compartment allowing maximum freedom within the compartment for convenient servicing of engine and electrical components.

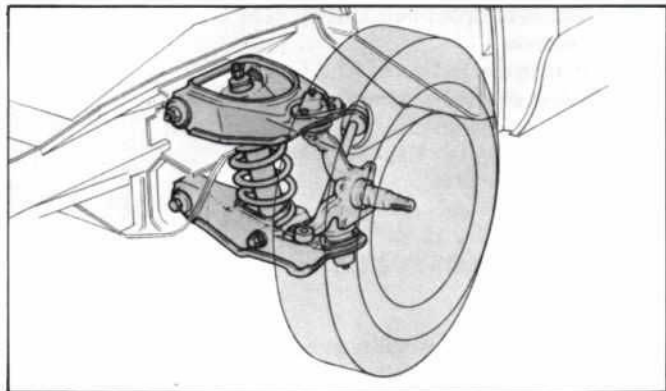
FRONT SUSPENSION

Pinto's "big-car" ride results from the use of a short and long arm type of independent front suspension. This is the same type of suspension used on Ford and Thunderbird. Front suspension features include:

The coil springs are mounted between the lower arms and spring pocket projections of the suspension upper crossmember. Double acting shock absorbers are mounted within the coil springs and are readily accessible for replacement. The design of Pinto's front suspension also eliminates the need for high spring towers, providing more room in the engine compartment.

A rubber mounted strut attached to each lower control arm allows the front wheels to move rearward slightly to soak up part of the initial road shock when the car hits a bump.

PINTO FEATURES

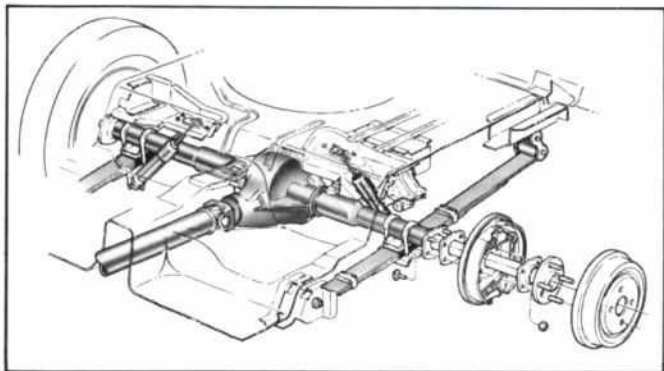


Ball joints and tilted upper control arms combine to minimize the "nose diving" that can occur upon braking.

REAR SUSPENSION

The Pinto's Hotchkiss type rear suspension features rubber bushings at the chassis connection points and Ford "Iso-Clamps" at the axle to spring mounting. The rubber bushings and "Iso-Clamps" prevent metal-to-metal contact thus minimizing noise transfer to the passenger compartment. Features of the system include:

Long 46.5 inch multi-leaf semi-elliptical springs, which smooth out driving and braking forces, have been reduced in stiffness approximately 7% and rear shock absorber valving has been modified to give a softer ride.



PINTO SUSPENSION SPECIFICATIONS

FRONT

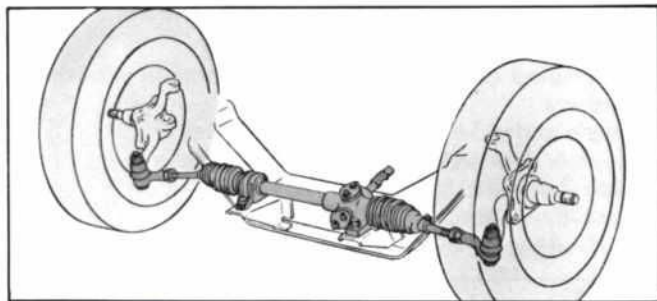
Type	Independent with Ball Joints
Springs	3.50" ID Helical Coil
Shock Absorbers	Direct Acting, Rebound Stop and Integral Jounce Bumper—Front
Steering Knuckle	Integral Spindle and Steering Arm
Wheel Bearings	Single Row, Double Sealed Ball

REAR

Type	Hotchkiss Drive, Semi-Elliptical
Number of Leaves	4
Leaf Length and Width	46.5 x 2.5
Springs Shackles	Compression
Shock Absorbers	Direct Acting, Rebound Stop and Integral Jounce Bumper—Front

Rubber insulated spring anchors help prevent noise transfer to the body.

Staggered shock absorbers (the right is mounted in front of the axle; the left behind it) counteract wheel hop and increase traction during acceleration and braking. The angle positioning of the shock absorbers also reduce side sway. A constant viscosity fluid is used in the shock absorbers to provide uniform performance under all climatic conditions.



RACK AND PINION STEERING

Pinto's rack and pinion steering design—a feature found on many European sports cars—provides precise steering response with minimum effort. In this system a pinion is mounted directly to the steering shaft and engages a linear toothed section (the rack) of the center tie rod. This is a simple, direct and almost frictionless system. It eliminates pitman arm, drag link and conventional gear box. Rack and pinion steering coupled with Pinto's wide tread results in exceptional handling and maneuverability.

The forward end of the steering gear shaft has a new universal joint in place of the former flex cable. Besides permitting the steering gear shaft to deflect in event of collision, the new universal joint design reduces the possibility of road vibrations being transmitted to the steering wheel. (Early 1972 running change.)

See page E-13 for steering specifications.

LOCKING STEERING COLUMN

An anti-theft locking steering column is standard equipment on the Pinto. The locking mechanism is mounted in the steering column and consists of the ignition switch, which is convenient to the driver's right hand, and a locking button, which is convenient to the left hand. The ignition switch has five positions: Accessory . . . Lock . . . Off . . . On . . . Start . . . in that sequence. It operates the starter when turned beyond the "On" position. The key cannot be removed unless the switch is turned off and the left-hand operated locking button depressed. The ignition switch can then be turned to the lock position with the right hand. The steering column is now locked and the ignition key can be removed. To unlock the steering column, merely insert the key and rotate the ignition switch to the desired position as the locking button will pop out automatically. Because both hands are required, this design virtually eliminates the possibility of accidentally locking the steering column—adds to over-all vehicle safety.

TIRES AND WHEELS

All Pinto wheels are of stamped construction with a ventilated disc welded to a safety-type rim.

Four large retaining nuts plus a centering pilot automatically center the wheel on the hub.

The 6.00 x 13 load range B (two-ply/four-ply rating) bias ply black sidewall tire is standard on Pinto. These tires provide excellent mileage, puncture resistance, directional stability and stopping power.

PINTO FEATURES

Chassis Features (Cont'd)

BRAKES

The 1972 Pinto uses a dual hydraulic brake system with a dual chambered master cylinder. Important features of the system are:

New brake master cylinder has higher displacement—increases brake pedal height .7" on standard brakes and .1" on optional front disc brakes for greater brake pedal travel.

Separate brake fluid lines link one master cylinder to the front brakes and the other to the rear brakes to provide operation in the event of hydraulic pressure loss in either line.

An instrument panel light indicates hydraulic pressure loss in either brake line—alerting the driver of the need for immediate repair.

The parking brake, which operates the rear wheel brakes, is controlled by a pull lever conveniently

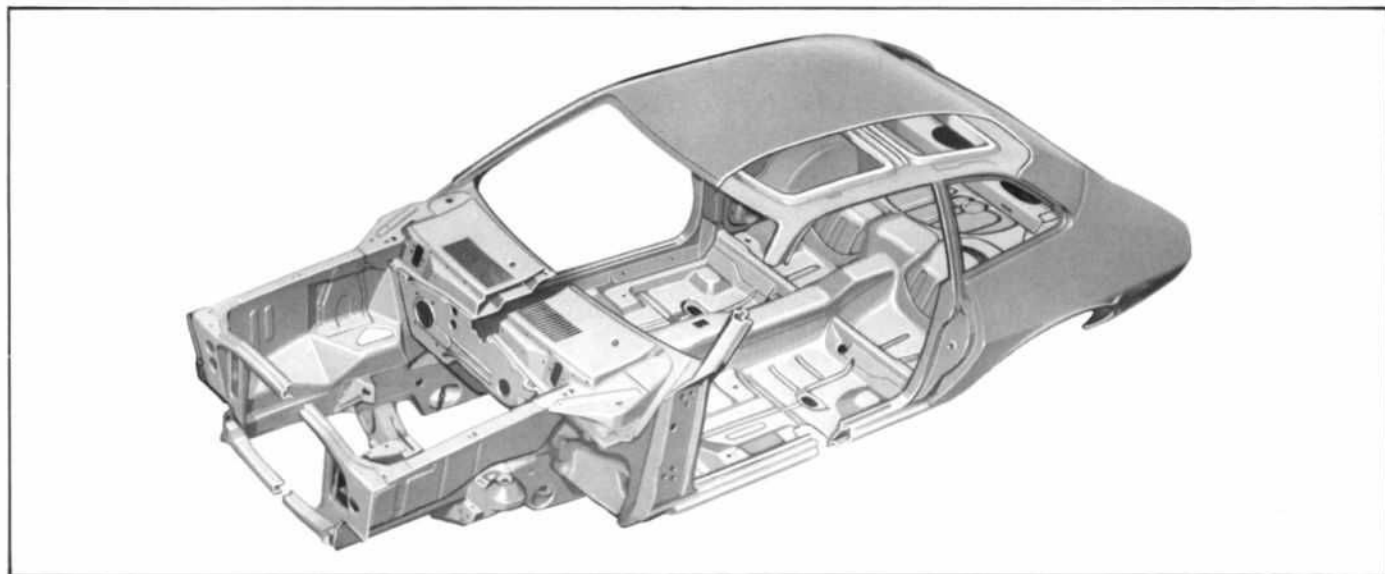
mounted on the tunnel between the two front bucket seats.

Standard brakes on the 1972 Pinto have nine-inch drums, front and rear, with a self-adjustment feature. Brake shoe clearance at each wheel is automatically adjusted as required when the brake is applied as the car is moving in reverse. Brake shoes are of a self-energizing design, and have riveted linings.

Optional front manual disc brakes feature a floating caliper, operated by a single inboard hydraulic piston, with a shoe and lining assembly on either side of the ventilated rotor disc. The design is simple and straightforward, with only five major parts—the caliper housing, caliper anchor plate, the ventilated rotor disc, and the two shoe and lining assemblies. The disc brakes are also self-adjusting. Disc brakes are required at extra cost on models with the 2000 cc engine.

See page E-13 for brake specifications.

BODY FEATURES



BODY CONSTRUCTION

The integral all-welded construction of Pinto bodies provides maximum strength with minimum weight. The body sheet metal and structural members are all solidly welded to the rigid underbody platform to form a completely unitized construction. This type of body construction results in lighter overall vehicle weight, maximum strength and rigidity, improved door, hood and deck lid alignment, fewer water and dust leak problems, and fewer rattles and squeaks. Strong reinforcing members are used at important locations such as roof pillars, roof and body side rails and around the windshield and rear window. Pinto features an entirely new "halo roof" structure. Unlike conventional roof designs, Pinto's "halo roof" does not require separate windshield and backlite headers, inner roof rails, or roof reinforcements. Strong and lightweight, the "halo roof" design permits more head room than would be possible in a car of Pinto's height, but with a conventionally designed roof.

BODY SEALING MATERIAL

A heat-curing vinyl sealing material is applied to the full length of all outer panel seams and joints to effectively seal out dust and moisture.

Windshields and rear windows are sealed with special rubber compound mouldings that retain their elasticity and keep a tight seal without becoming brittle or cracking.

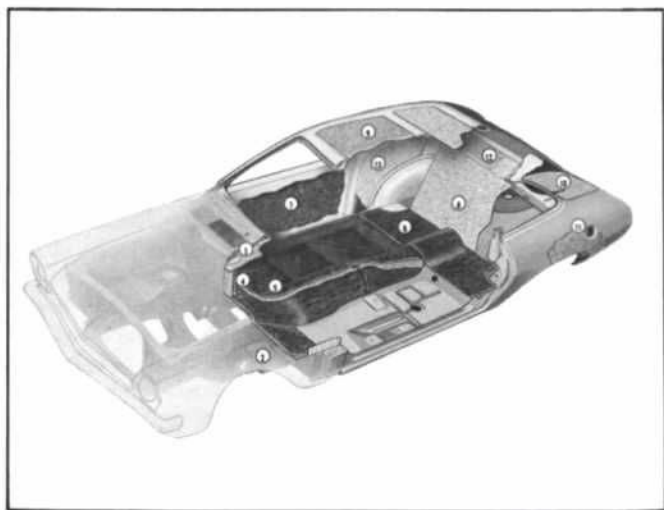
RUST PREVENTION

All Pintos, except those built in California where corrosion is not a significant problem, pass through a special electrocoat paint system. Electrocoating, a patented Ford process, utilizes direct current to deposit the first coat of primer on sheet metal surfaces . . . in a way that actually plates these surfaces with primer. In electrocoating the car body is completely immersed in a special dip tank. While the body is in the tank, it is given a positive electrical charge (+) and electrodes in the tank a negative charge (-). The resulting current flow deposits electrically charged particles of primer uniformly over the entire body. Electrocoating enables boxed-in areas such as rocker panels and cross members to be completely coated with primer.

In addition to electrocoating, areas highly susceptible to corrosion such as, rocker panels and front and rear side rails use galvanized panels. Applications of zinc-rich primer are applied to key areas such as the interior of door panels, wheel splash areas and fenders for additional corrosion protection.

PINTO FEATURES

Body Features (Cont'd)



BODY INSULATION

Numerous acoustical pads, sound isolators and spray-on deadeners are used to form a sound barrier against engine and road noise.

- (1) The hood has mastic adhesive spotted between the inner and outer panel construction.
- (2) Front fenders have a sound deadening coating sprayed on inner housings, including fender openings.
- (3) The dash panel has a one-inch textile pad coated with vinyl.
- (4) The inner cowl top is covered with a one-half inch textile fiber pad absorber. Cowl sides are insulated with the same type of material.
- (5) The front floor toe boards and entire tunnel have one-ply saturated felt deadener.
- (6) The floor area under the rear seat uses a one-ply saturated felt deadener.
- (7) Door panels have spray-on sound deadeners on the inner surface of the outer panels.
- (8) The rear seat area has a 1/2 inch wood fibre pad absorber behind the rear seat which forms a barrier between the luggage compartment and passengers.
- (9) The roof panel has a 1/4 inch thick textile fiber pad blanket which insulates the entire roof panel from front to rear.
- (10) The roof quarter panels are lined with 1/4 inch textile fibre pads.
- (11) Rear wheel housing splash areas are sprayed with a sound deadener.
- (12) The package tray and package tray extensions have a 1/4 inch thick wood-fibre pad absorber.
- (13) The body-side quarter panels are lined with 1/2 inch textile fibre pads.

SEATS

Pinto seats are designed to provide firm yet comfortable

body support. The sports-styled front high-back bucket seats are constructed of formed steel. The cushions are constructed of urethane foam molded around spring and frame elements to form well contoured, comfortable seats. The driver's seat is adjustable and mounted on curved seat tracks which raise the seat for short drivers when it's moved forward and lower it for tall drivers when it's moved back. The passenger seat is in a fixed position. The folding front seat backs self-lock into an upright position. A small knob located near the outboard edge of the seat back releases the lock for rear seat entry.

FRONT SEAT BELT REMINDER SYSTEM

New for 1972 is a standard positive front seat belt reminder system. In addition, seat belt retractors will also be standard for '72 at the front and rear outboard seating positions with the front retractors forming part of the seat belt reminder system. This system includes a light and buzzer mounted on the instrument panel which are activated by sensors if an attempt is made to drive the car without the driver and front seat passenger (if aboard) first fastening their seat belts. The light and buzzer operate when the ignition switch is in the "On" position, the transmission is in any forward or reverse position and the driver's belt is not extended the distance normally used for fastening. If the right outboard seat is occupied, a switch in the seat also activates the system until the passenger seat belt is pulled out the specified distance. When the belt or belts are extended, the light and buzzer go off, and will remain off unless the belts are retracted. (December, 1971 availability).

SIX-STEP PAINT PROCESS

Pinto's super diamond lustre paint finish is achieved through a six step process. Before the triple coats of enamel are applied, the body receives all-over rust protection and two coats of tough epoxy primer. Each primer application is followed by wet-sanding.

The 3-coat acrylic super enamel finish is baked on to form a protective cover over body sheetmetal while providing the deep-luster beauty of a baked-enamel finish.

The final coat of paint on all Pintos is applied by an ELECTROSTATIC PAINTING process. This new system produces a better, more uniform paint finish. The system features a new paint gun that works on the principle that unlike electrical charges attract each other; i.e., positive charged particles attract negative ones. An electrode, extending through the barrel of the gun, is held at a negative potential of 60,000 volts with respect to the part to be painted. As the paint particles near the surface of the part, the electrostatic forces become great enough so that many of those paint particles normally blown past by the air stream are returned to the body surface. The principle advantage of electrostatic painting is its "wrap-around" effect. When painting next to an edge, such as on a deck lid, hood, or door, the paint particles actually will wrap-around and paint the backside due to the strong electrostatic attraction.

Phosphate Coating
First Primer ("Electrocoating")
Second Primer-Epoxy
First Finish Coat
Second Finish Coat
Final Finish Coat ("Electrostatic" Painting)

PINTO STATION WAGONS



SQUIRE OPTION



MODELS

2-Door Pinto Station Wagon

SALES
NUMBER
12

MAJOR STANDARD FEATURES

In addition to or in place of features on the Pinto Sedan

EXTERIOR

- Long 172.7" overall length—9.7" longer than the Sedan
- Bright side and liftgate window mouldings
- Large 28" x 48.8" rear cargo area opening
- Bright belt, "D" pillar and roof rail mouldings

INTERIOR

- Fold-down rear seat for a long load floor length of 69.2" with liftgate closed
- Extra wide 42.5" loadspace between wheelhousings
- Color-keyed carpeting in passenger and cargo areas
- Big 60.5" cubic feet of cargo volume

FUNCTIONAL

- Full, upswinging rear liftgate with fixed backlite and counterbalanced supports
- Flipper rear compartment windows
- 2000 cc 4-cylinder OHC engine
- Manual front disc brakes
- A78 x 13 BSW tires
- Single ignition/door lock key system

SQUIRE OPTION

A unique Squire option is available on the Pinto Station Wagon. This option includes:

EXTERIOR

- Bright wheel covers
- Simulated woodgrain on the bodyside and liftgate with "Squire" script

INTERIOR

- "Super-soft" vinyl seats with choice of pleated vinyl or Manston cloth inserts
- Deluxe door and liftgate trim panels
- Woodgrained applique for automatic transmission PRNDL bezel

- Color-keyed parking brake boot cover
- Bright trimmed instrument panel with woodgrain accents
- Woodgrain shift knob (4-speed only) and parking brake grip
- Bright shift pattern ring for manual transmission
- Deluxe 2-spoke steering wheel
- Deluxe seat and shoulder belts



SQUIRE OPTIONAL INTERIORS

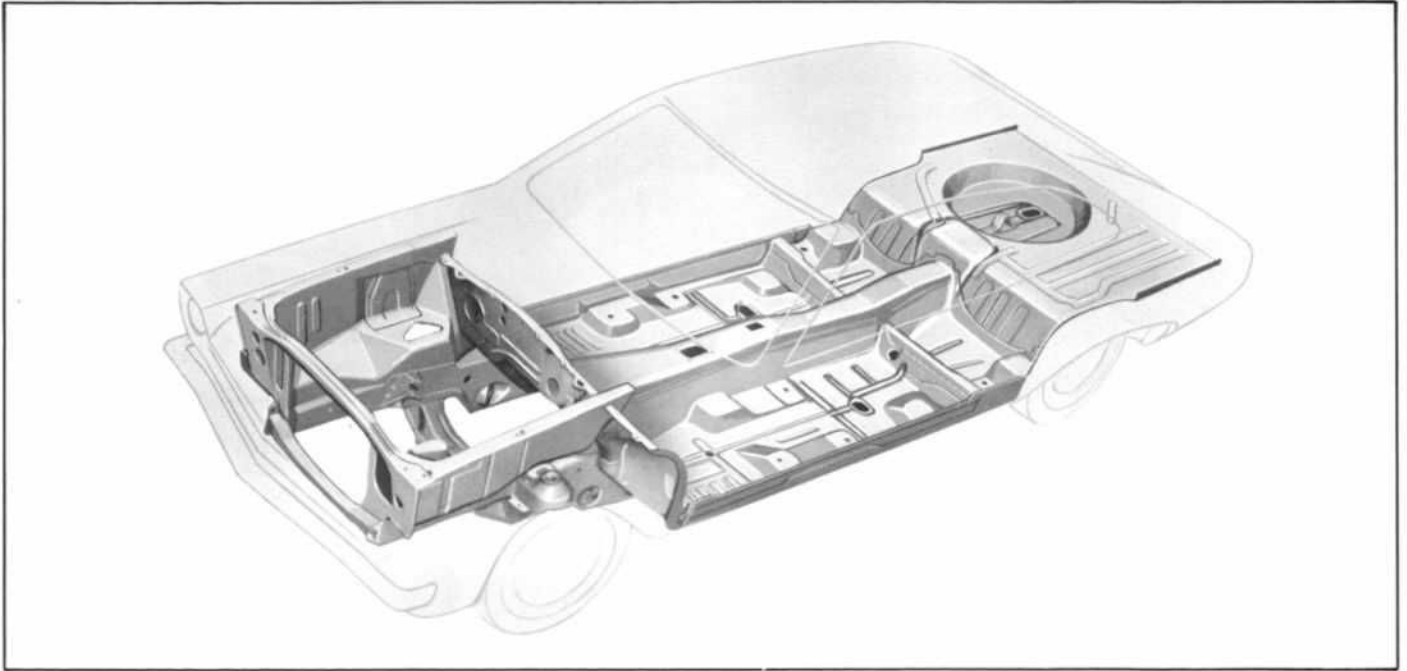


FUNCTIONAL

- Passenger side courtesy lamp switch
- Cigar lighter, rear ash tray
- Cargo area light
- Multi-directional vent registers

PINTO FEATURES

CHASSIS FEATURES



UNDERBODY

Pinto's platform-type chassis is welded to the body to form an all-welded unit structure. The deep drive line tunnel in the chassis platform forms a sturdy underbody backbone. Features of this design include:

The channel side rails and stiffening cross-members are manufactured of heavy gage sheet steel and are welded to the floor pan to form a strong basic foundation for the car body.

In the engine compartment, full-depth formed panels are welded to the front side rails, the firewall and the boxed cowl. The front rails are in turn tied together by the radiator support and the suspension crossmember, providing maximum strength and rigidity.

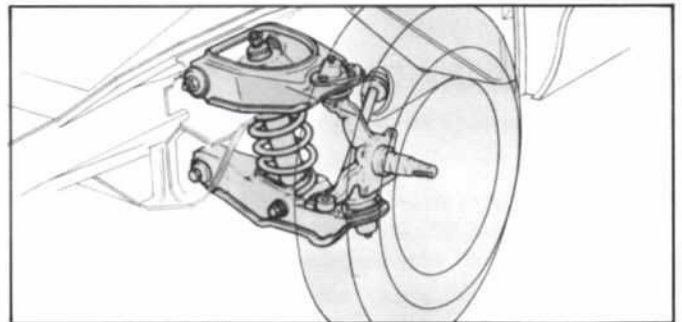
The front springs are entirely outboard of the engine compartment allowing maximum freedom within the compartment for convenient servicing of engine and electrical components.

FRONT SUSPENSION

Pinto's "big-car" ride results from the use of a short and long arm type of independent front suspension. This is the same type of suspension used on Ford and Thunderbird. Front suspension features include:

The coil springs are mounted between the lower arms and spring pocket projections of the suspension upper crossmember. Double acting shock absorbers are mounted within the coil springs and are readily accessible for replacement. The design of Pinto's front suspension also eliminates the need for high spring towers, providing more room in the engine compartment.

A rubber mounted strut attached to each lower control arm allows the front wheels to move rearward slightly to soak up part of the initial road shock when the car hits a bump.

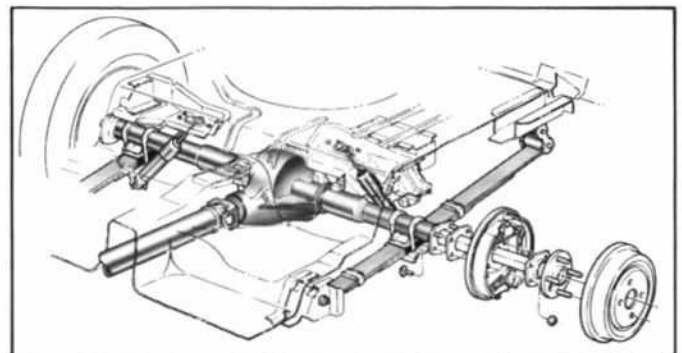


Ball joints and tilted upper control arms combine to minimize the "nose diving" that can occur upon braking.

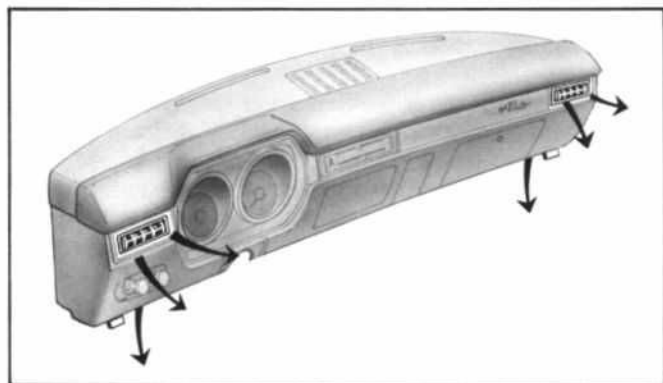
REAR SUSPENSION

The Pinto's Hotchkiss type rear suspension features rubber bushings at the chassis connection points and Ford "Iso-Clamps" at the axle to spring mounting. The rubber bushings and "Iso-Clamps" prevent metal-to-metal contact thus minimizing noise transfer to the passenger compartment. Features of the system include:

Long 46.5 inch multi-leaf semi-elliptical springs, which smooth out driving and braking forces, have been reduced in stiffness approximately 7% and rear shock



PINTO FEATURES



VENTILATION

Pinto's standard DirectAire Ventilation system provides greater comfort for driver and passengers in city and highway driving.

Adjustable air valves located behind the air outlet registers at either end of the instrument panel provide directional control of outside air entering the car.

Push-pull knobs located below the air outlet registers permit control of the air valves.

- With knobs all the way in—air valves are closed.
- With knobs all the way out—air is directed upward toward driver and passenger.
- With knob half way out—air flow is divided so that three-fourths of the flow is directed towards the floor while the remainder is directed upward towards driver and passenger.

HEATING

The Pinto heater-defroster system has been designed to provide maximum heating comfort.

The high capacity hot water system features a powerful three-speed blower to provide heating comfort even in stop and go cold weather driving. Controls for the blower and heater are located in the center of the instrument panel within easy reach of driver and front seat passenger.



LUGGAGE COMPARTMENT

The interior of Pinto's luggage compartment is finished in textured metal with the spare tire stored in a well in the floor. Trunk lid construction features a built-in torsion bar in each hinge to assist in raising the lid and to hold it open. Compression type, neoprene rubber weatherstripping provides protection against dirt and moisture.



RUNABOUT REAR DOOR

The Runabout offers a unique lift-up third door at the back and a fold-down rear seat. The rear door features balance spring assisted hinges at the top that support the door either partially or fully open and enable convenient one hand operation in both opening and closing. The door opening is a generous 51 inches in width. With the rear seat folded down there is a flat cargo space extending to the front seat backs that measure a full 58 inches. The compartment is 63 inches across at its widest point providing plenty of cargo space.



DOORS

Pinto doors are formed into a sturdy box unit by using a double panel, welded construction. Bronze bushed hinges are oil impregnated for long wear and easy opening and closing. The lower hinges are provided with assist springs to aid in opening the doors and to retard slamming when closing. The doors incorporate check straps to hold the doors in the full open position. Bear-hug door latches provide secure closing, easy opening, rattle resistance and help to prevent door opening in the event of a collision. Weatherstripping is mechanically retained by plastic retaining pins rather than adhesive alone, to maintain more positive door sealing against dirt and moisture. Keyless door locking and reversible keys for door and trunk locks are additional Pinto convenience features.

PINTO FEATURES

HOOD

A "halo" inner panel reinforces the Pinto hood construction. Rubber bumpers along the front and sides of the hood provide cushioning against squeaks and rattles. The bumpers are adjustable for leveling the hood with the front fenders. A single-lever hood latch mechanism permits one-hand opening. The latch, located at the center of the grille and hood, is actuated by the release lever which pops the hood open for easy raising, past a safety catch. The hood is held open by a conveniently located prop rod and can be opened a full 90° for added convenience in reaching components in the engine compartment.

WINDOWS

Pinto's one-piece windshield is set at a sixty degree angle to emphasize the car's aerodynamic styling. The windshield is made of two sheets of glass sandwiched to a 30-mil-thick plastic sheet and heat laminated together. This windshield

has exceptional strength and pliability and resists injury-producing penetration in the event of collision.

The Pinto also features ventless front side glass. This window design eliminates the vent window division bar and vent latch and provides improved appearance, reduction in wind noise and increased driver/passenger visibility. All windows are high-strength, impact-resistant heat tempered safety glass. The new larger rear door window on the runabout has tinted glass standard.

HEADLIGHTS

The aim of Pinto's single headlights can be adjusted easily by simply inserting a screw driver into access slots below the headlights. The parking lights go on with the headlights. In the event a headlight burns out the parking lamps remain lit to help provide positive front identification for oncoming drivers.

PINTO OPTIONS

Pinto offers a wide variety of factory-installed options. Owners can select from these items to equip their car to suit their own personal preferences and needs.

2000 CC ENGINE

Pinto's optional 2000 cc engine features an overhead cam, 4-cylinder in-line, five main bearing design. This engine also has a cross-flow cylinder head with large valves and manifolds to provide easy breathing. The exhaust manifold is a branched design to improve efficiency. The valve arrangement and effective overhead camshaft design provide for excellent acceleration and high speed operation. This engine will easily operate at speeds in excess of 6000 RPM. (See additional information in the Power Teams Section.)

SELECTAIRE AIR CONDITIONING

Pinto's SelectAire air conditioning system is fully integrated into the instrument panel and heating system, and is designed to provide year-round passenger comfort through one set of controls on the instrument panel. Cooled air can be delivered through multi-directional high level registers and at the floor level. In the heater mode, the controls permit delivery of heated air through the defroster ducts and at the floor level. In addition, heated air can be directed through the high level registers.

LUXURY DECOR GROUP

This option is available to add an extra measure of luxury to the Pinto. The option includes high lustre bright door and quarter window frames, bright "B" pillar cap, bright drip mouldings, wheel lip mouldings, body side protection moulding, wheel covers, rocker panel moulding, deluxe two-spoke steering wheel, deluxe houndstooth cloth or knitted



FLIPPER REAR QUARTER WINDOWS

The rear quarter window is a pop-open type held in an open/closed position by a toggle latch. This design provides excellent flow-through ventilation.

SELECTSHIFT CRUISE-O-MATIC TRANSMISSION

Ford's famous Cruise-O-Matic is available with the 2000 cc engine. This versatile transmission is fully automatic with three speeds forward. Many competitive automatics for small cars are either not fully automatic or have only two forward speeds. (See the Power Teams Section for additional information.)



vinyl seat trim, deluxe door trim panels, contoured rear seat, woodtone applique, multi-directional vent registers, front cigar lighter, rear seat ashtray, and passenger-side door courtesy light switch.

COLOR-GLOW FINISHES

Two new optional "Color-Glow" metallic finishes, are available on 1972 Pintos in Ivy Glow and Gold Glow which create the illusion of extra depth due to the control and size of the aluminum particles in the special paint formula. The clarity and transparency of the highly durable surface also contributes to the distinctive characteristics of these glamorous new finishes.

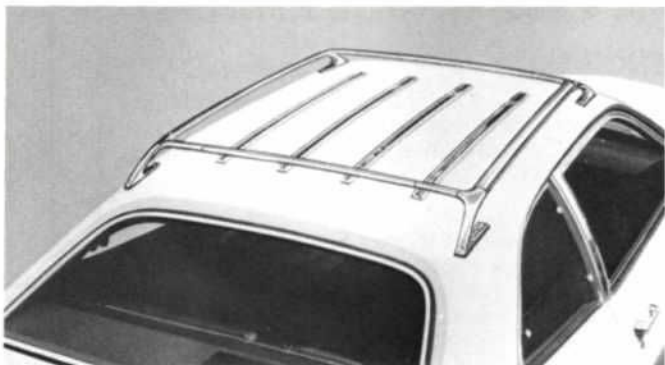
PINTO OPTIONS

CONSOLETTA WITH ELECTRIC CLOCK

Pinto's sporty, tunnel-mounted consolette provides extra storage space and the convenience of an electric clock.

PROTECTION GROUP

Pinto's protection group includes bodyside moulding with vinyl insert, and front and rear bumper guards with rubber inserts.



LUGGAGE RACK

This bright die-cast and stainless steel rack provides extra luggage carrying space. The rack is 33" x 34" and includes four roof slats contour fitted to the roof surface.

WHEEL COVERS

Pinto's bright full wheel cover is available as a separate option and is standard with the accent group and luxury decor group.



FOLD-DOWN REAR SEAT

Pinto's fold-down rear seat option for Sedan converts the rear passenger compartment and trunk into one large storage area, which is accessible from the trunk lid or side doors. The rear seat back of the fold-down rear seat is retained by a single easy-operating latch on the right side. A full-width molded rubber trunk mat is included as part of the fold-down rear seat option. This option is available with all standard and optional seat trims. (Color-keyed carpeting on the luggage compartment floor and fold-down rear seat-back is included as standard equipment on Runabout models.)

PINTO OPTIONS AVAILABILITY

DESCRIPTION

AVAILABILITY*

R D
P L
O R

APPEARANCE EQUIPMENT

Accent Group (Includes body side protection molding with black vinyl insert, bright door and quarter window frames, bright "B" pillar cap, bright drip moldings, wheel lip moldings, and wheel covers. Standard with luxury decor group. N/A with protection group. Requires passenger compartment color-keyed carpeting at extra cost.)

X

Carpeting, Passenger Compartment Color-Keyed (Standard on Runabout. Required at extra cost on models equipped with accent group or luxury decor group.)

X

Consolette with Electric Clock

X

Door, Edge Guards

X

Color-Glow Finishes (Special metallic paint available in Ivy Glow and Gold Glow)

X

Decor Group, Luxury (Includes choice of deluxe houndstooth cloth or knitted vinyl seat trim, body side protection molding with black vinyl insert, bright door and quarter window frames, bright "B" pillar cap, bright drip moldings, wheel

X

DESCRIPTION

AVAILABILITY*

R D
P L
O R

lip moldings, wheel covers, rocker panel moldings, deluxe two-spoke steering wheel, deluxe door trim panels, contoured rear seat, multi-directional vent registers, cigar lighter—front, rear seat ash tray, passenger-side door courtesy light switch, and instrument panel bright dress-up with woodgrain applique. N/A with accent group or protection group. Requires passenger compartment color-keyed carpeting at extra cost.)

X

Rocker Panel Moulding

X

Moulding With Black Vinyl Insert, Body Side Protection (Standard with accent group, luxury decor group, and protection group.)

X

Bumper Guards, front and rear (Includes rubber inserts on bumper guards and bumpers. Standard with Protection Group.)

X

Protection Group (Includes body side molding with black vinyl insert, front and rear bumper guards with rubber inserts, and rub strips on bumpers. N/A with accent group or luxury decor group.)

X

PINTO OPTIONS AVAILABILITY

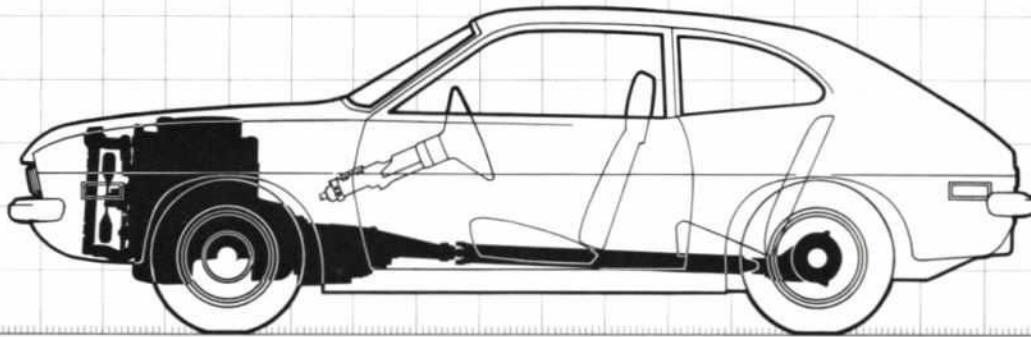
DESCRIPTION AVAILABILITY

	R P O	D L R
APPEARANCE EQUIPMENT (Cont'd)		
Roof, Vinyl (Includes bright drip moulding.) (N.A. on Runabout)	X	
Wheel Covers (Standard with Accent and Luxury Decor Groups.)	X	X
AUDIO EQUIPMENT		
Radio, AM	X	X
Radio, AM/FM Monaural	X	X
COMFORT-CONVENIENCE EQUIPMENT		
Air Conditioner—SelectAire (N.A. with 1600 cc 1V Engine, Tinted Glass recommended.)	X	
Battery, Heavy-Duty, 54-Ampere.	X	X
Convenience Group (Includes deluxe seat belts inside day/night rearview mirror, outside left-hand remote control color-keyed racing mirror, and glove box lock.)	X	
Defogger, Rear Window. (N.A. on Runabout)	X	
Disc Brakes, Manual Front (Required at extra cost on models with 2000 cc engine.)	X	
Glass, Tinted—Backlite (Available only on Runabout.)	X	
Glass, Tinted—Complete.	X	
Luggage Rack—Roof.	X	X
Flipper Rear Quarter Windows.	X	
Seat, Fold-Down Rear (Option for Sedan only; includes molded trunk mat)	X	

DESCRIPTION AVAILABILITY

	R P O	D L R
TRAILER TOWING EQUIPMENT		
Trailer Towing Package (Includes 2000 cc engine, heavy-duty radiator with shroud, trailer hitch, SelectShift Cruise-O-Matic transmission. Manual disc brakes required at extra cost. Not recommended for pulling trailers over 800 lbs. gross trailer weight, and tongue load over 100 lbs. or trailers with over 25 sq. ft. frontal area.)	X	
ENGINES		
2000 cc 4-Cylinder 2V (122 CID) (Requires manual front disc brakes at extra cost.)	X	
Emission Control System, Nitrous Oxide (Required in State of California.)	X	
TIRES		
All Models have (5) 6.00 x 13 Rayon BSW Tires as standard equipment; extra charge for:		
(5) A78 x 13 non-belted, single-band WSW.	X	X
(5) A70 x 13 Belted B/WL (with raised white letters).	X	X
(5) 175R x 13 radial ply WSW	X	X
TRANSMISSIONS		
SelectShift Cruise-O-Matic (Requires 2000 cc 2V engine at extra cost.)	X	
*RPO—Regular Production Options. DLR—Dealer Installed Accessories.		

PINTO DURABILITY AND RELIABILITY . . . SERVICEABILITY



DURABILITY AND RELIABILITY

During its first year, Pinto has provided several hundred thousand owners with millions of miles of reliable, trouble-free transportation. It has performed well in all types of driving and weather conditions. The information derived from these owner miles and Ford's extensive road durability tests have been incorporated into refinements which make the 1972 Pinto an even more durable and reliable means of transportation. These continuing refinements and the design features outlined below mean every Pinto car owner can count on long "carefree" performance.

- **BODY SHEETMETAL**—has extensive corrosion protection and improved paint application process.
- **DOOR SEALS**—are mechanically retained and made of rubber tubing to provide tighter, longer-lasting sealing.
- **FRONT AND REAR BUMPERS**—have ample sheet metal clearances for greater low speed impact protection.

- **ENGINES**—have a 6,000 mile service interval. Twice as long as VW's. The 1600 cc engine uses the same block as the competition-proven Lotus. Production engines are individually run for break-in and testing before installation.
- **CHASSIS**—is lubed-for-life.
- **MANUAL TRANSMISSION**—features internal linkage requiring no linkage adjustment. Because of the internal linkage, the design is unaffected by weathering and corrosion.
- **AUTOMATIC TRANSMISSION**—is designed to handle the output of mid-range V-8 engines.
- **HEAVY-DUTY COMPONENTS**—designed for use in larger cars like Mustang and Torino, are used in rear wheel bearings, universal joints, radiator, windshield wiper motor, alternator and in other mechanical areas.
- **FRONT AND REAR BRAKES**—are designed for normal lining life in excess of 30,000 miles. The brake lines are made of special alloy steel to prevent corrosion.

PINTO DURABILITY AND RELIABILITY . . . SERVICEABILITY

SERVICEABILITY

Pinto's low cost of ownership is, in part, the result of design innovations that make it easy to service, repair and maintain. Components are more readily accessible and less complex than those found in other American cars (except perhaps Maverick) so replacement and service costs are lower. For example:

- **HEADLAMPS**—Each of the headlamps has two exposed screw slots and can be easily aimed with just a screwdriver.
- **INSTRUMENT CLUSTER**—The entire instrument cluster is retained by two easily accessible screws so that it can be pulled out quickly and easily when necessary.
- **FUSE BOX**—The fuse box is located above the brake pedal support for quick access to fuses.

- **HEATER CONTROLS**—The heater controls can be taken out by simply removing two screws.
- **BULBS**—Instrument panel bulbs and small bulbs used in the exterior lighting system are all removable without disassembling major components.
- **PARKING BRAKE**—Unlike most other cars, the parking brake is adjustable from inside the car.
- **BUMPERS**—Front or rear bumpers can be taken off by removing only four or six easily accessible bolts.
- **ENGINE SERVICING**—Engine servicing is made easier because Pinto's hood can be lifted to a full vertical position—eliminating the necessity to remove the hood for certain service operations.

Refer to the "Do-it-yourself" manual for a more extensive write up of Pinto's do-it-yourself features.

PINTO GENERAL SPECIFICATIONS

STEERING SPECIFICATIONS

Linkage	Rack and Pinion Type
Gear Type	Rack and Pinion
Overall Steering Ratio (Manual)	22.1
Turning Diameter (curb-to-curb)	31.5 feet
Steering Wheel Diameter	15.0 inches
Steering Wheel Turns (Lock-to-Lock)	4.16

BRAKE SPECIFICATIONS

Brake Drum Diameter	9"
Disc Brake Rotor Diameter	9.3"
Lining Material	Molded Asbestos
Lining—Front Shoe	9" x 2.00"
—Rear Shoe	9" x 1.38"
Disc Brake Pads—inner working diameter	6.05"
—outer working diameter	9.30"
Lining Attachment	Riveted
Total Lining Area—	
Gross (sq. in.)	99.4
Effective (sq. in.)	93.9
Parking Brake Type	Mechanical
	Actuation of Rear Brakes

WHEEL SPECIFICATIONS

Type	Stamped Steel Disc, Ventilated disc with safety type rims
Number of Studs	Four @ 1/2 x 20
Diameter and Rim Size (inches)	
Standard	13.0 x 4.0

POWER TEAM SELECTIONS

REAR AXLE RATIOS

ENGINE	Transmission	Automatic 3-Speed
	Manual 4-Speed	
Std. 1600 C.C.	3.55	N/A
Opt. 2000 C.C.	3.55	3.18

NOTE: Air Conditioning Available only with Optional 2000 C.C. and 3.55:1 axle ratio.

BODY DIMENSIONS

All dimensions are in inches
unless otherwise specified

2-Door Sedan
and Runabout

GENERAL

Wheelbase	94.0
Tread—Front	55.0
—Rear	55.0
Height—Overall	50.1
Length—Overall	163.0
Width—Overall	69.4
Width at Center Pillar	66.5

FRONT DOOR ENTRANCE ROOM

Door Width—Maximum	44.2
Door Opening—Height	35.6
(suff plate to windcord)	
Foot Clearance	15.4

FRONT SEAT ROOM

Head Room (effective)	37.5
Maximum Leg Room to Accelerator	41.0
Hip Room	51.8
Shoulder Room	52.5

REAR SEAT ROOM

Head Room (effective)	36.3
Effective Leg Room (minimum)	31.7
Hip Room	44.3
Shoulder Room	51.6
Knee Room (minimum)	3.1

LUGGAGE COMPARTMENT

Usable Luggage Capacity (cubic feet)	5.9
Liftover Height	27.2
Total volume with Runabout rear seat or optional rear seat folded down (cubic feet)	17.7

GLASS AREAS (Square Inches) Sedan Runabout

Windshield exposed surface area ..	1057.0	1057.0
Side glass exposed surface area ...	1363.0	1363.0
Backlight glass exposed surface area	753.8	1159.0
Total glass exposed surface area ...	3173.8	3579.0

CURB WEIGHT

Standard Vehicle (lbs.)	2052
Runabout (lbs.)	2097

PINTO COLOR AND TRIM SELECTIONS

Charts shown reflect the color and trim combinations. Exterior colors and codes are in the first chart and the trim combinations follow. Colors and codes referenced are the same as those shown in your Color and Upholstery Book.

EXTERIOR COLORS AND CODES			
COLOR	CODE	COLOR	CODE
White	9A	Medium Lime	4F
Bright Red	2B	Metallic	
Medium Coral	2A	Tan	5L
Bright Blue Metallic	3J	Medium Brown	
Grabber Blue	3F	Metallic	5H
Light Blue	3B	Medium Yellow	
Dark Green	4Q	Gold	6C
Metallic		Medium Bright	6E
Medium Green	4P	Yellow	
Metallic		Ivy Glow	4C*
		Gold Glow	6F*

*Extra cost Color Glow Paint

SEDAN AND RUNABOUT			
ALL VINYL BUCKET—STANDARD			
INTERIOR TRIMS		EXTERIOR COLOR	
COLOR	CODE	AVAILABILITY CODES	
Black	AA	All	
Medium Blue	AB	9A, 3J, 3B	
Medium Ginger	AF	9A, 4Q, 5H, 5L, 6C, 6E, 6F	
Medium Green	AR	9A, 4C, 4F, 4P, 4Q	
Medium Beige	AT	9A, 4Q, 5H, 5L, 6C, 6E, 6F	
White/Black	AW	All	
White/Blue	AL	9A, 3J, 3B	
White/Ginger	AS	9A, 4Q, 5H, 5L, 6C, 6E, 6F	
White/Green	A5	9A, 4C, 4F, 4P, 4Q	

SEDAN AND RUNABOUT		
CLOTH AND VINYL BUCKET—OPTION		
INTERIOR TRIMS		EXTERIOR COLOR
COLOR	CODE	AVAILABILITY CODES
Black	BA	All
Medium Blue	BB	9A, 3J, 3B
Medium Ginger	BF	9A, 4Q, 5H, 5L, 6C, 6E, 6F
Medium Green	BR	9A, 4C, 4F, 4P, 4Q
Medium Beige	BT	9A, 4Q, 5H, 5L, 6C, 6E, 6F
White/Black	BW	All
White/Blue	BL	9A, 3J, 3B
White/Ginger	BS	9A, 4Q, 5H, 5L, 6C, 6E, 6F
White/Green	B5	9A, 4C, 4F, 4P, 4Q

SEDAN AND RUNABOUT		
KNITTED VINYL BUCKET—OPTION		
INTERIOR TRIMS		EXTERIOR COLOR
COLOR	CODE	AVAILABILITY CODES
Black	CA	All
Medium Blue	CB	9A, 3J, 3B
Medium Ginger	CF	9A, 4Q, 5H, 5L, 6C, 6E, 6F
Medium Green	CR	9A, 4C, 4F, 4P, 4Q
Medium Beige	CT	9A, 4Q, 5H, 5L, 6C, 6E, 6F
White/Black	CW	All
White/Blue	CL	9A, 3J, 3B
White/Ginger	CS	9A, 4Q, 5H, 5L, 6C, 6E, 6F
White/Green	C5	9A, 4C, 4F, 4P, 4Q

VINYL ROOFS			
ROOF COLOR	CODE	EXTERIOR PAINT	INTERIOR TRIM
Black	1	All	All
White	2	All	All

PINTO OPTIONS

SELECTAIRE AIR CONDITIONING

Pinto's SelectAire air conditioning system is fully integrated into the instrument panel and heating system, and is designed to provide year-round passenger comfort through one set of controls on the instrument panel. Cooled air can be delivered through multi-directional high level registers and at the floor level. In the heater mode, the controls permit delivery of heated air through the defroster ducts and at the floor level. In addition, heated air can be directed through the high level registers.



FOLD-DOWN REAR SEAT

Pinto's fold-down rear seat option for Sedan converts the rear passenger compartment and trunk into one large storage area, which is accessible from the trunk lid or side doors. The rear seat back of the fold-down rear seat is retained by a single easy-operating latch on the right side. A full-width molded rubber trunk mat is included as part of the fold-down rear seat option. This option is available with all standard and optional seat trims. (Color-keyed carpeting on the luggage compartment floor and fold-down rear seat-back is included as standard equipment on Run-about models as shown above.)

ACCENT GROUP

Available on all Pinto models, standard with Luxury Decor Group, this attractive option includes body side protection moulding with black (brown on Squire option) vinyl insert, wheel lip mouldings and wheel covers. Two, and three door sedans also include bright door, and quarter window frames, bright "B" pillar cap and bright drip mouldings. Color-keyed passenger compartment carpeting required at extra cost on 2-door sedan. Not available with Protection Group.

SPORTS ACCENT GROUP

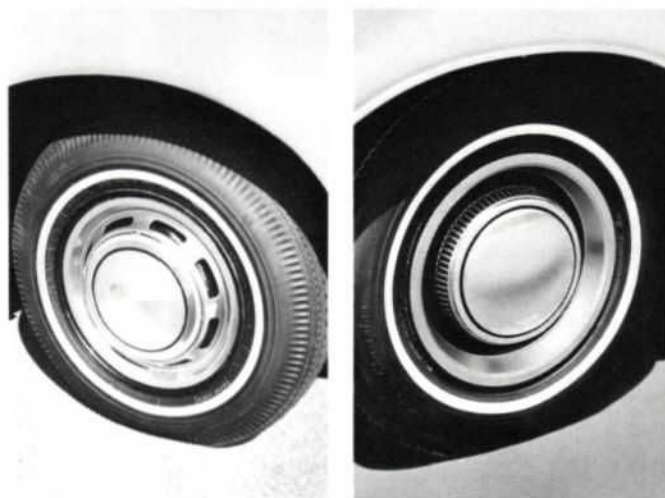
A new option for mid-1972 and available on all 2- and 3-door sedan models, this feature includes: Manston cloth seat inserts in avocado or orange, deluxe seat and shoulder belts, the Luxury Decor Option product content—with the rocker panel moulding and bodyside protection moulding deleted.



Two-tone lower bodyside treatment in avocado or orange, and 25 oz. cut pile carpet in avocado or orange. All models have white exterior body color, with inside trim scheme and two-tone accent color in avocado or orange. A vinyl roof in avocado or orange is included. 175R x 13 WSW steel belted radial ply tires are also part of the group. (April availability.)

WHEEL COVERS

Pinto's bright full wheel cover is available as a separate option and is standard with the Accent group and Luxury Decor group.



TRIM RINGS/HUB CAPS

The "action-styled" trim ring/hub cap combination is optional on all models.

PINTO OPTIONS AVAILABILITY

DESCRIPTION	AVAILABILITY*		DESCRIPTION	AVAILABILITY*	
	R P O	D L R		R P O	D L R
APPEARANCE EQUIPMENT					
Accent Group (See page E-15 for content.)	X		hand remote control color-keyed racing mirror, and glove box lock.)	X	
Bumper Guards, front and rear (Includes rubber inserts on bumper guards and bumpers. Standard with Protection Group.)	X		Defogger, Rear Window (N/A on Runabout, Station Wagon, or with rear window electric defrost.)	X	
Carpeting, Passenger Compartment Color-Keyed (Standard on Runabout and Wagon. Required at extra cost on models equipped with Accent Group or Luxury Decor Group.)	X		Disc Brakes, Manual Front (Required at extra cost on models with 2000 cc engine. Standard on Station Wagons.)	X	
Color-Glow Finishes (Special metallic paint available in Ivy Glow and Gold Glow.)	X	X	Electric Defrost, Rear Window (N/A on Runabout models equipped with 1600 cc engine. N/A with rear window defogger.)	X	
Decor Group, Luxury (N/A with Accent or Protection Groups. Requires passenger compartment color-keyed carpeting on 2-door model at extra cost. Models ordered with tu-tone lower bodyside tape/paint option will have rocker panels deleted. See page E-14 for content.)	X		Flipper Rear Quarter Windows	X	
Door Edge Guards	X	X	Glass, Tinted — Backlite (Available only on Runabout.)	X	
Moulding With Black Vinyl Insert, Body Side Protection (Standard with Accent Group, Luxury Decor Group, and Protection Group. Brown moulding and vinyl insert for Squire Station Wagon.)	X		Glass, Tinted—Complete	X	
Protection Group (Includes body side moulding with black vinyl insert, front and rear bumper guards with rubber inserts, and rub strips on bumpers. N/A with Accent Group or Luxury Decor Group.)	X		Luggage Rack — Roof (N/A with models equipped with sunroof.)	X	X
Rocker Panel Moulding (Standard with luxury decor group. N/A with tu-tone lower bodyside tape/paint option.)	X		Mirrors, Outside Color-Keyed Dual Racing (Includes left-hand remote control and right-hand manual control mirrors. N/A with special paint (DSO or PTO.)	X	
Roof, Vinyl (Includes bright drip moulding. N/A on Station Wagon. Available with luggage rack or sunroof.)	X		Seat, Fold-Down Rear (Includes load floor color-keyed carpeting. Standard on Runabout and Wagon.)	X	
Sports Accent Group (N/A with bodyside and rocker panel mouldings, or on Station Wagon. See page E-15 for content.) (April '72)	X		Starter Interlock	X	
Squire Option (Available only on Station Wagon. See page E-7 for content.)	X		Sunroof, Manual Operated (N/A with roof luggage rack or on Station Wagon.)	X	
Steering Wheel, Leather Wrapped (May '72)	X	X	TRAILER TOWING EQUIPMENT		
Tape/Paint, Tu-Tone Lower Bodyside (N/A with bodyside and rocker panel mouldings, or on Station Wagon.) (May '72)	X		Trailer Towing Package (Includes heavy-duty radiator and shroud. Requires 2000 cc 2v engine, Cruise-O-Matic transmission, and manual disc brakes at extra cost. Not recommended for pulling trailers over 800 lbs. gross trailer weight, and tongue load over 100 lbs. or trailers with over 25 sq. ft. frontal area.)		
Trim Rings/Hub Caps	X	X	N/A on Station Wagons.	X	
Wheel Covers (Standard with Accent and Luxury Decor Groups.)	X	X	ENGINES		
AUDIO EQUIPMENT					
Radio, AM	X	X	2000 cc 4-Cylinder 2v (122 CID) (Requires manual front disc brakes at extra cost. Standard on Station Wagon.)	X	
Radio, AM/FM Monaural	X	X	Emission Control System Nitrous Oxide (Required in State of California.)	X	
COMFORT-CONVENIENCE EQUIPMENT			TIRES		
Air Conditioner—SelectAire (N/A with 1600 cc 1v Engine, Tinted Glass recommended.)	X		All Sedan and Runabout models have (5) 6.00 x 13 (A78 x 13 on Station Wagon) BSW tires as standard equipment; extra charge for:		
Battery, Heavy-Duty, 54-Ampere	X	X	(5) A78 x 13 non-belted, single-band WSW.	X	X
Convenience Group (Includes deluxe seat belts, inside day/night rearview mirror, outside left-	X		(5) A70 x 13 belted B/WL (with raised white letters.)	X	X
			(5) 175R x 13 radial ply WSW.	X	X
			TRANSMISSIONS		
			SelectShift Cruise-O-Matic (Requires 2000 cc 2v engine at extra cost.)	X	
			*RPO—Regular Production Options.		
			DLR—Dealer Installed Accessories.		

PINTO COLOR AND TRIM GUIDE

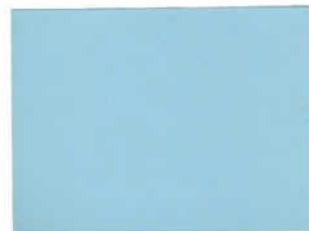
EXTERIOR COLORS



2A Med. Coral



2B Brt. Red



3B Lt. Blue



3F Grabber Blue



3J Brt. Blue Met.



4F Med. Lime Met.



4P Med. Green Met.



4Q Dk. Green Met.



5H Med. Brown Met.



5L—Tan



6C Med. Yellow Gold



6E Med. Brt. Yellow



9A White



4C Ivy Glow
(RPO)



6F Gold Glow
(RPO)

PINTO COLOR AND TRIM GUIDE

INTERIORS

VINYL (Std.) 2 Dr. Sedan & 3 Dr. Runabout



Med. Green

Black

Med. Blue

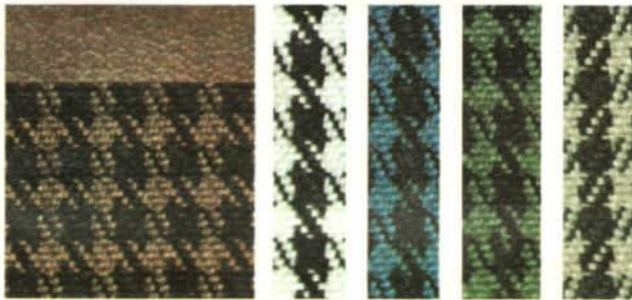
Ginger

Beige

(Not Available Luxury Decor or Luxury Interior Group)

Also Available in White w/Black, White w/Blue, White w/Green, White w/Ginger—Not Illustrated.

CLOTH & VINYL (Opt.) 2 Dr. Sedan & 3 Dr. Runabout



Ginger

Black

Med. Blue

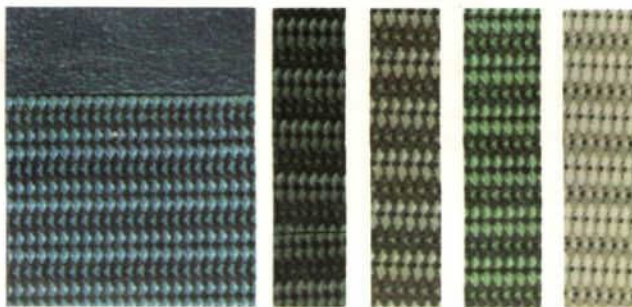
Med. Green

Beige

(Available Only with Luxury Decor or Luxury Interior Group)

Also Available in White w/Black, White w/Blue, White w/Green, White w/Ginger—Not Illustrated.

KNITTED VINYL (Opt.) 2-Dr. Sedan & 3 Dr. Runabout



Med. Blue

Black

Ginger

Med. Green

Beige

(Available Only with Luxury Decor or Luxury Interior Group)

Also Available in White w/Black, White w/Blue, White w/Green, White w/Ginger—Not Illustrated.