

# '78 Ford Fleet

CONFIDENTIAL  
PREVIEW

## MUSTANG II



Mustang II Two-Door Hardtop



Mustang II Standard Interior Trim—Shown in Black Vinyl



Mustang II Two-Door Ghia Hardtop



Mustang II Instrument Panel



Mustang II Three-Door 2+2



Mustang II Fold-Down Rear Seat

NOTE: The description and specifications contained in this sheet were in effect at the time the publication was approved for printing. Ford, whose policy is one of continuous improvement, reserves the right to discontinue at any time, or change specifications or design without notice or without incurring obligations. All options and accessories illustrated or referred to as optional or available in this sheet are at extra cost.



# MUSTANG II — INDEX

## GENERAL SECTIONS

<b>1978 Highlights</b> .....	<b>2</b>
<b>Model Availability</b> .....	<b>3</b>
<b>Color and Trim Selections</b> .....	<b>4</b>
<b>Major Standard Features</b> .....	<b>5</b>
<b>Standard Equipment Summary</b> .....	<b>9</b>
<b>Selected Option Descriptions</b> .....	<b>10</b>
<b>Optional Equipment Summary</b> .....	<b>15</b>
<b>Chassis Features</b> .....	<b>17</b>
<b>Body Features</b> .....	<b>19</b>
<b>General Specifications</b> .....	<b>21</b>

## SPECIFIC FEATURES

Air Conditioning .....	10
Appearance Decor Group .....	11
Body Construction .....	19
Body Sealing Material .....	20
Brake Specifications .....	23
Brakes, Front Disc/Rear Drum .....	18
Bucket Seats, 4-Way Adjustable .....	11
Bumpers, Urethane-covered .....	20
Clock, Digital .....	12
Cobra II .....	14
Convenience Group .....	11
Curb Weights .....	23
Dimensions/Specifications .....	22
Door Construction .....	20
Engine/Transmission/Axle Ratio Combinations .....	22
Exterior Accent Group .....	11
Fashion Accessory Package .....	11
Ghia Sports Group .....	13
Heating System .....	20
Hood Construction .....	20
Instrument Panel .....	21

Insulation/Soundproofing .....	19
King Cobra .....	14
Light Group .....	11
Luggage Compartment .....	21
Luxury Interior Group .....	11
Molding, Wide Vinyl-Insert Bodyside .....	11
Platform Construction .....	17
Radio, AM/FM Stereo Radio with Cassette Tape .....	10
Rallye Appearance Package .....	13
Rallye Package .....	12
Rear Window Defroster, Electric .....	10
Roof, Flip-Up Open Air .....	10
Seat Construction .....	21
Steering, Rack & Pinion .....	18
Steering Specifications .....	23
Steering Wheel, Leather- Wrapped Sport .....	12
Subframe .....	17
Suspension, Front .....	17
Suspension, Rear .....	18
"T" Roof Convertible .....	13
Third Door .....	20
Tire Availability .....	23
Transmission, Manual .....	18
Ventilation System .....	20
Vinyl Roof .....	12
Wheel Covers, Wire .....	12
Wheel Specifications .....	23
Wheels, Cast Aluminum Spoke .....	12
Wheels, Forged Aluminum .....	12
Wheels, White Painted Forged Aluminum .....	12
Wheels, Painted Cast Aluminum Spoke .....	12
Wheels, Styled Steel with Trim Rings .....	12
Window Construction .....	20

## MUSTANG II — 1978 HIGHLIGHTS

### STANDARD FEATURES

- HD 45amp.-hour battery (except in California)
- Rear stabilizer bar

### OPTIONS

- King Cobra
- Cobra II
- Fashion Accessory Package
- White Painted Forged Aluminum Wheels
- AM/FM Stereo Radio w/Cassette Tape
- Variable ratio power rack-and-pinion steering





# MUSTANG II — MODEL AVAILABILITY

## TWO-DOOR MODELS

	Sales Code	Body Code
Hardtop	02	60F
Ghia	04	60H



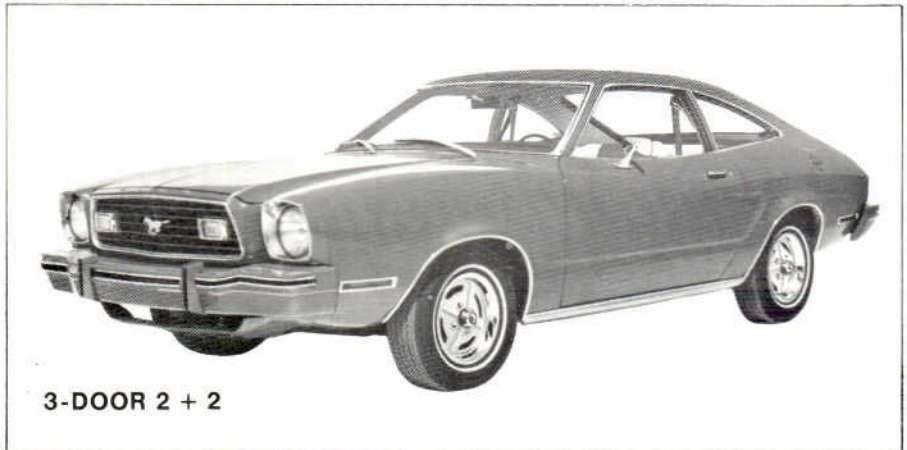
**HARDTOP**



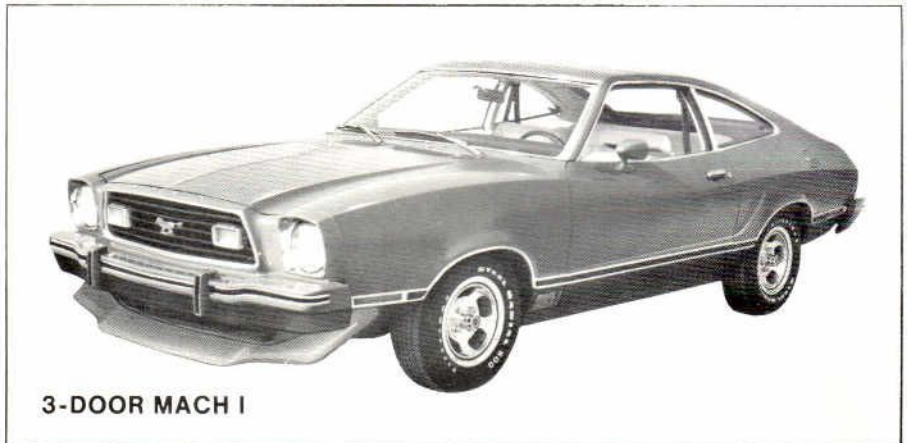
**2-DOOR GHIA**

## THREE-DOOR MODELS

	Sales Code	Body Code
2 + 2	03	69F
Mach I	05	69R



**3-DOOR 2 + 2**

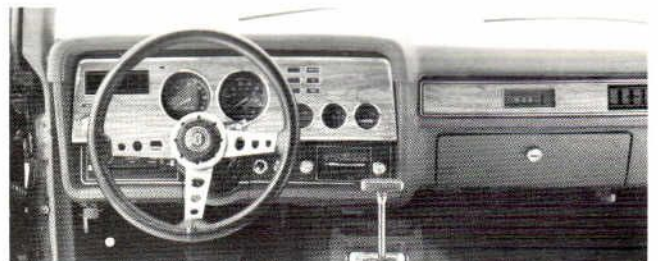


**3-DOOR MACH I**





# MUSTANG II HARDTOP — MAJOR STANDARD FEATURES



Shown with optional leather-wrapped sports steering wheel

## MODEL

2-DOOR HARDTOP

## EXTERIOR

- Color-keyed front and rear urethane-coated bumpers with black rubber inserts and white accent stripes
- Large 3-pod taillights with tri-color lens
- Bright trim moldings on windshield, backlite and quarter panel
- Bright drip rail, door belt and wheelip moldings
- Chrome outside mirror, left side
- Stainless steel wheel covers

## INTERIOR

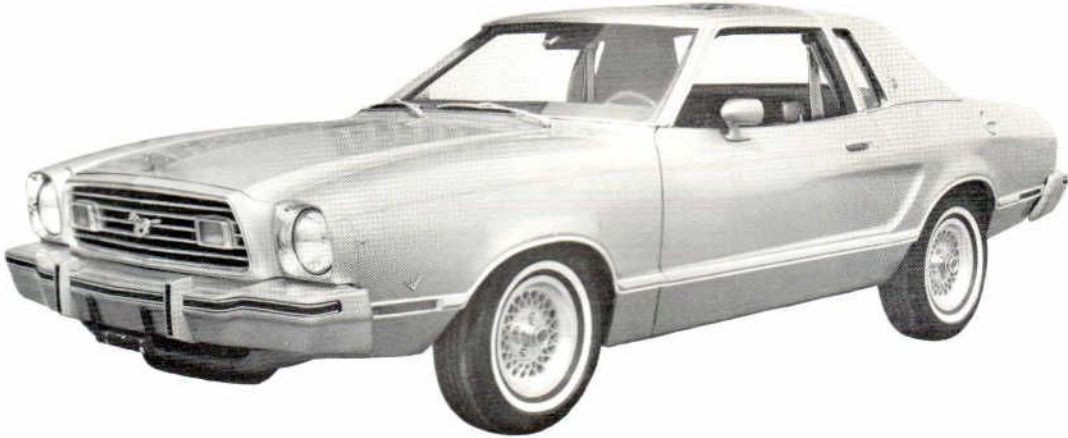
- Low back, all-vinyl bucket seats with deep-coved seat-backs
- Color-keyed 10-oz. cut-pile carpeting front and rear
- Color-keyed door trim panels with Mustang II ornament
- Tachometer, ammeter and temperature gauges
- Color-keyed instrument panel with pecan woodtone applique
- Color-keyed 2-spoke steering wheel
- Headlining color-keyed in soft vinyl
- Lockable glove box

## FUNCTIONAL

- 2.3 litre 2V OHC 4-cylinder engine
- Floor-mounted 4-speed manual transmission with wood-tone shift knob
- Dura-Spark solid-state ignition
- Manual front disc/rear drum brakes
- Rack-and-pinion steering
- Rear suspension includes rear stabilizer bar, staggered shocks and multiple leaf springs
- 3-speed heater/defroster



# MUSTANG II GHIA — MAJOR STANDARD FEATURES



## MODEL

2-DOOR GHIA

## EXTERIOR

The luxurious Ghia shares many exterior features with the 2-door hardtop. Among these are:

- Color-keyed front and rear urethane-coated bumpers with black rubber inserts and white accent stripes
- Large 3-pod design taillamps with tri-color lens
- Bright accent moldings
- Chrome left-hand outside mirror

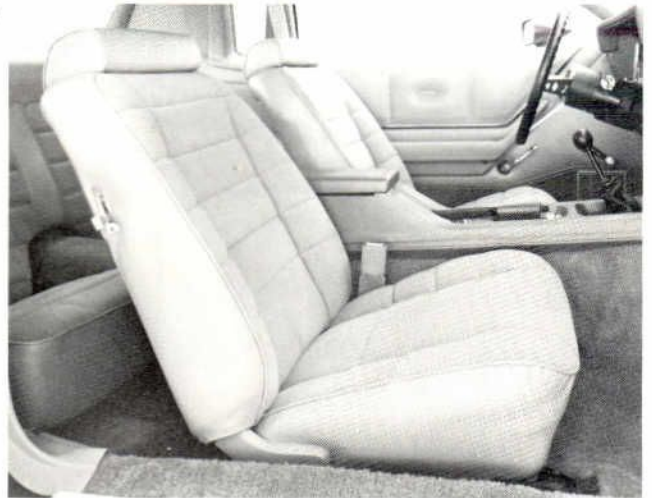
The Ghia offers the following exterior features in addition to or in place of those found on the 2-door hardtop:

- Distinctively shaped opera windows
- Vinyl roof in half roof design with bright cross roof molding
- Pin stripe treatment on hood, bodyside and back panel
- Wide, color-keyed, vinyl insert bodyside molding
- Deluxe simulated spoke wheel covers

## INTERIOR

In addition to or in place of interior features shared with the 2-door hardtop, the Ghia offers the following as standard:

- Luxury-level bucket seats with choice of cloth and vinyl or all-vinyl trim
- Deluxe color-keyed seat and shoulder belts
- Deluxe color-keyed door trim panels with large armrests, woodtone applique and carpeting on lower door (except when white trim is installed)



Shown with optional leather-wrapped sports steering wheel

- Color-keyed cut-pile 18-oz. carpeting in passenger compartment
- Grey cut-pile carpeting on floor of luggage compartment

## FUNCTIONAL

In addition to all the basic features shared with the 2-door hardtop, the Ghia offers:

- Steel-belted radial ply tires

# MUSTANG II 2 + 2 — MAJOR STANDARD FEATURES



## MODEL

3-DOOR 2 + 2

## EXTERIOR

The 3-door 2 + 2 model shares many exterior features with the 2-door hardtop. Mutual features include:

- Color-keyed front and rear urethane-coated bumpers with black rubber inserts and white accent stripes
- Large 3-pod taillights with tri-color lens
- Bright trim moldings on windshield, backlite and rear quarter panel
- Bright drip rail, door belt and wheelip moldings

Additional features include:

- Rear-operating third door . . . lift-up type with gas cylinder hold-open design and large fixed backlite
- WSW or B/RWL tires
- Four styled steel wheels
- Blacked out grille

## INTERIOR

The 3-door 2 + 2 model shares many interior features with the 2-door hardtop. Mutual features include:

- Low back, all-vinyl bucket seats, deep-coved seat-backs
- Color-keyed 10-oz. cut-pile carpeting front and rear
- Soft, color-keyed door trim panels with Mustang II ornament
- Tachometer, ammeter, temperature gauges
- Headlining color-keyed in soft vinyl
- Lockable glove box

Additional features include:

- Fold-down rear seat for added cargo-carrying capacity
- 10-oz. color-keyed carpeting on rear seat-back and rear load floor
- Sports steering wheel (non leather-wrapped)
- Brushed aluminum appliques on instrument panel



## FUNCTIONAL

The 2 + 2 shares the following functional features with the 2-door hardtop:

- 2.3 litre 2V OHC 4-cylinder engine
- Floor-mounted 4-speed manual transmission with wood-tone shift knob
- Dura-Spark solid-state ignition
- Manual front disc/rear drum brakes
- Rack-and-pinion steering
- Isolated sub frame
- 3-speed heater/defroster
- Rear suspension includes rear stabilizer bar, staggered shocks and multiple leaf springs



# MUSTANG II MACH I — MAJOR STANDARD FEATURES



## MODEL

3-DOOR MACH I

## EXTERIOR

The Mach I model shares a number of basic exterior features with the 3-door 2 + 2 model. Mutual features include:

- Color-keyed front and rear urethane-coated bumpers with black rubber inserts and white accent stripes
- Large 3-pod taillights with tri-color lens
- Bright trim moldings on windshield, backlite, drip rail, door belt, "B" pillar and wheelip
- Four styled steel wheels
- Blacked out grille

Additional exterior features include:

- Dual color-keyed mirrors with right- and left-hand remote control
- Black paint on lower bodyside, lower back, lower bumpers and between taillights
- Accent tape on lower back
- Mach I decal on lower front fenders . . . driver and passenger side
- Four bright trim rings



## INTERIOR

The Mach I model shares all the interior features of the 3-door 2 + 2 model. Features include:

- Low back, all-vinyl bucket seats, deep-coved seat-backs
- Color-keyed 10-oz. cut-pile carpeting front and rear
- Color-keyed door trim panels with Mustang II ornament
- Tachometer, ammeter and temperature gauges
- Sports steering wheel (non leather-wrapped)
- Brushed aluminum applique on instrument panel
- Headlining color-keyed in soft vinyl



- Lockable glove box
- Fold-down rear seat for added cargo capacity
- Color-keyed carpeting on rear seat-back and rear load floor

## FUNCTIONAL

In addition to all the basic functional features shared by the 3-door 2 + 2 model, the Mach I offers the following:

- 2.8 litre V-6 engine
- BR70 x B/RWL steel-belted radial ply tires



# MUSTANG II — STANDARD EQUIPMENT SUMMARY

In addition to the standard features listed, Mustang II includes, as standard equipment, the Ford Lifeguard Design Safety Features listed in the General Information Section.

EXTERIOR	2-Door Hardtop	2-Door Ghia	3-Door 2 + 2	3-Door Mach I
<b>BUMPERS:</b> Color-keyed urethane front and rear with black rubber inserts, white accent stripes	X	X	X	X
<b>GRILLE:</b> Bright argent horizontal design	X	X	—	—
Blacked out grille	—	—	X	X
<b>HOOD:</b> Hatch-type with inside hood release, prop rod hold-up	X	X	X	X
<b>LIGHTS:</b> Single headlamp	X	X	X	X
Parking/turn signal in grille	X	X	X	X
Side marker, front and rear	X	X	X	X
Taillamps, tri-colored (taillamp, turn and backup)	X	X	X	X
<b>MIRROR:</b> Bright outside, left-hand	X	X	X	—
Dual color-keyed with left-and right-hand remote-control	—	—	—	X
<b>MOLDINGS:</b> Bright grille surround	X	X	X	X
Bright windshield, backlite, drip rail, rear quarter, door belt	X	X	X	X
Bright "B" pillar	X	—	X	X
Bright roof	—	X	—	—
Bright wheelip	X	X	X	X
Bright lower bodyside, paint break	—	—	—	X
Wide color-keyed vinyl insert bodyside	—	X	—	—
<b>ORNAMENTATION:</b> Mustang ornament in grille	X	X	X	X
MUSTANG II emblem on decklid/liftgate	X	X	X	X
Bright FORD letters on grille opening panel and lower back panel	X	X	X	X
Black paint on lower bodyside, lower back, lower bumpers and between taillamps	—	—	—	X
Accent tape on lower back	—	—	—	X
Mach I decal on front fenders	—	—	—	X
Pin stripes on hood, bodyside and back panel	—	X	—	—
Ghia ornament on rear pillar	—	X	—	—
<b>OPERA WINDOWS:</b>	—	X	—	—
<b>VINYL ROOF:</b> Half roof design plus "B" pillar insert	—	X	—	—
<b>WHEELS:</b> Styled steel (trim rings standard on Mach I)	—	—	X	X
<b>WHEEL COVERS:</b> Bright stainless steel	X	—	—	—
Deluxe with simulated spokes	—	X	—	—

## INTERIOR

<b>ARMRESTS:</b> Front door, integral door pull handle	X	X	X	X
Rear, quarter panel	X	X	X	X
<b>ASHTRAY:</b> Front, instrument panel	X	X	X	X
Rear, in deluxe parking brake boot	—	X	—	—
<b>CARPET:</b> 10-oz. color-keyed cut-pile in passenger compartment	X	—	X	X
18-oz. color-keyed cut-pile in passenger compartment	—	X	—	—
10-oz. color-keyed cut-pile on rear seat-back and load floor	—	—	X	X
<b>CIGAR LIGHTER:</b> Front, in instrument panel ashtray	X	X	X	X
<b>DOOR TRIM PANEL:</b> All-vinyl with Mustang II ornament	X	—	X	X
Large armrests, woodtone applique and lower	—	—	—	—
10-oz. color-keyed cut-pile carpeting	—	X	—	—
<b>GLOVE BOX:</b> Lockable, twist opening	X	X	X	X
<b>HEADLINING:</b> Color-keyed vinyl	X	X	X	X
<b>INSTRUMENT PANEL:</b> Color-keyed with full-width	—	—	—	—
Pecan woodtone applique	X	X	—	—
Brushed aluminum applique	—	—	X	X
<b>INSTRUMENTATION:</b> tachometer, ammeter gauge	—	—	—	—
and temperature gauge	X	X	X	X
<b>LIGHTS:</b> Courtesy dome front door switches	X	X	X	X
<b>LUGGAGE COMPARTMENT:</b> Vinyl-coated fiber mat	X	—	—	—
Grey carpeting on floor and side panels	—	X	—	—
<b>MIRROR:</b> Rearview, double-jointed mounting bracket	X	X	X	X
<b>SEATS:</b> Low back buckets with coved seat-backs	—	—	—	—
and adjustable head restraints	X	X	X	X
Fold-down rear	—	—	X	X
<b>SEAT BELTS:</b> Front, continuous loop, retractor in rear	—	—	—	—
quarter panel, rotating boot on sill	X	X	X	X
Rear, lap belts with retractors	X	X	X	X
Color-keyed deluxe	—	X	—	—
<b>SEAT TRIM:</b> All-vinyl	X	—	X	X
Choice of all-vinyl or cloth and vinyl	—	X	—	—
<b>STEERING WHEEL:</b> Color-keyed, 2-spoke	X	X	—	—
Sport, black non leather-wrapped	—	—	X	X

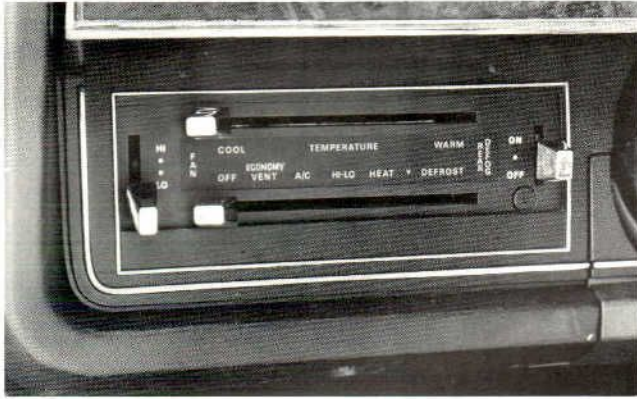
## FUNCTIONAL

<b>ALTERNATOR:</b> 40 ampere	X	X	X	X
<b>BATTERY:</b> 45 ampere-hour (36 amp.-hr. in California)	X	X	X	X
<b>BRAKES:</b> Manual front disc/rear drum	X	X	X	X
<b>ENGINES:</b> 2.3 litre 4-cylinder	X	X	X	—
2.8 litre V-6	—	—	—	X
<b>FUEL TANK:</b> 13 gallons	X	X	X	X
<b>HEATER/DEFROSTER:</b> Blend-air type, 3-speed blower	X	X	X	X
<b>HOOD RELEASE, INSIDE:</b>	X	X	X	X
<b>HORN:</b> Single note	X	X	X	X
<b>PARKING BRAKE:</b> Tunnel-mounted with warning light	X	X	X	X
<b>SOLID-STATE IGNITION:</b> Dura-Spark	X	X	X	X
<b>STEERING:</b> Manual rack-and-pinion	X	X	X	X
<b>SUSPENSION:</b> Front, rubber isolated with subframe	X	X	X	X
Rear-staggered shocks, multiple leaf springs and stabilizer bar	X	X	X	X
<b>TIRES:</b> Steel-belted radial ply	—	X	—	X
Bias ply	X	—	X	—
<b>TRANSMISSION:</b> 4-speed manual, floor-mounted shifter	X	X	X	X
<b>VENTILATION:</b> Direct Aire with high and low levels	X	X	X	X
<b>WINDSHIELD WIPERS:</b> 2-speed electric with turn signal wiper/washer control	X	X	X	X



# MUSTANG II — SELECTED OPTION DESCRIPTIONS

Mustang II offers a wide selection of factory-installed options, some of which are described here in detail. A complete optional equipment summary for Mustang II models is listed on page 15 of this section.



## SELECTAIRE AIR CONDITIONING

Mustang II's air conditioning system incorporates a large-size condenser, combination expansion valve and suction throttling valve and evaporator designed to provide a fast cool-down rate for improved passenger comfort. When the air conditioner is in operation, the suction throttling valve allows the compressor to run continuously while in the A/C mode and, therefore, the evaporator which cools the incoming air provides consistently low temperatures.

Four registers on the instrument panel are positioned to ensure more complete circulation. The top control lever selects the desired air temperature, and the bottom control lever can be placed in six positions: OFF, ECONOMY/VENT, A/C, HI-LO, HEAT AND DEFROST.

A separate fan switch is used to select one of four fan speeds. The A/C position cools and recirculates the air within the car, providing maximum cooling. The ECONOMY/VENT position draws a supply of fresh air in from the cowl intake and is the position most used after initially cooling the car with A/C. In this position the air compressor does not run, and does not drain power from the engine for cooling. Therefore, use of the ECONOMY/VENT position can result in improved fuel economy over use of the A/C position. Air flow is directed into the passenger compartment through the adjustable air registers. Adjustable louvers in each register control the flow of air and may be closed to shut off the flow of air.

## ELECTRIC REAR WINDOW DEFROSTER

Optional on all Mustang II's, the heated backlite quickly defogs the glass and melts ice and snow. The heating unit consists of a silver-filled ceramic, high-resistance printed electrical circuit, silk-screened onto the inside of the backlite. While visible as a series of 1/32 inch wide, horizontal lines across the backlite, the unit does not interfere with the driver's rear vision due to the wide spacing between the lines.

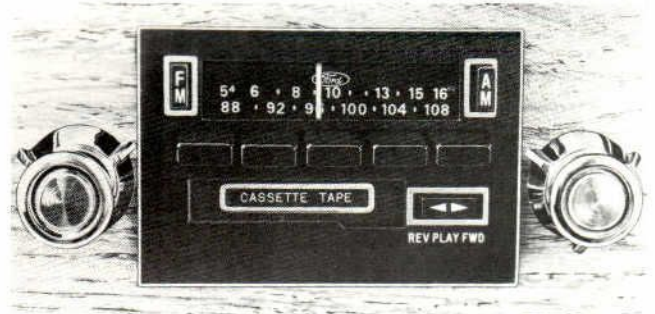
A switch for operating the unit is integral with the heater controls on the instrument panel. The option includes a "reminder" light which indicates when the unit is "on." A heavy-duty, high-output alternator is also included.



## FLIP-UP OPEN AIR ROOF

This convenient option is available on 2-door Mustang II models, with or without a vinyl roof. The roof is made of tinted glass and includes a privacy shade. The panel can function as a moonroof, flip open for added circulation, or can be completely removed.

The roof flips open very easily by means of a toggle latch (similar to flipper windows). When opened, the latch is pushed up to hold the rear of the roof in position. The roof can also be completely removed for the open-air feeling of a convertible. When removed, the glass panel and sun shade can be stored in a durable vinyl storage bag that is provided for extra protection against dirt and scratching.



## ▲ AM/FM STEREO RADIO WITH CASSETTE TAPE

This new entertainment option features a choice of AM, FM, FM Stereo or cassette tape. Two front door-mounted speakers provide true stereo reproduction and excellent sound, clarity and tonal range.

When the cassette tape is inserted, with the tape to the right, the radio automatically shuts off. The controls for fast forward and rewind allow the driver to make an easy selection of any portion of the tape. The driver can eject the cassette tape by merely pressing the volume control knob on the radio.

Controls are provided for manual tuning, volume, tone and push-button radio selection.

Additional sound systems available for Mustang II models include an AM, AM/FM Monaural, AM Radio with Tape Player, AM/FM Stereo and AM/FM Stereo with Tape Player.

## ▲ New for 1978



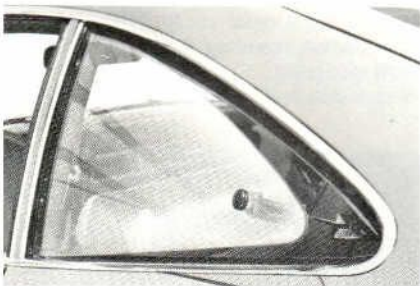
# MUSTANG II — SELECTED OPTION DESCRIPTIONS



## LUXURY INTERIOR GROUP

This option adds an extra touch to Mustang II. Standard with the Ghia, the package includes luxury level seats in a choice of all-vinyl or cloth and vinyl trim. Also included are deluxe door trim panels with woodtone accents, carpeting on the lower portion and large comfortable armrests, color-keyed deluxe seat belts, woodtone shift knob and bezel with automatic transmission, 18-oz. cut-pile carpeting and a large parking brake cover with rear-seat ashtray. When ordered on the 2-door hardtop, 12-ounce, grey luggage compartment carpeting is also included.

## CONVENIENCE GROUP



Included for all models are an inside day/night mirror, passenger-side visor vanity mirror, and interval windshield wipers.

These wipers can be adjusted to wipe at intervals of from two to fifteen seconds and can help reduce smearing during light rain or mist.

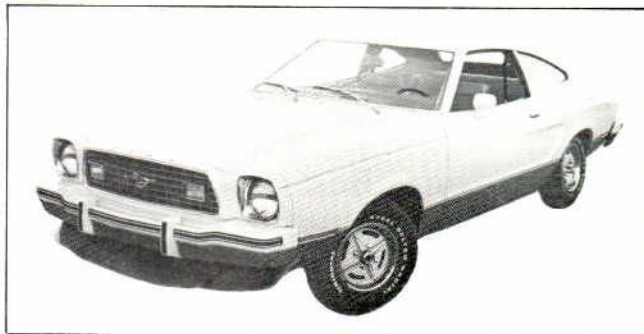
Flip-open rear quarter windows are included in this option group for the 2 + 2 and Mach 1 models. These windows are held in an open/closed position by a toggle latch. This design provides excellent flow-through ventilation. The flip-open quarter windows are not included when this option group is ordered with the "T" Roof Convertible Option.

## LIGHT GROUP

Available with all Mustang II models, the Light Group includes engine compartment light, glove box, ashtray and left- and right-hand instrument panel courtesy lights. Also included are a luggage compartment light (hardtop and Ghia), third door courtesy light switch (3-door models), door ajar warning light, integral map lamp (NA with optional flip-up open air roof and "T" roof convertible) and "lights on" warning light and buzzer.

## WIDE VINYL INSERT BODYSIDE MOLDING

Attractive yet functional, the optional vinyl insert bodyside molding enhances Mustang II's styling and protects against parking lot nicks and dents. When ordered on the hardtop and 2 + 2 models, the vinyl insert is color-keyed. On the Mach 1, the vinyl is black. Wide color-keyed bodyside moldings are standard on the Ghia.



## APPEARANCE DECOR GROUP

This option group adds a sporty look to the 2-door hardtop and 2 + 2 model. Included is lower two-tone paint treatment, which accents the main body color, plus dual accent bodyside tape stripes. Also included are four styled steel wheels with bright trim rings. In the interior is a choice of all-vinyl or cloth and vinyl seat trim and a brushed aluminum instrument panel applique around the instrument cluster and on the right-hand panel.

This option is not available on the Ghia or Mach 1 models.

## 4-WAY ADJUSTABLE BUCKET SEAT (DRIVER ONLY)

This optional seat allows 4-way manual adjustment for the driver's seat. By moving the adjustment levers located under the seat, the driver can manually adjust the seat both back-and-forth and up-and-down.

This adjustment feature can help the driver find the most comfortable driving position and provide added driving comfort, especially on long trips.

## EXTERIOR ACCENT GROUP

Available on the hardtop and 2 + 2 models, this attractive option includes wide color-keyed bodyside moldings, pin stripe treatment on hood, bodyside and rear panels. WSW tires, dual color-keyed mirrors with right- and left-hand remote control and styled steel wheels with bright trim rings.



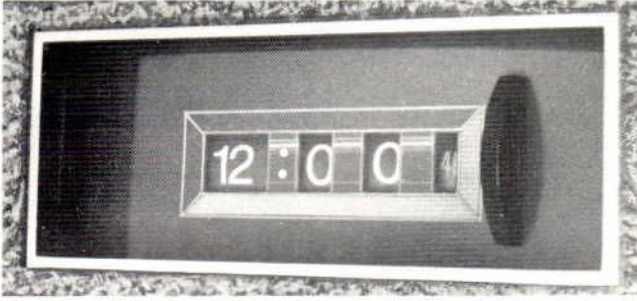
## ▲ FASHION ACCESSORY PACKAGE

This new option group is designed for both comfort and convenience. Included is an illuminated entry system that lights up the outside door lock and the vehicle interior when the door handle is pulled up. The interior features a four-way manual driver's seat, unique cloth and vinyl seat trim in a choice of four colors, a driver's side illuminated visor vanity mirror, convenient storage pockets in the door trim panels, a large parking brake boot with a coin tray and a rear seat ashtray.

Also included are bodyside pin stripes and the Appearance Protection Group, including bright license plate frames, floor mats with carpet inserts and bright door edge guards.



# MUSTANG II — SELECTED OPTION DESCRIPTIONS



## QUARTZ CRYSTAL DIGITAL CLOCK

The accurate quartz crystal digital clock is optional on all models. Located in the center of the right-hand instrument panel for easy viewing, the clock has large Arabic numerals on four rotating drums. Readout is in hours, minutes and seconds.

## VINYL ROOF

The optional full vinyl roof is available on the 2-door hardtop. Available colors include black, red, aqua, silver, midnight blue, chamois and white. See the color and trim charts on page 4 for compatibility.

A half vinyl roof is standard and available only on the Ghia models.

## RALLYE PACKAGE

Designed for performance-minded drivers, this option package is available on all models. The optional 2.8 litre V-6 or 5.0L (302 CID) V-8 engine is required. Included are adjustable shock absorbers, heavy-duty springs, extra cooling package and dual color-keyed remote-control mirrors. The 2.8 litre engine and dual color-keyed mirrors are standard on the Mach 1.



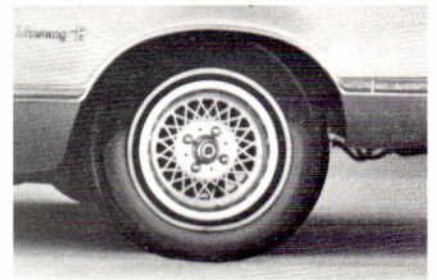
## LEATHER-WRAPPED SPORT STEERING WHEEL

This thick-rimmed steering wheel, featuring a fine glove soft leather covering, is available on all models and included with the Ghia Sports Group.



## WIRE WHEEL COVERS

These simulated wire wheel covers are available on all Mustang II models. Their classic design adds an extra touch of glamour to Mustang II's styling. Four wheel covers are included.



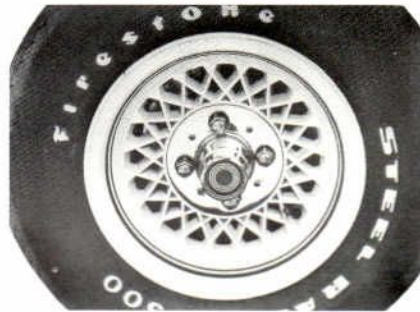
## CAST ALUMINUM SPOKE WHEELS

Available on all models, these wheels are lighter, and the important finish dimensions are machined, resulting in a more accurate wheel designed to run truer. Four wheels are included in this option.



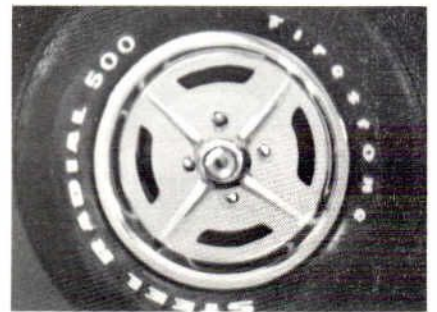
## FORGED ALUMINUM WHEELS

These "action-styled" wheels are available on all Mustang II's. Machine finishing results in a more accurate wheel designed to run truer. Four wheels are included in this option.



## PAINTED CAST ALUMINUM SPOKE WHEELS

These lightweight cast wheels feature a fine white paint treatment and are accented with dual red rings. Four wheels are included in this option.



## STYLED STEEL WHEELS WITH TRIM RINGS

These sporty wheels are standard on the 2 + 2 and Mach 1, and are included with the Cobra II and Exterior Accent Group and Appearance Decor Group options. Bright trim rings are included with the four wheels and are optional on the 2 + 2 model.

## ▲ WHITE PAINTED FORGED ALUMINUM WHEELS

These new aluminum wheels have a white paint treatment and are highlighted with a red painted ring. Four wheels are included in this option.

## ▲ New for 1978



# MUSTANG II — SELECTED OPTION DESCRIPTIONS



## GHIA SPORTS GROUP

This distinctive option group is available only on the Ghia Package contents include:

### EXTERIOR

- Choice of Black, Chamois or Dark Midnight Blue exterior paint
- Contrasting Black Odense or Chamois Lugano grain half-vinyl roof
- Black or Chamois vinyl insert bodyside molding color-keyed to the vinyl roof color
- Pin stripes in Black or Tan
- Cast aluminum spoke wheels with Chamois painted spokes
- Blackout grille



### INTERIOR

- All-vinyl Chamois or Black seat trim
- Console color-keyed to the interior
- Black "engine turn" appliques on the instrument panel, console tray and door trim panels
- Leather-wrapped sports steering wheel
- Black shift knob on models equipped with manual transmission
- Black parking brake handle



## "T"-ROOF CONVERTIBLE WITH REMOVABLE GLASS PANELS

Available on 2+2 and Mach I models, The "T"-roof convertible features two glass panels that are easily removed to provide that "open air" feeling. Also included is a wide-band accent molding that extends over the roof to the door belts (wide accent molding deleted when ordered with Cobra II option).



## RALLYE APPEARANCE PACKAGE

The Rallye Appearance Package is available only on the 2+2 model. Included are:

### EXTERIOR

- A choice of Black or White exterior paint
- Flat black treatment on: greenhouse moldings, wiper arms, grille (horse ornament deleted), plus black bezels for parking lamps, side marker lights and taillamps
- Black chromed door handles (including lock cylinders) and radio antenna
- Flat black dual racing mirrors
- Gold dual bodyside and hood tape stripes
- Gold grille and taillamp surround accent
- Gold paint accent stripes on black bumper inserts
- All-argent styled steel wheels and trim rings
- Delete bright wheelip moldings

Note: Black front spoiler available at no extra cost. Power brakes are required at extra cost.

### INTERIOR

- Sports steering wheel (non leather-wrapped)
- Cloth and vinyl bucket seats in black or white vinyl with gold cloth inserts and gold piping on the seats and headrests
- Black or white vinyl door trim panels with gold accents



# MUSTANG II — SELECTED OPTION DESCRIPTIONS



Available only on the 2+2 model, the revised sporty Cobra II Option includes:

## EXTERIOR

- A choice of black or white exterior paint colors
- Tri-color tape stripes on full bodyside, front spoiler, front bumper, hood, hood scoop, roof, decklid and rear spoiler
- Large "COBRA" block letters on bodyside and rear surface of decklid spoiler
- "II" block numbers integral with tape stripe on rear quarter panels
- Cobra decal on right side of decklid spoiler
- Flat black treatment on greenhouse moldings, wiper arms, door upper moldings, rocker panels
- Black grille with Cobra snake emblem
- Flat black dual remote racing mirrors
- Flat black louvers on quarter windows and backlite
- Pivoting quarter windows (NA when "T"-roof convertible is ordered)
- Rear opening hood scoop
- Styled steel wheels w/trim rings
- BR70 x 13 RWL tires

## INTERIOR

- Sport steering wheel (non leather-wrapped)
- Brushed aluminum applique on instrument cluster and right-hand panel

## FUNCTIONAL

- Rallye Package

## ▲ KING COBRA



The new King Cobra option is available only on the 2+2 model. Included in the King Cobra option:

## EXTERIOR

- Pin stripe treatment over the roof, front and rear greenhouse, decklid, wheelip and rocker panels, front pillar, belt area, side windows and around front air dam
- King Cobra tape treatment including snake treatment on hood
- "King Cobra" letters on doors and decklid spoiler
- "5.0L" nomenclature on hood scoop
- Rear quarter flair treatment
- Hood scoop
- Black grille
- Decklid spoiler
- Black treatment on greenhouse moldings, headlamp doors, wiper arms, parking lamps, side marker and taillamp bezels
- Black chromed door handles, lock cylinders and radio antenna (when optional radio is ordered)
- Color-keyed dual sport mirrors
- Lacy spoke aluminum wheels with bright treatment on wheels and spoke inners color-keyed to the tape color
- Bumper rub strip accent color-keyed to tape

## INTERIOR

- Sport steering wheel (non leather-wrapped)
- Brushed aluminum applique on instrument cluster and right-hand panel

## FUNCTIONAL

- 5.0 litre (302 CID) V-8 engine
- Power front disc brakes
- Power rack-and-pinion steering
- Rallye Package
- 195/70R RWL tires

▲ New for 1978



# MUSTANG II — OPTIONAL EQUIPMENT SUMMARY

REGULAR PRODUCTION OPTIONS	2-Door Hardtop	2-Door Ghia	3-Door 2+2	3-Door Mach 1
<b>ACCENT GROUP, EXTERIOR</b> — includes pinstripes, wide color-keyed vinyl insert bodyside moldings, WSW tires, dual sport mirrors and four styled steel wheels with trim rings. Not available with Cobra II, King Cobra, Rallye Appearance Package, Appearance Decor Group or special paint (DSO or PTO)	X	—	X	—
<b>AIR CONDITIONER — SELECTAIRE</b> — requires power front disc brakes at extra cost. Also, requires power steering at extra cost when ordered with 2.8 litre engine. Tinted glass — complete recommended	X	X	X	X
<b>APPEARANCE DECOR GROUP</b> — includes lower body two-tone paint treatment, pinstripes, four styled steel wheels with trim rings, all-vinyl or cloth and vinyl seat trim and brushed aluminum instrument panel appliques. Wheelip moldings are deleted. Not available with Cobra II Package, color-keyed vinyl insert bodyside moldings, exterior accent group, rocker panel moldings, metallic glow paint, Rallye Appearance Package, King Cobra Option or special paint (DSO or PTO)	X	—	X	—
<b>BELTS, COLOR-KEYED DELUXE</b> — standard on Ghia model and with luxury interior group	X	—	X	X
<b>BRACKET, FRONT LICENSE PLATE</b> — required in states issuing front license plate	X	X	X	X
<b>BRAKES, POWER FRONT DISC</b> — required at extra cost with 2.8 litre or 5.0 litre (302 CID) engine, Cobra II Package, Rallye Appearance Package, power steering, manually operated sunroof, air conditioner or front spoiler. Included with King Cobra	X	X	X	X
<b>BUMPER GUARDS, FRONT AND REAR</b>	X	X	X	X
<b>CLOCK, DIGITAL QUARTZ CRYSTAL</b>	X	X	X	X
<b>COBRA II PACKAGE</b> — see page 14 for a description of option contents. Not available with pinstripes, metallic glow paint, color-keyed vinyl insert bodyside moldings, rocker panel moldings, protection group, color-keyed dual sport mirrors, exterior accent group, rallye appearance package, cloth and vinyl bucket seats, King Cobra Option, Appearance Decor Group or styled steel wheels	—	—	X	—
<b>CONSOLE</b> — standard with Ghia Sports Group	X	X	X	X
<b>CONVENIENCE GROUP</b> — includes interval windshield wipers, passenger side visor vanity mirror, and inside day/night mirror. Three-door models include pivoting rear quarter windows, except with Cobra II Package and T-Roof Convertible Option	X	X	X	X
<b>DEFROSTER, ELECTRIC REAR WINDOW</b> — required in the state of New York on 2-door models	X	X	X	X
<b>EMISSION EQUIPMENT, CALIFORNIA</b> — required and only available in state of California	X	X	X	X
<b>ENGINE, 2.3 LITRE 2V 4-CYLINDER</b> — delete option. NA with automatic transmission	—	—	—	X
<b>ENGINE, 2.8 LITRE 2V 6-CYLINDER (2.8 LITRE WITH VARIABLE VENTURI CARBURETOR IN STATE OF CALIFORNIA)</b> — standard on Mach 1 model. Requires power front disc brakes and radial ply tires at extra cost	X	X	X	—
<b>ENGINE, 5.0 LITRE (302 CID) 2V 8-CYLINDER</b> — includes extended range fuel tank. Requires power front disc brakes, radial ply tires and power rack-and-pinion steering at extra cost. Included with King Cobra	X	X	X	X
<b>ENGINE, 5.0 LITRE (302 CID) 8-CYLINDER WITH VARIABLE VENTURI CARBURETOR</b> — includes extended range fuel tank. Requires Cruise-O-Matic transmission, California emission equipment, and radial ply tires, power front disc brakes and power rack-and-pinion steering at extra cost. Included with King Cobra	X	X	X	X
<b>FASHION ACCESSORY PACKAGE</b> — see page 11 for a description of option contents	X	—	—	—
<b>FRONT SPOILER</b> — No cost option. Standard with Cobra II Package. Not available with King Cobra Option. Requires power front disc brakes at extra cost	—	—	X	X
<b>Ghia SPORTS GROUP</b> — see page 13 for a description of option contents. Not available with any wheel cover or wheel option, trim rings, metallic glow paint, Wilshire cloth trim or special paint (DSO or PTO)	—	X	—	—
<b>KING COBRA OPTION</b> — see page 14 for a description of option contents. Not available with Cobra II Package, Rallye Appearance Package, pinstripes, rocker panel moldings, Protection Group, Exterior Accent Group, Appearance Decor Group, front spoiler and vinyl insert bodyside moldings	—	—	X	—
<b>LIGHT GROUP</b> — includes light under hood, glove box, ash tray, trunk (hardtop and Ghia), instrument panel courtesy, left-hand and right-hand, third door courtesy, light switch (3-door models), map light (deleted when ordered with manually operated sunroof or flip-up open air roof or T-Roof Convertible Option), door ajar warning light, headlights "on" warning light and buzzer	X	X	X	X
<b>LUXURY INTERIOR GROUP</b> — see page 11 for a description of option contents. Standard on Ghia. Not available with Rallye Appearance Package or Fashion Accessory Package	X	—	X	X
<b>MIRRORS, DUAL SPORT</b> — includes color-keyed remote-control mirrors. Standard on Mach 1 model, and with Rallye Package, King Cobra Option, exterior accent group, Cobra II Package (black), and Rallye Appearance Package (black). Not available with special paint (DSO or PTO)	X	X	X	—
<b>MOLDINGS, COLOR-KEYED VINYL INSERT BODYSIDE</b> — includes black vinyl insert only on Mach 1 model. Standard on Ghia model and with Exterior Accent Group. Not available with Cobra II Package, Appearance Decor Group, Rallye Appearance Package or King Cobra Option. Requires vinyl roof with special paint (DSO or PTO)	X	—	X	X
<b>MOLDINGS, ROCKER PANEL</b> — not available with Cobra II Package, Appearance Decor Group or King Cobra Option	X	X	X	X
<b>PAINT, METALLIC GLOW</b> — not available with Cobra II Package, Appearance Decor Group, Ghia Sports Group or Rallye Appearance Package	X	X	X	X
<b>PINSTripES</b> — includes dual accent stripes on hood, front fender, front door and rear quarter panel. Standard on Ghia model, and with Exterior Accent Group, Appearance Decor Group or Fashion Accessory Package. Not available on Mach 1 model, or with Cobra II Package, Rallye Appearance Package, or King Cobra Option	X	X	X	—
<b>PROTECTION GROUP</b> — includes door edge guards (except Mach 1 model), front floor mats and license plate frames (rear only when front license plate bracket is not ordered). Not available with Cobra II Package or King Cobra Option. Standard with Fashion Accessory Package	X	X	X	X

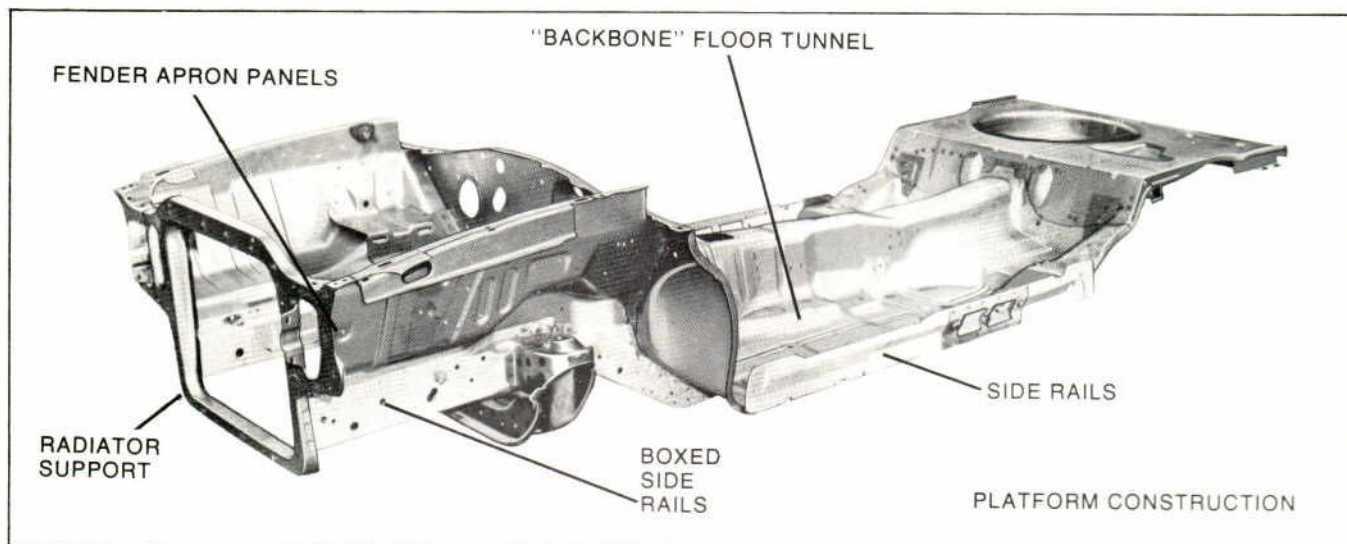


# MUSTANG II — OPTIONAL EQUIPMENT SUMMARY

REGULAR PRODUCTION OPTIONS	2-Door Hardtop	2-Door Ghia	3-Door 2+2	3-Door Mach 1
<b>RADIO, AM</b> .....	X	X	X	X
<b>RADIO, AM WITH STEREO TAPE PLAYER</b> — includes speaker in each side door .....	X	X	X	X
<b>RADIO, AM/FM MONAURAL</b> — includes single speaker in dashboard .....	X	X	X	X
<b>RADIO, AM/FM STEREO</b> — includes speaker in each side door .....	X	X	X	X
<b>RADIO, AM/FM STEREO WITH CASSETTE PLAYER</b> — includes speaker in each side door ..	X	X	X	X
<b>RADIO, AM/FM STEREO WITH TAPE PLAYER</b> — includes speaker in each side door .....	X	X	X	X
<b>RALLYE APPEARANCE PACKAGE</b> — see page 13 for a description of option contents. Not available with Cobra II Package, Appearance Decor Group, Luxury Interior Group, pinstripes, Exterior Accent Group, color-keyed bodyside moldings, left-hand sport mirror (LPO), cloth and vinyl bucket seats, or King Cobra Option .....	—	—	X	—
<b>RALLYE PACKAGE</b> — Standard with Cobra II and King Cobra. Includes extra cooling package, heavy-duty springs, adjustable shock absorbers, and dual sport mirrors (standard on Mach 1 model or with Cobra II Package, Exterior Accent Group or Rallye Appearance Package). Not available with special paint (DSO or PTO) .....	X	X	X	X
<b>ROOF, FULL-VINYL</b> .....	X	—	—	—
<b>ROOF, FLIP-UP OPEN AIR</b> .....	X	X	—	—
<b>SEAT, FOLD-DOWN REAR</b> — includes luggage compartment carpeting. Standard on 3-door models .....	X	X	—	—
<b>SEAT, FOUR-WAY MANUAL DRIVER'S</b> .....	X	X	X	X
<b>STEERING, POWER RACK-AND-PINION</b> — required at extra cost on models with 5.0 litre (302 CID) engine, or 2.8 litre engine in combination with air conditioner. Also requires power front disc brakes at extra cost. Included with King Cobra .....	X	X	X	X
<b>STEERING WHEEL, LEATHER-WRAPPED SPORT</b> — standard with Ghia Sports Group .....	X	X	X	X
<b>T-ROOF CONVERTIBLE OPTION</b> — Includes removable tinted twin glass panels and wide insert moldings (except Cobra II) from door beltline, over the roof, to door beltline, just rearward of the T-Roof opening .....	—	—	X	X
<b>TINTED GLASS, COMPLETE</b> — recommended with air conditioner .....	X	X	X	X
<b>TIRES, WSW</b> — bias ply. Delete option on Ghia with 2.3 litre engine .....	X	X	X	—
<b>TIRES, STEEL-BELTED RADIAL PLY</b> — BSW and WSW. BSW standard on Ghia and R/WL standard on Mach 1. Required with 2.8 and 5.0L engines .....	X	X	X	X
<b>TRANSMISSION, SELECTSHIFT CRUISE-O-MATIC</b> — not available on Mach 1 model with 2.3 litre engine. Required at extra cost with 5.0 litre (302 CID) 2V engine and high altitude emission equipment, or with 5.0 litre (302 CID) VV engine .....	X	X	X	X
<b>TRIM, WILSHIRE CLOTH</b> — not available with Ghia Sports Group .....	—	X	—	—
<b>TRIM RINGS</b> — standard on Mach 1 model, and with Cobra II Package, Exterior Accent Group, Appearance Decor Group and Rallye Appearance Package. Available only on 2+2 model. Not available with Ghia Sports Group .....	—	—	X	—
<b>WHEEL COVERS, WIRE</b> — not available with Ghia sports group .....	X	X	X	X
<b>WHEELS, FOUR FORGED ALUMINUM</b> — spare tire equipped with standard wheel. Not available with Ghia sports group .....	X	X	X	X
<b>WHEELS, FOUR LACY SPOKE ALUMINUM</b> — spare tire equipped with standard wheel. Not available with Ghia sports group .....	X	X	X	X
<b>WHEELS, FOUR WHITE LACY SPOKE ALUMINUM</b> — includes white painted wheel with dual red accent rings. Spare tire equipped with standard wheel. Not available with Ghia sports group .....	X	X	X	X
<b>WHEELS WITH TRIM RINGS, FOUR STYLED STEEL</b> — spare tire equipped with standard wheel. Standard on Mach 1 and 2+2 (less trim rings) models, and with Exterior Accent Group, Appearance Decor Group and Rallye Appearance Package. Not available with Ghia sports group .....	X	X	—	—
<b>WHEELS, FOUR WHITE PAINTED FORGED ALUMINUM</b> — spare tire equipped with standard wheel. Not available with Ghia sports group .....	X	X	X	X
<b>LIMITED PRODUCTION OPTIONS</b>				
<b>HEATER, ENGINE BLOCK IMMERSION</b> .....	X	X	X	X
<b>LIGHT, LUGGAGE COMPARTMENT</b> — standard with light group. Available only for fleet 2-door models .....	X	X	—	—
<b>MIRROR, INSIDE DAY/NIGHT</b> — standard with convenience group. Available only for fleet .....	X	X	X	X
<b>TINTED GLASS, WINDSHIELD</b> — available only for fleet .....	X	X	X	X
<b>MIRROR, LEFT-HAND COLOR-KEYED SPORT</b> — available only for fleet. Not available on Mach 1 model, or with Cobra II Package, Exterior Accent Group, Rallye Package, Rallye Appearance Package or special paint (DSO or PTO) .....	X	X	X	—



# MUSTANG II — CHASSIS FEATURES



## PLATFORM CONSTRUCTION

Mustang II's unit-built bodyside design incorporates a platform-type chassis which provides a structural base for the body, as well as an enclosure for the engine. The platform structure also provides a base for the sub frame and other underbody chassis component attachments. Features and benefits of the design:

- The boxed side rails and stiffening crossmembers are made of sheet steel and are welded to the floor pan to form a strong basic foundation for the body.
- The front and rear side rails are also welded to the floor pan. A "backbone" formed by the full-length tunnel gives the structure substantial rigidity.
- The fender apron panels in the engine compartment are welded to the front side rails at the bottom and to the dash and cowl at the rear for front-end rigidity.

## SUB FRAME

The Mustang II uses an isolated sub frame designed to help cushion front-end road disturbances while dampening power train vibrations. The sub frame, constructed of heavy-gauge pressed steel, is isolated from the body platform front structure by six rubber mountings. These rubber mountings cushion road disturbance from the front suspension and the driveline before it reaches the main structure. Major design features and benefits:

- The front suspension lower arm axial struts are mounted to the sub frame rather than directly to the body platform or

chassis frame, thus providing second-tier isolation from front suspension input loads.

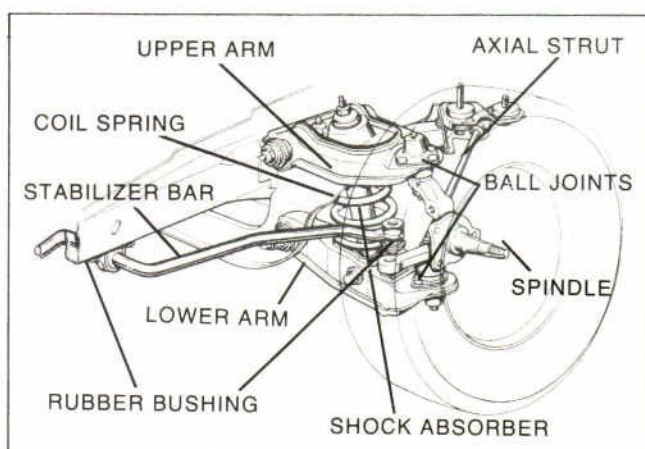
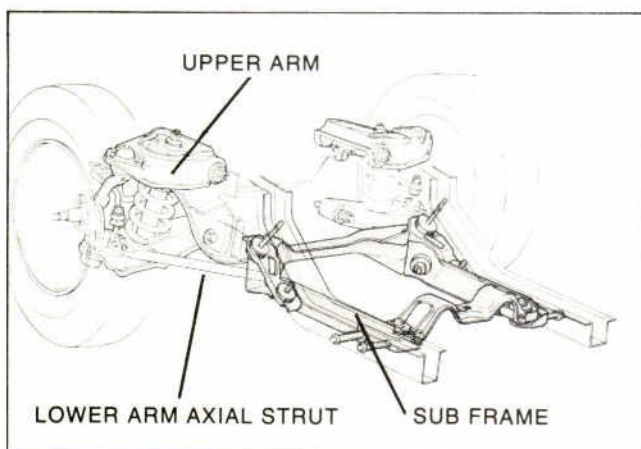
- The rear engine mount also attaches to the sub frame, thus dampening power train vibrations.

The use of a sub frame and the liberal use of rubber for isolation and insulation are largely responsible for giving the Mustang II a quiet, comfortable ride — a ride not usually expected in a car of Mustang II's size.

## FRONT SUSPENSION

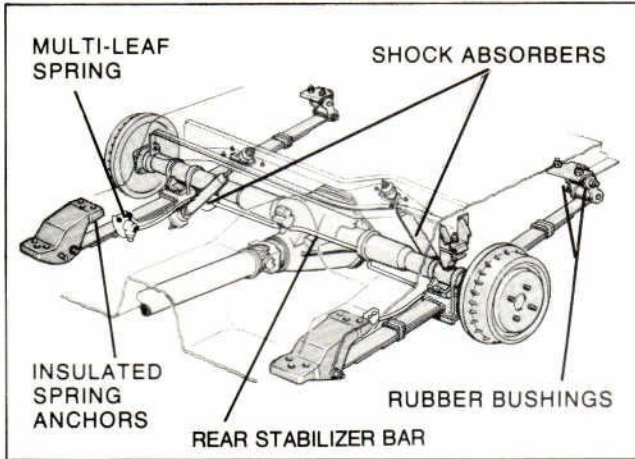
Mustang II uses a short- and long-arm type of independent front suspension, with suspension components isolated from the body platform structure by large rubber bushings. A link-type, rubber-bushed stabilizer bar — standard on all Mustang II's — connects the lower control arms to prevent excessive lean during cornering. Other design features and benefits:

- Coil springs are mounted on the lower arms. This design eliminates the need for high spring towers, providing more room in the engine compartment.
- Rubber-mounted struts, attached to the lower control arms and anchored to the isolated sub frame, allow the front wheels to recoil slightly to lessen road shock.
- Suspension geometry has been designed to minimize toe-in change during front wheel turning to prevent tire scuffing.
- Ball joints and tilted upper control arms combine to minimize "nose driving" that can occur upon sudden braking.





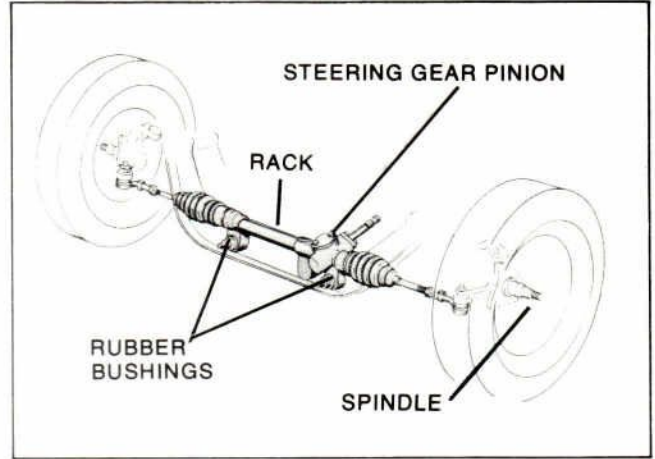
# MUSTANG II — CHASSIS FEATURES



## REAR SUSPENSION

Mustang II's Hotchkiss-type rear suspension (driving and braking forces are taken up by the leaf springs) features additional rubber insulation at rear axle, spring and body shackle points and at shock absorber mounting points. The liberal use of rubber eliminates metal-to-metal contact which minimizes noise transfer to the passenger compartment. Important rear suspension features:

- Long, 50 inch, multi-leaf, semi-elliptical springs soak up driving and braking forces to provide a comfortable cushioned ride.
- Spring mounting eyes incorporate extra-large resilient rubber bushings that permit slight rearward wheel movement to help reduce road shock and noise.
- Springs are completely wrapped in rubber at axle housing attachment points, minimizing noise transfer and contributing to "big-car" ride.
- Extra-large resilient rubber bushings in the shock absorber mounting eyes absorb minor road irregularities and help reduce rolling harshness.
- Rear shocks are positioned at an angle to minimize side sway.
- Rear shocks are staggered (the right is mounted in front of the axle; the left behind it) to help prevent wheel hop and improve traction during acceleration.
- A rear stabilizer bar has been added to help reduce lean when cornering.



## RACK-AND-PINION STEERING

Mustang II's rack-and-pinion steering provides precise steering response with minimum effort. In this system a pinion, mounted directly to the steering shaft, engages a linear-toothed section (the rack) of the center tie rod. This is a simple direct and low-friction system which eliminates the pitman arm, drag link and conventional gear box. Other design features and benefits:

- Universal joint at forward end of steering gear shaft permits shaft to deflect in the event of collision and minimizes transmittal of road vibrations to steering wheel.
- Steering rack housing is mounted on two rubber bushings to reduce road shock and noise.
- Tie rods are short and mounted directly to the spindle arms.

See page 23 of this section for steering specifications

## POWER RACK-AND-PINION STEERING

This type of steering system, used by many European high-performance luxury cars, combines the precise control of rack-and-pinion steering with the low effort of domestic systems. A variable ratio rack-and-pinion steering gear combined with an improved power assist pump is also incorporated in the steering system. This system further reduces the effort required during parking maneuvers, provides improved road "feel" at highway speeds and reduces the power demand on the engine. The system is required at extra cost when the 2.8L V-6 and air conditioning are ordered in combination and also with the 5.0L (302 CID) V-8 engine.

## FRONT DISC/REAR DRUM BRAKES

All Mustang II's are equipped with manual front disc/rear drum brakes. Disc brakes are designed to resist fade, help eliminate braking pulls and dissipate heat more effectively.

Power front disc/rear drum brakes are optional on all Mustang II models and are required at extra cost with the optional 2.8L 2V V-6 and 5.0L (302 CID) 2V V-8 engines and with the Cobra II option.

## MANUAL TRANSMISSION

A floor-mounted 4-speed manual transmission is standard with all Mustang II 4-cylinder or 6-cylinder engines. Design features and benefits include:

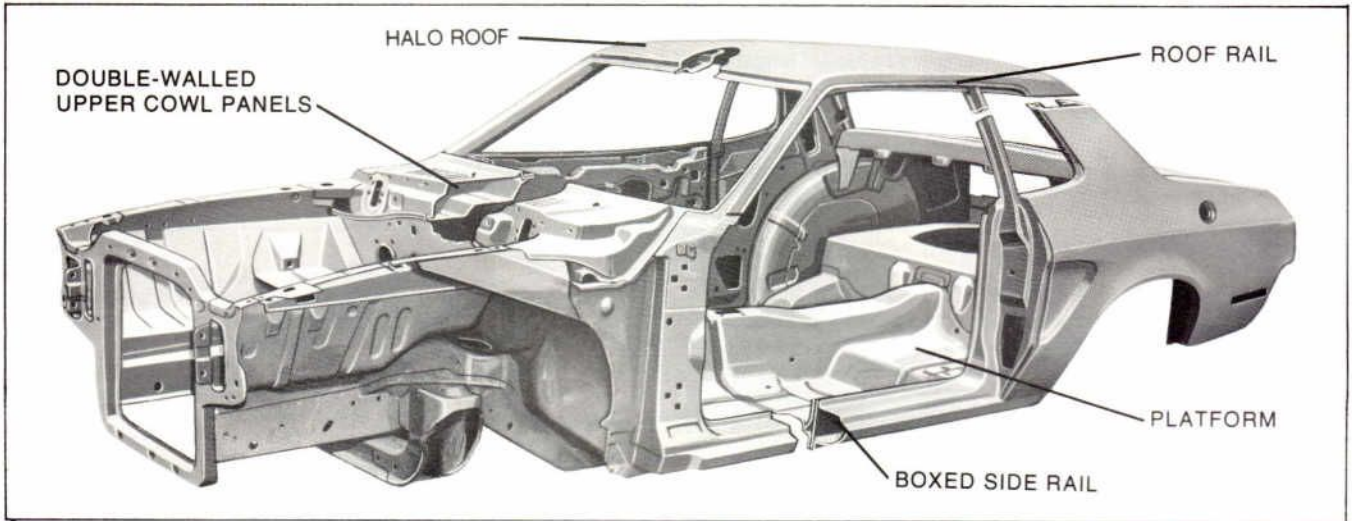
- A lightweight aluminum housing
- Optimum spacing between gear ratios for smooth, efficient performance
- A European-type, single-rail, enclosed shift mechanism for a more positive shift "feel"

A heavy-duty 4-speed manual transmission is included with the 5.0L (302 CID) engine if automatic transmission is not ordered.

SUSPENSION SPECIFICATIONS	
<b>FRONT</b>	
Type .....	Independent with Ball Joints
Springs .....	3.5" ID Coil
Shock Absorbers .....	Direct Acting, Integral Rebound Stop-and-Jounce Bumper
Steering Knuckle .....	Integral Spindle and Steering Arm
Wheel Bearings .....	Tapered Roller
<b>REAR</b>	
Type .....	Semi-Elliptical Springs
Number of Leaves .....	4
Leaf Length and Width .....	50" x 2.5"
Spring Shackles .....	Compression
Shock Absorbers .....	Direct Acting
Wheel Bearings .....	Single-Row, Double-Sealed Ball



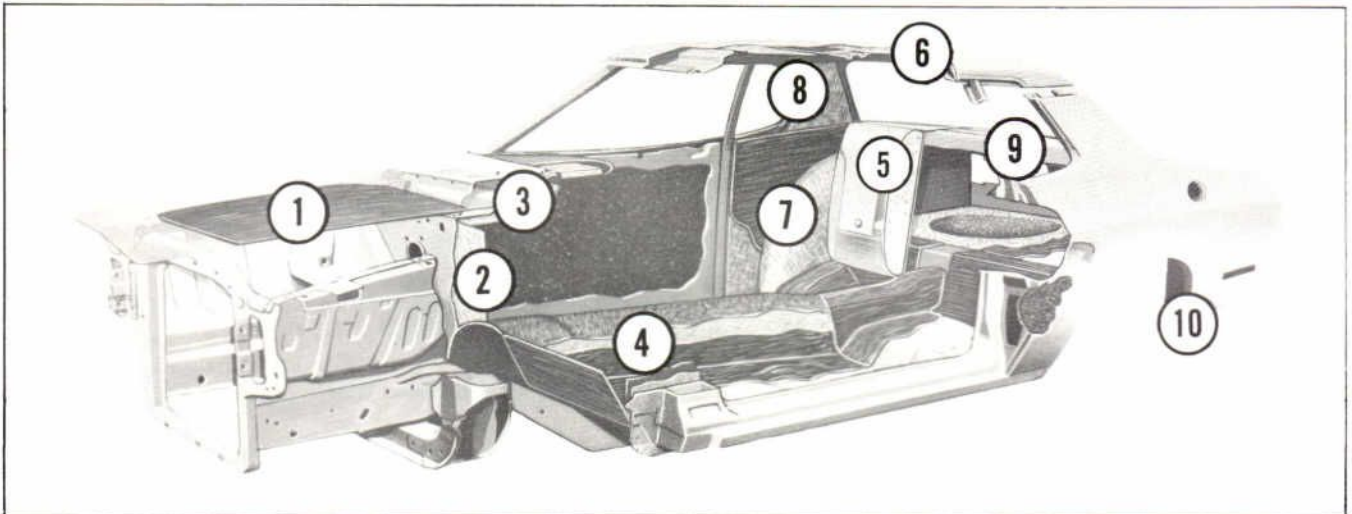
# MUSTANG II — BODY FEATURES



## BODY CONSTRUCTION

The integral all-welded construction of the Mustang II body platform provides strength with light weight. The body metal and structural members are welded solidly to the underbody to form a completely unitized construction. Some of the advantages and design features:

- The body structure is framed on the assembly line in precision welding fixtures resulting in a good alignment of doors, hood and decklid.
- Strong reinforcing members are used at roof pillars, roof and bodyside rails and around the windshield and rear window for added strength.
- The roof structure has separate windshield and rear window headers, inner roof rails and roof reinforcements.



## BODY INSULATION

The Mustang II incorporates some of the latest insulation techniques, such as heat-flow mastic floor deadener. The deadener is placed in the body just prior to painting and, in the process of going through the paint oven, is bonded to the floor pan forming a very effective sound barrier. In a number of applications, molded insulators are installed. Numerous other acoustical pads, sound insulators, and spray-on deadeners are used to reduce engine and road noise.

- (1) The hood has mastic and adhesive spotted between the inner and outer panels, and a glass fiber hood absorber is used on the underside of all models.
- (2) The dash panel has a one inch textile pad (146 gram) coated with .75 pound per sq. ft. plastisol.
- (3) The inner cowl top is covered with a 1/2 inch textile fiber-pad absorber. Cowl sides are insulated with the same type material.
- (4) Floor deadener—one pound per sq. ft. heat-bondable mastic covers floor pan from dash panel to kick-up in all models.

- (5) The rear-seat area or 2-door has a cotton/heat fused polyfilm absorber forming a barrier between luggage compartment and passengers.
- (6) Roofs are lined with .125 inch dry felt and .25 inch, 38 gram cotton laminate bonded to roof.
- (7) The rear quarter inner wheelhouse is lined with a .50 inch, 56 gram cotton absorber with a .50 pound per sq. ft. plastisol coating (forward of package tray only on 2-door models).
- (8) Roof "C" pillars are lined with .125 inch dry felt, .25 inch, 38 gram cotton laminate.
- (9) The underside of the 2-door package tray trim panel has a .50 inch, 56 gram cotton absorber. The 2-door has an additional 5/8 inch foam laminate seal between the seat-back and wheelhouse.
- (10) A spray-on vinyl sound deadener is applied to the underside of both rear wheelhouse panels.



# MUSTANG II — BODY FEATURES

## BODY SEALING MATERIAL

A heat-curing vinyl-sealing material is applied to the full length of all outer panel seams and joints to effectively seal out dust and moisture.

Windshields and rear windows are sealed with butyl rubber compound that retains its elasticity and keeps a tight seal without becoming brittle or cracking.

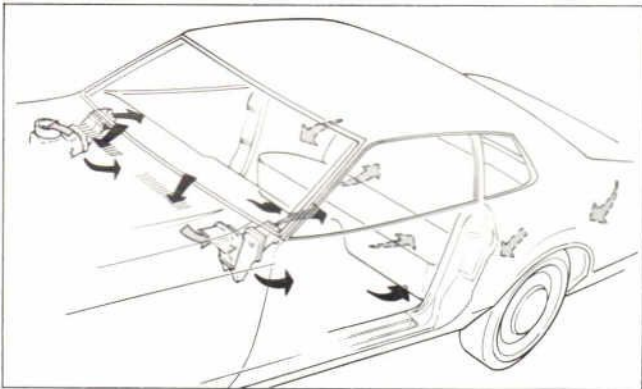
## HEATING SYSTEMS

Mustang II uses a high-capacity, "blend-air" type heater/defroster with a 3-speed blower. Passenger comfort is maintained by regulating the amount of outside air that flows through the heater core. Illuminated heat, temperature, defrost and blower controls are conveniently located within easy reach. The defrost lever directs air through slots at the top of the instrument panel to defog or defrost the windshield.

## DIRECTAIRE VENTILATION SYSTEM

Mustang II's high/low ventilation system provides fresh air flow through the vehicle with the windows rolled up — a convenience which helps eliminate wind and traffic noises.

Adjustable air valves located behind the registers at either end of the instrument panel control the direction of incoming air. The valves are operated by push-pull knobs located below the instrument panel.



- With knobs all the way in — air valves are closed.
- With knobs all the way out — air is directed upward toward driver and passenger.
- With knobs half way out — air flow is divided so that three-fourths of the flow is directed toward the floor, while the remainder is directed upward toward driver and passenger.

## URETHANE-COVERED BUMPERS

Color-keyed urethane-coated bumpers are standard on all Mustang II's. These bumpers are highlighted by black rubber inserts that feature white accent stripes.

See the General Information Section for additional details.

## DOOR CONSTRUCTION

Mustang II doors are formed into a sturdy box unit by using a double-panel, welded construction. Bronze-bushed hinges are oil-impregnated for long wear and easy opening and closing. The lower hinges are provided with assist springs to aid in opening the doors and to retard slamming when closing. The doors incorporate a check feature to hold the doors in the full open position and at an intermediate door-opening position.

"Bear hug" door latches provide secure closing, easy opening, rattle resistance and help prevent door opening in the event of a collision. Weatherstripping is mechanically retained by plastic retaining pins rather than by adhesive alone to maintain more positive door sealing against dirt and moisture. Keyless door locking and reversible keys for door and trunk locks are additional Mustang II convenience features.



## THIRD DOOR

Mustang II's 3-door models feature a lift-up rear door with narrow frames and a large glass area. Positive-acting gas cylinders hold the door in a near-vertical position for convenient loading and unloading. The door opening is a generous 25.8 inches in height and 47.5 inches in width. With the rear seat folded down front-to-back cargo space measures 58.6 inches.

## WINDOW CONSTRUCTION

Side and backlite windows on all Mustang II models are high-strength, impact-resistant, heat-tempered glass. The windshield is constructed of two sheets of glass which are sandwiched to a 30 mil thick plastic sheet and heat laminated together. This type of windshield construction provides strength and pliability, which enable the windshield to take "more stretch under impact," reducing injury-producing penetration.

Ventless front side glass is featured on all Mustang II's.

## HOOD CONSTRUCTION

Mustang II's hatch-type hood is held open by a conveniently located prop rod and can be opened a full 90° for added convenience in reaching components in the engine compartment.

Rubber bumpers provide cushioning against squeaks and rattles. The bumpers can be adjusted to level the hood with the front fenders and sheet metal over the grille. As an anti-theft measure, an inside hood release is standard on all Mustang II's.

The release handle is below the left side of the instrument panel. Pulling the handle partially opens the hood, which then permits access to an outside safety latch that must be released before the hood can be fully opened.



## MUSTANG II — BODY FEATURES



### LUGGAGE COMPARTMENT

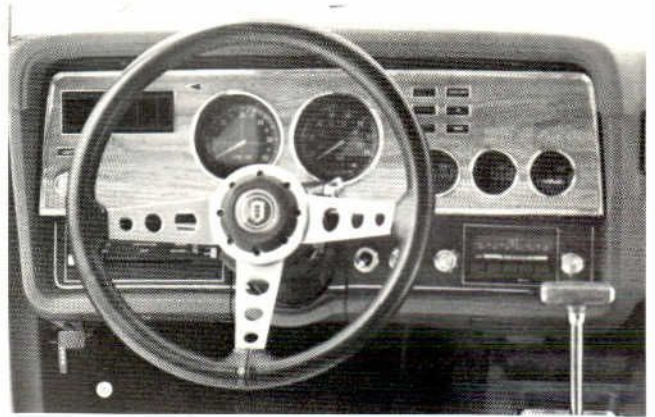
The interior of Mustang II's luggage compartment for the base 2-door hardtop and Ghia models includes body color paint on the quarter/wheelhouse panels and inside lower back panel. The floor of the luggage compartment is covered with a vinyl-coated fiber mat for the base 2-door model and with 12-oz. medium grey carpeting on the Ghia model. 12-oz. medium grey carpeting is also included with the Luxury Interior Group. Weatherstripping provides protection against dirt and moisture entering the luggage compartment. The spare tire and wheel are stored in a well in the floor.

### SEAT CONSTRUCTION

Mustang II bucket seats are low backed with adjustable head restraints. Horizontal zigzag springs frame the seating area and include extensions on either side for the side bolsters. The contour-molded seat pad features a steel-wire and cotton-net support pad molded into the foam. A dual-density foam, used for the one-piece molded cushion, provides softness in the center and firmer support at the sides.

The seats are attached to strong roller bearing tracks that have five inches of adjustment. Low-friction nylon slides on the seat tracks make adjustment easy.

Folding front seat-backs self-lock when in full upright position. A seat-back release handle, located near the top of the seat-back, releases the lock for rear seat entry.



### INSTRUMENT PANEL

The Mustang II instrument panel includes standard features normally available only as optional equipment. The cluster panel is pecan woodtone applique on the Hardtop and Ghia models and brushed aluminum applique on the 2 + 2 and Mach 1. Included as standard equipment: a tachometer, speedometer, ammeter, fuel gauge and temperature gauge. Also included are warning lights for oil pressure, restraint belts and brakes.

The headlight switch is located at the far left of the cluster panel, below the left ventilation register. The wiper/washer controls are located on the turn signal arm within easy access of the driver. Interval windshield wipers are available as part of the Convenience Group. The interval wipers reduce smearing and dry-wiping in periods of light rain, mist or car spray. They can be adjusted to wipe at intervals up to ten seconds.

A "camera black" lower panel, located below the cluster panel, contains heating/cooling controls.

The right-hand panel also features either pecan woodtone or brushed aluminum applique, depending on the model. A lockable glove box is located below.

## MUSTANG II — GENERAL SPECIFICATIONS

### BODY DIMENSIONS

	2-Door Hardtop/ Ghia	3-Door 2 + 2/ Mach I
All dimensions are in inches unless otherwise specified		
<b>GENERAL</b>		
Wheelbase .....	96.2	96.2
Tread — Front .....	55.6	55.6
— Rear .....	55.8	55.8
Height — Overall .....	50.3	50.0
Length — Overall .....	175.0	175.0
Width — Overall .....	70.2	70.2
<b>FRONT SEAT ROOM</b>		
Head Room effective .....	37.2/36.9	36.9
Shoulder Room .....	52.5/51.9	52.5
Hip Room .....	51.9/50.8	51.9
Maximum Leg Room to Accelerator .....	42.0/41.9	42.0



# MUSTANG II — GENERAL SPECIFICATIONS

## BODY DIMENSIONS

	2-Door Hardtop/ Ghia	3-Door 2 + 2/ Mach I
All dimensions are in inches unless otherwise specified		
<b>REAR SEAT ROOM</b>		
Head Room effective .....	35.9/35.7	34.1
Shoulder Room .....	49.1/50.2	48.7
Hip Room .....	40.4/40.0	40.4
Minimum Leg Room .....	24.6/24.5	24.6
<b>LUGGAGE COMPARTMENT</b>		
Usable Luggage Capacity (cu. ft.) .....	8.2	—
Liftover Height .....	31.8	31.8
<b>CARGO COMPARTMENT</b>		
Cargo Volume Index (cu. ft.) .....	—	22.8
Load Floor Length (closed rear door) .....	—	59.2
Rear Opening Height — floor to header .....	—	21.6
<b>FUEL TANK</b>		
Capacity (gal.) .....	13.0+	13.0+
<b>GLASS AREA</b>		
Side Glass Exposed Surface Area (sq. ft.) .....	7.7	8.5
Windshield Exposed Surface Area (sq. ft.) .....	8.2	8.2
Backlite Exposed Surface Area (sq. ft.) .....	5.4	7.9
Total Glass Exposed Surface Area (sq. ft.) .....	21.3	24.6
<b>CURB WEIGHT (pounds)*</b>		
2-Door Hardtop** .....	2715	
Ghia** .....	2746	
3-Door (2 + 2)** .....		2754
Mach 1** .....		2880

\* Weight of vehicle with oil, water and a full tank of gas

\*\* Above weights with 2.3 litre engine and 4-speed manual transmission except Mach 1. Mach 1 includes 2.8 litre and 4-speed transmission.  
+ 16.5 gal. with 5.0 litre (302 CID) engine

## POWER TEAM COMBINATIONS

### 49 STATES

Engine	TRANSMISSIONS		REAR AXLE RATIOS					
	4-Speed Manual	Cruise- O-Matic	4-Speed Manual			Cruise-O-Matic		
			Std.	Opt.	Traction- Lok	Std.	Opt.	Traction- Lok
2.3-Litre 4-Cyl. 2V STD.	Std.	Opt.	3.18	N.A.	N.A.	3.18(a)	N.A.	N.A.
2.8-Litre V-6 2V OPT.	Std.	Opt.	3.00	N.A.	N.A.	3.40	N.A.	N.A.
5.0 Litre (302 CID) 2V V-8 OPT.	Opt.(b)	Opt.	3.00	N.A.	N.A.	2.79	N.A.	N.A.

(a) N.A. on Mach I

(b) Heavy-duty transmission

### CALIFORNIA

2.3 Litre 4-Cyl. 2V STD.	Std.	Opt.	3.18	N.A.	N.A.	3.18	N.A.	N.A.
2.8 Litre V-6 VV OPT.	Std.	Opt.	3.00	N.A.	N.A.	3.40	N.A.	N.A.
5.0 Litre (302 CID) VV V-8 OPT.	N.A.	Opt.	N.A.	N.A.	N.A.	3.00	N.A.	N.A.



# MUSTANG II — GENERAL SPECIFICATIONS

## STANDARD TIRE AVAILABILITY

MODEL	2.3 Litre 4-Cyl. 2V	2.8 Litre 6-cyl. 2V	5.0 Litre (302 CID) 8-Cyl. 2V
Hardtop	B78 x 13 BSW	BR78 x 13 BSW*	195/70R x 13 WSW*
Ghia	BR78 x 13 BSW	BR78 x 13 BSW	195/70R x 13 WSW
2 + 2	B78 x 13 BSW (a)	BR78 x 13 BSW* (b)	195/70R x 13 WSW* (c)
Mach I	BR70 x 13 B/RWL	BR70 x 13 B/RWL	195/70R x 13 B/RWL

\* Required at extra cost.

(a) BR70 RWL Standard with Cobra II.

(b) 195/70R x 13 RWL with air conditioning on Cobra II.

(c) 195/70R x 13 RWL with Cobra II.

## OPTIONAL TIRE AVAILABILITY

STANDARD TIRE	B78 x 13 WSW	BR78 x 13 BSW	BR78 x 13 WSW	BR70 x 13 B/RWL	195/70R x 13 B/RWL	195/70R x 13 WSW	195/70R x 13 WWSW
B78 x 13 BSW (1)	X	X	X	X	X	X	X
BR78 x 13 BSW	— (1)	—	X	X	X	X	X
BR70 x 13 B/RWL	—	—	—	—	X	X	X
195/70R x 13 B/RWL	—	—	—	—	—	—	X
195/70R x 13 WSW	—	—	—	—	X	—	X

(1) Available as a delete option with Ghia with 2.3 litre engine.

NOTE: See the General Information Section for additional tire information.

## BRAKE SPECIFICATIONS

FRONT DISC/REAR DRUM	ALL MODELS
Front Disc Rotor Diameter	9.3"
Outer Working Surface Diameter	9.3"
Inner Working Surface Diameter	6.24"
Front Swept Area*	145.5 sq. in.
Rear Drum Diameter/Width	9" x 1.75"
Lining Material and Attachment	Molded Asbestos, Riveted
Rear Swept Area*	98.9 sq. in.
Total Front and Rear Swept Area*	244.4 sq. in.
Parking Brake (type)	Mechanical Application of Rear Brakes

\* Swept Area is the effective working surface.

## STEERING SPECIFICATIONS

Linkage .....	Rack-and-Pinion Type
Gear Type .....	Rack-and-Pinion
Overall Steering Ratio	
Manual .....	24.2:1
Variable Power .....	18.2:1 at center
	14.3:1 at stops
Steering Wheel Turns (Lock-to-Lock)	
Manual .....	4.2
Power .....	3.3
Turning Diameter (Curb-to-Curb)	
Manual .....	34.19'
Power .....	34.11'
Steering Wheel Diameter	15.0"

## WHEEL SPECIFICATIONS

Type .....	Stamped-Steel Disc
Number of Studs .....	4
Diameter and Rim Size .....	13" x 5"
Models with 195/70 R13	
or optional aluminum wheels .....	13" x 5.5"
Bolt Circle (all) .....	4.25"