

TORINO INDEX

1972 TORINO MODELS

Complete Model Line Up.....	2
TORINO.....	5
GRAN TORINO.....	6
GRAN TORINO SPORT.....	7
TORINO STATION WAGON.....	8-9
GRAN TORINO STATION WAGON.....	9
GRAN TORINO SQUIRE WAGON.....	10

BODY FEATURES

BODY CONSTRUCTION.....	15
BODY INSULATION.....	16
Body Sealing Material.....	17
BUMPER JACK SYSTEM.....	20
DOORS.....	18
DOOR HANDLES AND ARMRESTS.....	18
FUSE PANEL.....	20
GRILLE.....	17
Heating.....	20
Hood.....	17
INSTRUMENT PANEL.....	19
Lighting.....	17-18
LUGGAGE COMPARTMENT.....	17
Rust Prevention.....	15
SEATS.....	19
SEAT BELT REMINDER SYSTEM.....	20
SIDE IMPACT PROTECTION.....	15
Six Step Paint Process.....	16
STATION WAGONS.....	8-10
Uni-Lock Safety Harness.....	20
VENTILATION.....	20
WINDOWS.....	18
Windshield Wipers.....	18

CHASSIS FEATURES

BRAKE SYSTEM.....	14
FRAME.....	12
FRONT DISC/REAR DRUM BRAKES.....	14
FRONT SUSPENSION.....	13
STEERING COLUMN.....	12
Manual Steering.....	12
POWER BRAKES.....	14
POWER STEERING.....	13
REAR SUSPENSION.....	13
SUSPENSION SPECIFICATIONS.....	14
Tires.....	13
Wheels.....	13
COLOR AND TRIM.....	29-30

MARKET DATA..... 3

OPTIONS

Complete Listing.....	25-26
AM RADIO.....	23
AM/FM RADIO.....	23
BROUGHAM INTERIOR TRIM GROUP.....	22
BUMPER GUARDS.....	22
COLOR-GLOW PAINTS.....	23
DOOR EDGE GUARDS.....	21
Floor Shifts.....	24
Four-Speed Transmission.....	21
HIGH BACK BUCKET SEATS.....	22
INSTRUMENTATION GROUP.....	22
Intermittent Windshield Wipers.....	22
Laser Tape Stripe.....	23
POWER DOOR LOCKS.....	21
RALLYE EQUIPMENT GROUP.....	23
RAM AIR HOOD SCOOPS.....	21
REAR WINDOW ELECTRIC DEFROST.....	21
SelectAire Air Conditioner.....	22
SIX-WAY POWER BENCH SEATS.....	21
SPECIAL SEAT TRIMS.....	22
Traction-Lok Differential.....	21
TRAILER TOWING PACKAGES.....	23
Vinyl Roof.....	23
VISIBILITY GROUP.....	23
WHEEL COVERS.....	23-24
400 CID 2V 8-CYLINDER.....	21

PERFORMANCE..... 24

ENGINES.....	24
MANEUVERABILITY.....	24
TRANSMISSIONS.....	24

POWER TEAMS..... 27

PRODUCT HIGHLIGHTS..... 4

SPECIFICATIONS

BODY DIMENSIONS.....	28
BRAKE SPECIFICATIONS CHART.....	27
POWER TEAM SELECTIONS CHART.....	27
STEERING SPECIFICATIONS.....	27
TIRE AVAILABILITY CHART.....	26
WHEEL SPECIFICATIONS.....	26

STANDARD EQUIPMENT..... 11

STATION WAGON FEATURES..... 8

NOTE: New features in bold-face type.

TORINO 9 MODELS

FOUR-DOOR PILLARED HARDTOPS (2)

	Sales Code No.	Body Code No.
Torino	27	53B
Gran Torino	31	53D



Gran Torino

TWO-DOOR FORMAL HARDTOPS (3)

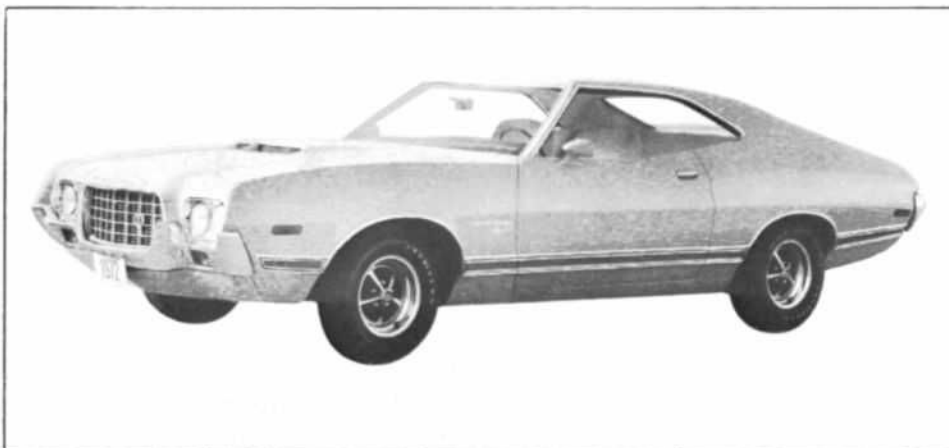
	Sales Code No.	Body Code No.
Torino	25	65B
Gran Torino	30	65D
Gran Torino Sport	38	65R



Torino

TWO-DOOR SPORTSROOF HARDTOP (1)

	Sales Code No.	Body Code No.
Gran Torino Sport	35	63R



Gran Torino Sport

STATION WAGONS (3)

	Sales Code No.	Body Code No.
Torino	40	71B
Gran Torino	42	71D
Gran Torino Squire	43	71K



Gran Torino Squire

THE TORINO MARKET



Gran Torino

The 1972 Torino is the most changed car in the intermediate market according to information now available. It sports new styling, new ride and handling, new engineering and new options. Its LTD-like quiet ride and tough new four-link "Stabul" rear suspension system place Torino in a class by itself by giving it big car ride and comfort at intermediate car prices.

For the first time, Torino will be of body/frame construction with two wheelbase sizes. All Torino two-door hardtops will be built on a shorter 114" wheelbase for a more sporty appearance, greater maneuverability and easier handling. All four-door pillared hardtops and wagons will be on a longer 118" wheelbase for greater interior roominess and a bigger, more comfortable ride.

The intermediate segment can be divided into three general markets — the two-door hardtops, the sedans and the station wagons. In 1972, Torino is designed to compete effectively in all of these market segments.

HARDTOPS — The intermediate market is dominated by hardtop buyers. For the total industry, over 70% of all intermediate sales are in the two-door hardtop body type. Major competition sells almost 75% of its mix in two-door hardtops while Torino's mix is slightly over 55%. The 1972 Torino series has four 2-door hardtop models — the standard Torino, Gran Torino, Gran Torino Sport-Formal and Gran Torino-SportsRoof — to compete in this hot selling 2-door hardtop intermediate market. Almost every purchase motivation, whether it be price, utility, luxury or performance, can be satisfied with one of these four vehicles. And all of them have Torino's outstanding styling and handling pluses.

SEDANS — In 1972, Torino series sedans will be constructed for the first time in the popular and stylish 4-door pillared hardtop models, first introduced on the full sized Ford in 1971. These models, which are equipped with frameless, ventless window glass, appeal to those buyers who want the sporty styling of a hardtop but also prefer the sturdy strength of a sedan. There are no comparable models offered by any other manufacturer in the intermediate segment to our knowledge.

Traditionally, Torino 4-door sedans have done well in the

market. These well-constructed cars have always had great appeal to older owners who are primarily interested in good value and who need or want the extra room and convenience a four-door model offers. 1972 models, which are offered in both the standard Torino and the Gran Torino series, will continue this established practice. Ford salesmen out-sold all competitive intermediate 4-door models last year and since Torino will be all-new in 1972, and competing against probably unchanged competition, this sales advantage should be maintained and expanded.

STATION WAGONS — The third major market of the intermediate segment is the station wagon market. In 1972, the segment leading Torino wagons will come in three models — the standard Torino, the Gran Torino and the beautiful Gran Torino Squire. All of the features which have made Ford the "Wagonmaster" of the industry have been incorporated into the big new 1972 Torino wagons. The rear load space has been expanded to handle a full 4 x 8 foot sheet of paneling, lying flat with the tailgate open and the 3-way magic doorgate has been installed on all wagons. In addition, your customers, who purchase these wagons because of the price and utility, will experience the stopping power of standard power front disc brakes on Squire models with manual disc brakes standard on all Torino and Gran Torino models. Any way you look at it, Torino wagons, more than ever, are the wagons in the intermediate market.

The longer, lower, wider 1972 Torino models, which will have highback bench seats, steel guard rail side impact protection and manual front disc brakes as standard, can also be personalized with a long list of comfort and convenience, performance and appearance options. Six-way power seats, two new special paints, highback bucket seats, numerous engine-transmission combinations and many trim options are just a few of the options which can be utilized to tailor the car to fit the customer. Finally, should your customer want the utmost in interior appointments and luxury styling, the new Brougham option package is available on all Gran Torino series hardtops and sedans. With this option, it is obvious what the term "LTD-like" means. Torino 1972 — the mid-size car that got the message!



Gran Torino Sport

1972 TORINO PRODUCT HIGHLIGHTS

NEW CAR LINE FROM THE GROUND UP

For 1972, Torino introduces an outstanding departure from former designs. It starts with a rugged, all-new "big-car" body/frame construction which extends throughout Torino's striking lineup of cars and wagons for '72. The new frame has "torque-box" design, which virtually isolates passengers from road shocks, and includes an "S"-shaped energy-absorbing front configuration for extra safety.

Mounted on the frames are Torino's all new, rugged bodies which are built to last longer and are better insulated than ever before. A new front suspension along with a new four-link "Stabul" rear suspension which has coil springs and shock absorbers that are computer-selected in tune with the new body/frame construction. This new over-all design provides an exceptionally smooth, quiet, stable ride.

From the outside, Torino's "big-car" look features new, contemporary styling with a rakish, 60 degree windshield slant. Two door models have a shorter 114" wheelbase and wider treads for a sporty "road-hugger" appearance. Four door models have a longer 118" wheelbase and wider treads for "big-car" look, roominess and ride.

The attractive new grille on the Torino series is of dark argent, one-piece corrosion resistant ABS plastic with egg-crate motif and dual horizontal headlights.



All other models in the series are distinguished by a high series grille which has a light argent flattened oval design with bright leading edges. Bright headlamp doors and a distinctive hatch-type hood design further enhance the appearance of Gran Torino models.

The contemporary styling is further highlighted by frameless, ventless curved-side glass, recessed door handles and a host of other new exterior features.

Inside, new sculptured high back front bench seats are standard. The Torino series features attractive, durable all-vinyl seat trim and door panels . . . plush, deep-pleated vinyl seat trim, wall-to-wall color-keyed carpeting and other luxury features on higher models. The new performance-oriented instrument panel has modern, easy reading instruments and improved controls. Ford's famous DirectAire

ventilation is now standard on 4-door as well as 2-door models. The lockable, energy-absorbing steering column has a new space-saving "mini" design plus a special coupling which helps insulate the steering wheel against road shocks. Manual front disc brakes of an improved design are also standard on all sedans and hardtops for greater safety.

(See features pages for additional information.)

ALL NEW STATION WAGONS

In addition to the outstanding features of the new Torino car line, the all new Torino Station Wagons feature: More usable load space—48.2 inches between wheelhouses (5.6 inches wider than previous design), a new three-way Magic Doorgate which drops down as a tailgate or opens out like a door with the glass up or down, and standard power front disc brakes. New color-match simulated woodgrain paneling on the Squire model permits a hint of the body color to show through for added color harmony.



IMPORTANT NEW OPTIONS

The all new Torino is further complemented by a wide array of new or improved options for '72. New integral-type power steering provides more instant response to wheel movement. A new six-way power bench seat offers better, more convenient seat adjustment than former four-way option and an improved rear window electric defrost reduces the time required to clear the window of troublesome ice and snow. The new Brougham Interior Trim Group adds a new level of luxury to Gran Torino models. Knitted vinyl and sporty cloth trim also available on certain models. Convenient map lights have been added to Torino's Visibility Group for better interior lighting.

The new Rallye Equipment Group, which includes popular performance equipment, and the Instrumentation Group will appeal to driving and performance enthusiasts. A functional ram-air hood scoop on the Gran Torino and Gran Torino Sport models helps develop more power and a new 351 CID 4V V-8 and 400 CID 2V V-8 along with other power team advancements mean new and better performance for '72. The optional SelectShift Cruise-O-Matic has a larger capacity oil cooler for added protection under heavy loads.

Both AM and AM/FM radios have been miniaturized and improved in reliability and power. Two optional Color-Glow metallic paints—Ivy Glow and Gold Glow—have been added and a new Laser Tape Stripe is available on Gran Torino Sport and Gran Torino 2-door models. Two new optional trailer towing packages include equipment for medium duty (up to 3500 lbs.) and heavy duty (up to 6000 lbs.) trailer hauls. See options pages for additional information.

TORINO SERIES



MODELS

SALES
NUMBER

2-Door Hardtop—Formal Roof	25
4-Door Pillared Hardtop	27

MAJOR STANDARD FEATURES

EXTERIOR

- All new rugged body/frame construction with rakish contemporary styling.
- Shorter 114" wheelbase 2-door models with 203.7" overall length and wider tread for sporty, "road-hugger" look.
- Longer 118" wheelbase 4-door models with 207.7" overall length for "big car" look, roominess and ride.
- Attractive, dark argent, one-piece corrosion resistant ABS plastic grille with egg crate motif.
- Distinctive, dual horizontal headlights.
- Massive, wraparound chrome-plated front bumper—integral turn indicators and parking lights plus lower valance panel.
- Recessed door handles with one-step keyless locking.
- Rakish 60° windshield and bright reveal mouldings around windshield and rear window.
- Front and rear side marker lights.
- Frameless, ventless curved side glass.
- Bright drip and window mouldings.
- Bright "FORD" block letters on left front of hood.
- Bright "TORINO" block letters on front quarter panels and lower deck lid.
- Massive, wraparound chrome-plated rear bumper with integral horizontal taillamps and backup lamps . . . valance panel below.
- Bright stainless steel hub caps.



INTERIOR

- Comfortable high back front bench seats with seat back locks on folding seat backs.
- Attractive, durable all-vinyl seat trim with all-vinyl color-keyed door trim panels.
- Vinyl-coated color-keyed floor mats front and rear.
- Seat belts front and rear with Uni-Lock shoulder harness for driver and front seat passenger. Outboard front (and rear*) seat belts are self-adjusting with retractors.
- Front seat belt reminder system (*).
- Performance-oriented instrument panel with energy absorbing padding and modern, easy-reading instruments . . . textured metal lower instrument panel color-keyed to interior.
- Two-spoke energy absorbing steering wheel and energy absorbing locking "mini" steering column.
- Glove box with twist lock.
- Turn signals with lane-change feature.
- Dome light in center of roof.
- Day-night rear view mirror, vinyl backed and framed.
- Energy absorbing arm rests.
- Sun visor safety padded left and right.
- Suspended accelerator, clutch and brake pedals.

FUNCTIONAL

- Dependable, economical 250 CID 6-cylinder engine.(†)
- Three-speed, fully synchronized, manual transmission(†) with column shift.
- Manual front Disc Brakes.
- Self-adjusting brakes with dual master cylinder and warning light.
- Heater and defroster with 3-speed blower . . . illuminated controls.
- "DirectAire" ventilation system in all models.
- Steel "Guard Rails" side impact protection system and energy-absorbing "S" frame construction.
- Windshield wipers, two-speed electric with dual stream washers.
- E78 x 14 BSW belted bias-ply tires.
- Convenient pin and slot bumper jack system.

See page B-11 for a complete list of standard equipment.
(*) December, 1971 availability.

(†) 250 CID engine with three-speed manual transmission
N/A in California.

GRAN TORINO SERIES



MODELS

2-Door Hardtop—Formal Roof
4-Door Pillared Hardtop

SALES
NUMBER

30
31



MAJOR STANDARD FEATURES

EXTERIOR

In addition to or in place of features on the Torino Series:

- Longer 207.3" over-all length of 2-door.
- Longer 211.3" over-all length of 4-door.
- High series corrosion resistant ABS plastic grille with light argent flattened oval egg-crate design . . . bright leading edges framed with bright chrome-plated molding.
- Gran Torino ornament left of center on grille.
- Bright "FORD" block letters over center of grille.
- Bright headlamp doors at sides of grille.
- Distinctive hatch-type hood design.
- Bright wheelip mouldings.
- Attractive lower bodyside moulding.
- Bright "GRAN TORINO" block letters on front quarter panels and right rear deck lid.
- Ornamented deck lid lock cover.

INTERIOR

In addition to or in place of features on the Torino series:

- Plush, deep-pleated cloth and vinyl seat trim and "wall-to-wall" color-keyed carpeting.
- Rear arm rests.

FUNCTIONAL

The Gran Torino series shares many features with the Torino series. Mutual features include:

- Dependable, economical 250 CID 6-cylinder engine.
- Three-speed, fully synchronized, manual transmission with column shift.
- Manual front disc brakes.
- Self-adjusting brakes with dual master cylinder and warning light.
- Heater and defroster with 3-speed blower . . . illuminated controls.
- "DirectAire" ventilation system in all models.
- Steel "Guard Rails" side impact protection system and energy-absorbing "S" frame construction.



- E78 x 14 BSW belted bias-ply tires .
 - Convenient pin and slot bumper jack system.
- Additional features on the Gran Torino include:
- Windshield wipers, concealed—two-speed electric with dual stream washers.

See page B-11 for a complete list of standard equipment.

GRAN TORINO SPORT SERIES



MODELS

- 2-Door Hardtop—Formal Roof
- 2-Door Hardtop—SportsRoof

SALES NUMBER

- 38
- 35



MAJOR STANDARD FEATURES

EXTERIOR

In addition to or in place of features on the Gran Torino series:

- Performance-styled Gran Torino Sport hood with integral hood scoop.
- Dual outside racing mirrors, color-keyed—left-hand remote control, right-hand manual control.
- Bright accented hub caps with trim rings.

INTERIOR

In addition to or in place of features on the Gran Torino series:

- Plush deep-horizontal pleated all vinyl trim.
- Attractive harmonizing door trim with molded-in arm rest.
- Deluxe two-spoke steering wheel with simulated woodtone applique.
- Bright rimmed pedal pads.

FUNCTIONAL

In addition to or in place of features on the Gran Torino series:

- Powerful 302 CID 2V V-8 engine.
- E70 x 14 wide oval belted WSW tires with 6" wide rim wheels. (†).

See page B-11 for a complete list of standard equipment.

(†) Minimum on 2-door with 302 engine. See Tire Availability, page B-26.



TORINO STATION WAGONS

OUTSTANDING DESIGN

Torino Wagons for 1972 will incorporate many of the advanced design characteristics of the sedans and hardtops. These features, such as, new body/frame construction, new front & rear suspension, a longer 118 in. wheelbase with wider front and rear treads, high styled ventless frameless door glass, and other outstanding features, provide greater safety, stability, riding comfort and long lasting value than ever before. The all new design also includes a big 48.2 inch loadspace between wheelhouses. This is 5.6 inches wider than previously and permits carrying wide commodities such as 4 x 8 ft. sheets of building materials. Other "big-wagon" features that make Torino the largest selling, most popular wagon on the intermediate market are described below. Also see Torino options availability on Page B-25-26.



THREE-WAY MAGIC DOOR-GATE

Big news on all Torino wagons for '72 is the addition of Three-Way Magic Door-gate. Made famous on the full-size Ford Wagon, the Magic Door-gate folds down like a tailgate or swings open like a door. When used as a door, the glass can be up or down. A safety interlock system requires that the glass be lowered before the door can be used as a tailgate and a safety lock button prevents accidental opening of the door-gate. When the button is depressed, the door can be opened only with the key or the optional power tailgate lock button, which is operated by a button on the driver's door. A power-operated tailgate window is optional on all models.

On all wagons, one easy motion folds the second seat into the floor to provide an 87.3-inch long floor area with the tailgate up.

All load floor panels, including the second seat back, are coated with a special vinyl base paint that resists scuffing and scratching.

An optional rear-facing third seat provides seating for two additional passengers.

POWER FRONT DISC BRAKES

For 1972, power brakes are standard on the Torino Squire station wagon series. Front disc brakes and flared drum rear brakes are proportioned in their application for easier braking and safer, more carefree driving.



UNDER FLOOR STORAGE COMPARTMENT

All Torino wagons include an extra storage compartment hidden beneath the load floor. This handy compartment is lockable and provides an additional 8.1 cubic feet of storage space.

SQUIRE COLOR-MATCH WOODGRAIN

The exterior appearance of the 1972 Gran Torino Squire is made further attractive by a new "Color-Match" type simulated woodgrain paneling. Applied to the body-side and tailgate after paint, the semi-transparent quality of the applique permits a hint of body color to show through the woodgrain for a harmonious two-tone effect.

NEW INTERIOR TRIMS

1972 Torino Station Wagons are trimmed in handsome long wearing vinyl. Cushions are faced with a single panel and the backs have two panels with the horizontal seam slightly above the midpoint. The smartly styled door trim panels are in matching material. Three attractive trim colors are available to harmonize with the exterior color—black, medium blue and medium green.

The standard trim in the Gran Torino Wagon is a deep pleated design in all Ruffino Vinyl. The door trim panels are padded and paneled to harmonize. A Gran Torino name plate is mounted in the upper center panel of the front doors.

The top of the line Squire is trimmed in upholsterer's quality all vinyl material with an attractive horizontal pleating on the seat backs that continues into the cushion area forming a box pleat design. The door panels are also box pleated and padded to match. A Squire escutcheon plate is centered in the upper door panel.

Both the Gran Torino and the Gran Torino Squire station wagon trims are offered in a choice of black, medium blue, medium green and ginger to harmonize with the choice of exterior color.

Luxurious breathable knitted vinyl upholstery is offered as an option on the two high series wagons.



DELUXE LUGGAGE RACK OPTION

Torino's deluxe luggage rack features wide, strong, steel side rails highlighted by a glass bead texture finish. The rear cross bar, which is fully adjustable, is attached by brackets to slots in the side rails, it can be moved forward and locked in position when less than full loads are carried. The deluxe rack includes a built-in air deflector with glass bead finish which directs an air stream over the rear window to help prevent the accumulation of dirt deposits.

TORINO AND GRAN TORINO STATION WAGONS



MODELS

Torino 4-Door
Gran Torino 4-Door

SALES
NUMBER
40
42

MAJOR STANDARD FEATURES

TORINO WAGON

In addition to or in place of features on the Torino 4-Door Pillared Hardtop.

EXTERIOR

- Long 211.5" overall length—2.5" longer than the 1971 Torino Wagon.
- Bright "FORD" block letters over left headlights.
- Bright drip mouldings.
- Bright quarter window and tailgate window mouldings.
- Bright "TORINO" block letters on lower right corner of tailgate.
- Vertical taillamp design with integral backup lights.

INTERIOR

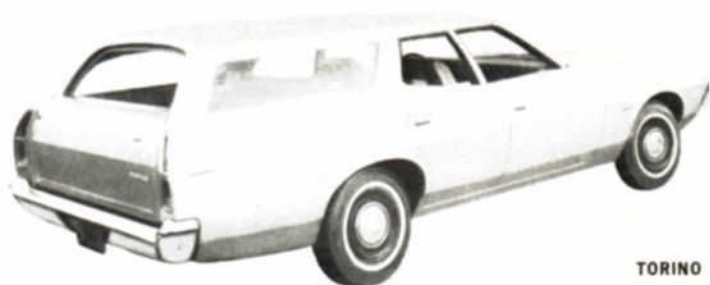
- Extra wide 48.2" loadspace between wheelhousings.
- Fold-down second seat for a long load floor length of 87.3" with tailgate up . . . 109.6" with tailgate down . . . 83.5 cubic feet cargo volume.
- Load floor and back of second seat is painted with long wearing vinyl impregnated paint, color-keyed to the interior.
- Lockable storage compartment under load floor adds 8.1 cubic feet of storage space.

FUNCTIONAL

- Three-way "Magic Doorgate"—opens horizontally like a door with window up or down . . . or swings down like an ordinary tailgate.
 - Manual roll-down tailgate window.
 - Manual front disc brakes now standard.
 - G78 x 14 BSW bias-ply tires.
- See page B-11 for a complete list of standard equipment.



TORINO



GRAN TORINO WAGON

In addition to or in place of features on the Torino Wagon, the Gran Torino offers:

EXTERIOR

- High series corrosion resistant ABS plastic grille with light argent flattened oval egg-crate design . . . bright leading edges framed with bright chrome-plated moulding.
- Over 6 inches longer than '71 model.
- Gran Torino ornament left of center on Grille.
- Bright "FORD" block letters over center of Grille.
- Bright headlamp doors at side of Grille.
- Distinctive hatch-type hood design.
- Concealed windshield wipers.
- Bright wheelip mouldings.

INTERIOR

- Plush, deep-pleated vinyl seat trim and "wall-to-wall" color-keyed carpeting.
- Front and rear arm rests.

FUNCTIONAL

- Additional sound deadening and insulating material (See page B-16).



TORINO

GRAN TORINO SQUIRE STATION WAGON



MODEL

Gran Torino Squire 4-Door

SALES
NUMBER

43

MAJOR STANDARD FEATURES

GRAN TORINO SQUIRE WAGON

In addition to or in place of features on the Gran Torino Wagon, the Gran Torino Squire offers:



EXTERIOR

- "Color-Match" type woodgrain paneling applique on bodyside and tailgate.
- Simulated limed oak woodgrain vinyl-clad aluminum side rails frame "Color-Match" paneling.
- Bright "GRAN TORINO SQUIRE" letters on front quarter panels.
- Full wheel covers.

INTERIOR

- Luxurious vinyl seat trim . . . color coordinated door panel trim features simulated woodtone applique.
- Deluxe two-spoke steering wheel with simulated woodtone applique.
- Simulated woodtone applique on instrument panel.

FUNCTIONAL

- Powerful 302 CID V-8 engine.
- Power-front disc brakes.
- Dual-note horn.

See page B-11 for a complete line of standard equipment.



TORINO STANDARD EQUIPMENT

In addition to the standard features listed, Torino also includes as standard equipment the many Ford Lifeguard Design Safety Features listed on page ii.						
EXTERIOR	Torino	Gran Torino	Gran Torino Sport	Torino Wagon	Gran Torino Wagon	Gran Torino Squire Wagon
CONCEALED WINDSHIELD WIPERS	—	X	X	—	X	X
GLASS , tinted backlite (SportsRoof)	—	—	X	—	—	—
HOOD , counterbalanced, front opening	X	X	X	X	X	X
Base hood	X	—	—	X	—	—
Hatchhood Panel	—	X	X	—	X	X
Gran Torino Sport hood with scoop	—	—	X	—	—	—
LIGHTS : Backup, parking, dual headlights, front and rear side marker	X	X	X	X	X	X
TAILLIGHTS : Horizontal section with backups inboard	X	X	X	—	—	—
Vertical with backup lights in lower section	—	—	—	X	X	X
MOULDINGS : Bright drip mouldings	X	X	X	X	X	X
Bright lower body side mouldings with black fill and quarter panel extensions	—	X	X	—	X	—
Wheel lip mouldings	—	X	X	—	X	—
Rear window bright reveal mouldings	X	X	X	X	X	X
Windshield reveal mouldings	X	X	X	X	X	X
MIRROR , outside (left hand)	X	X	—	X	X	X
outside, dual racing, L. H. remote control	—	—	X	—	—	—
ORNAMENTATION : "FORD" block letters, front, left of hood	X	—	—	X	—	—
"FORD" block letters, front over center of grille	—	X	X	—	X	X
"TORINO" block letters on RH deck lid and front quarter panels	X	—	—	—	—	—
"GRAN TORINO" block letters on RH deck lid and front quarter panels	—	X	—	—	—	—
"GRAN TORINO SPORT" block letters on front quarter panels, "GRAN TORINO" on RH deck lid	—	—	X	—	—	—
"TORINO" block letters lower right tailgate and front quarter panels	—	—	—	X	—	—
"GRAN TORINO" block letters lower right tailgate and front quarter panels	—	—	—	—	X	—
"GRAN TORINO SQUIRE" bright letters on front quarter panels, "GRAN TORINO" on lower right doorgate	—	—	—	—	—	X
GRILLE : Plastic-argent painted-bright edges	X	—	—	X	—	—
Plastic-argent—egg crate design, flat oval	—	X	X	—	X	X
Identification ornament	—	X	X	—	X	X
HUB CAPS , stainless steel	X	X	—	X	X	—
HUB CAPS AND TRIM RINGS	—	—	X	—	—	—
SIMULATED WOODGRAIN TRIM ON TAILGATE AND BODY SIDES	—	—	—	—	—	X
VENTLESS DOOR GLASS	X	X	X	X	X	X
WHEEL COVERS , full	—	—	—	—	—	X
INTERIOR						
ARMRESTS : Energy absorbing, front and rear on 4-door models	X	X	X	X	X	X
ASH TRAY , front (not lighted)	X	X	X	X	X	X
CIGARETTE LIGHTER : In instrument panel	—	X	X	—	X	X
COURTESY LIGHTS : Center of roof	X	X	X	X	X	X
DOOR HANDLES , Inside: Safety design	X	X	X	X	X	X
Outside: Recessed	X	X	X	X	X	X
DOOR LATCHES : Safety-Yoke type	X	X	X	X	X	X
FLOOR COVERING : Vinyl-coated rubber mat, color-keyed	X	—	—	X	—	—
Carpet, color-keyed	—	X	X	—	X	X
GLOVE BOX WITH LOCK	X	X	X	X	X	X
HEAD RESTRAINTS —High Back Seats—Front	X	X	X	X	X	X
INSTRUMENT PANEL : Energy absorbing structure, full crash pad, printed instrument cluster circuitry	X	X	X	X	X	X
LOCKABLE STEERING COLUMN	X	X	X	X	X	X
MIRROR, INSIDE DAY/NITE REARVIEW	X	X	X	X	X	X
SCUFF PLATES , aluminum	X	X	X	X	X	X
SEAT BACK LOCKS (all folding seats)	X	X	X	X(a)	X(a)	X(a)
SEAT BELTS : Front & rear lap including center passenger	X	X	X	X	X	X
SHOULDER HARNESS : Front driver & outboard passenger	X	X	X	X	X	X
STEERING WHEEL , 2-spoke, energy absorbing, oval design	X	X	X	X	X	X
STORAGE COMPARTMENT —Below floor with lock	—	—	—	X	X	X
SUN VISORS , padded	X	X	X	X	X	X
SUSPENDED ACCELERATOR clutch and brake pedals	X	X	X	X	X	X
TURN SIGNALS WITH LANE-CHANGE FEATURE	X	X	X	X	X	X
(a) Rear folding seats on station wagons.						
FUNCTIONAL						
BRAKES : Dual master brake cylinder w/warning light, self-adjusting	X	X	X	X	X	X
Foot-applied emergency brake, hand released	X	X	X	X	X	X
Manual front disc brakes	X	X	X	X	X	—
Power front disc brakes	—	—	—	—	—	X
ENGINE —250 CID IV Six	X	X	—	X	X	—
302 CID 2V V-8	—	—	X	—	—	X
HAZARD WARNING FLASHER : Switch on steering column	X	X	X	X	X	X
DIRECTAIRE VENTILATION	X	X	X	X	X	X
HEATER , blend-air type, 3-speed blower	X	X	X	X	X	X
KEYS : Reversible type and keyless door locking	X	X	X	X	X	X
MUFFLER , aluminized & stainless components	X	X	X	X	X	X
TAILGATE , wagons Magic Doorgate: Counterbalanced, three way	—	—	—	X	X	X
TRANSMISSION —3-Speed manual	X	X	X	X	X	X
WINDSHIELD WIPERS , two-speed electric with dual stream washers	X	X	X	X	X	X
DUAL NOTE HORN	—	—	—	—	—	X

TORINO FEATURES

CHASSIS FEATURES



FRAME

The new Torino torque box frame has been designed to complement the new bodies and virtually isolate passengers from road shocks, thereby providing a smooth, comfortable ride. This marks the first use of body/frame construction for the intermediate series.

A major safety feature of the frame is the "S" shape of the front frame rails. This is the same energy-absorbing configuration pioneered in the standard sized Ford frame. Features of the design are:

Reinforced outer frame bracing from the front spring pockets rearward to localize the front rail collapse forward of the steering gear and front body mounts.

Reinforced front torque boxes to further localize energy absorption.

The rear engine support crossmember is mounted in rubber to isolate the transmission and drive line.

A rugged number four cross member contains the spring pocket for the coil springs, the mounting holes for the shock absorbers and mounting anchors for the upper two trailing arms.

A special feature of the frame is the reinforcing of the side rail at the torque box area to anchor the lower trailing arms resulting in an exceptionally durable construction. This frame construction makes the Torino especially suitable for towing service should it be required.

STEERING COLUMN

A new "mini" steering column of a shorter design has been developed for the 1972 Torino. The column assembly does not extend through the dash panel. The steering shaft is connected to a universal joint and extends through the dash to a special insulator coupling at the steering gear. Because the steering column shaft is not connected directly to the

steering gear, the possibility of steering wheel shake and vibration from the frame and steering linkage is reduced.

Torinos with manual transmissions and automatic transmissions with floor mounted shift levers have a locking mechanism mounted in the steering column. This consists of the ignition switch, which is convenient to the driver's right hand, and a locking button, which is convenient to the left hand. The ignition switch has five positions: Accessory . . . Lock . . . Off . . . On . . . Start in that sequence. To lock the column press the button and turn the key to lock. Only in this circumstance can the key be removed. To unlock the steering column and ignition merely insert the key and rotate the ignition switch to the desired position. The locking button will pop out automatically. Because both hands are required, this design virtually eliminates the possibility of accidentally locking the steering column with the vehicle in motion. Torinos with column mounted shift lever and automatic transmissions do not have the lock button since the lever must be in park position to lock the ignition and the park position automatically locks the transmission as well as the column.

MANUAL STEERING

Torino's manual steering system is a parallelogram linkage type with a cross-link and idler arm. This system offers more positive vehicle control under all driving conditions with a minimum of steering effort. Features of the steering system include:

The cross-link bar is positioned to improve directional stability and eliminate oversteer.

The steering shaft control assembly is driven on recirculating ball bearings in a closed guide tube to reduce friction.

The "Magic-Circle" steering gear is filled with a lifetime lubricant which, under normal circumstances, never needs changing. (See page B-27 for steering specifications.)

TORINO FEATURES

POWER STEERING

Ford's power steering with power applied directly to the "Magic Circle" gear is available in the Torino series for the first time in the '72 models. This is the same system used in the Thunderbird carline.

Ford Motor Company's "Better Idea" power steering pump with "fluidic control" is also a feature of the Torino power steering system. Other features of this power steering system include:

An integral control valve and steering gear design provides instant response to wheel movement. A built-in low-restriction control valve allows the wheels to quickly return to center position after making a turn.

A torsion bar element in the steering shaft provides driver "feel" of the road.

A 21.7 to 1 overall steering ratio provides responsive handling with light steering effort.

Lock-to-Lock steering of 3½ turns . . . 28% faster than manual steering.

(See page B-27 for steering specifications.)

WHEELS

All Torino wheels are of stamped steel construction with a ventilated disc welded to a safety-type rim.

Five large retaining nuts plus a centering pilot automatically center the wheel on the hub.

TIRES

The standard tire on all 1972 Torino models is a belted bias-ply .78 aspect ratio design. This type of tire design features a low profile and provides improved vehicle braking, traction, cornering and long tread life. Outlined below are some of the principal benefits of this tire design:

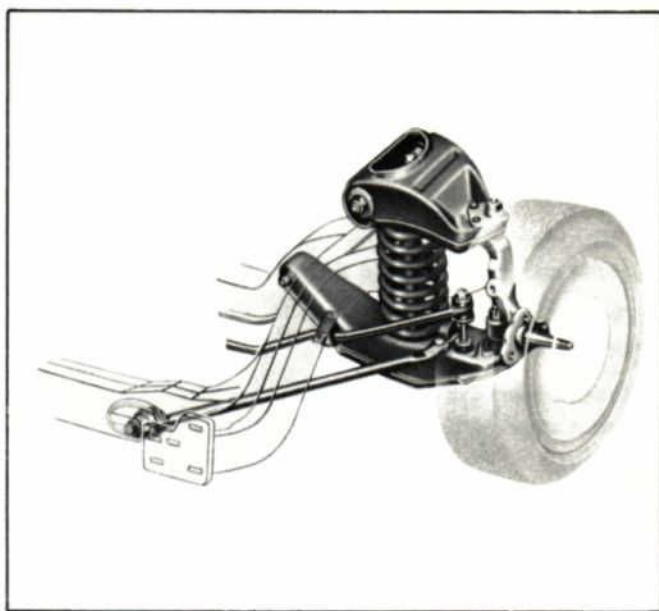
Longer wear . . . the tires have a broader "foot-print" on the road and the tread is backed up by belts, it doesn't squirm. (The tread rolls like a belt decreasing internal and surface friction.)

Improved traction and cornering . . . the belts hold the tread flat on the road and provide support to the sidewalls under normal driving conditions.

See "Tire Availability" chart page B-26.

FRONT SUSPENSION

For 1972 Torino features a departure from the high coil spring designs used in the past. The new suspension continues to be a short and long arm type but with the coil springs mounted on the lower arm. This clears the engine compartment of space robbing spring towers. The "36,000 mile lub." ball joints are continued. Springs and shock absorbers are computer tuned to match the weight/ride requirements of each application depending on the car model, engine selection and optional equipment. Front suspension features include:



Left and right drag struts stabilize the lower arms and are attached to the frame through rubber bushings to eliminate metal-to-metal contact. The compliant rubber bushings reduce the amount of vibration and noise transmitted to the passenger area and allow the wheels to move slightly toward the rear when hitting a bump. This controlled rear movement soaks up part of the initial road shock before it reaches the passenger area.

A link-type, rubber-bushed stabilizer bar connects the right- and left-hand lower suspension arms to help prevent excessive lean when cornering.



REAR SUSPENSION

Torino for 1972 uses a new four-link "Stabil" rear suspension system which improves stability of the car in either loaded or unloaded conditions. The coil springs, as in the front suspension, are computer selected to help provide an exceptionally smooth ride. Features of the system include:

Four longitudinal arms control the position of the rear axle assembly and absorb braking and accelerating forces.

TORINO FEATURES

The lateral location of the axle is maintained due to the arrangement of the arms. The lower arms are splayed inward from their attachment and the short upper arms are splayed outward placing the assembly under tension laterally. This arrangement gives the car strong directional stability and resistance to side-to-side body shake on rough roads.

Coil springs ride in deep rubber insulated caps in the frame and are seated on the axle.

The arrangement of the control arms tends to stabilize the vehicle in roll.

Shock absorbers are mounted at an angle to help provide a smoother, flatter ride.

Heavy duty and competition suspensions are available. See options, pages 25-26.

TORINO SUSPENSION SPECIFICATIONS

FRONT

Type.....Independent with Ball Joints
and Drag Struts

Springs.....Helical Coil, Rubber-Insulated

Shock Absorbers....Direct, Double Acting Hydraulic

Stabilizer.....Link Type, Rubber-Bushed

Wheel bearings.....Taper Roller

REAR

Type.....Four-trailing Control Arms

Springs.....Helical Coil, Rubber-Insulated

Shock Absorbers....Direct, Double Acting Hydraulic

BRAKE SYSTEM

Torinos use a dual hydraulic brake system with a dual-chambered master cylinder. Important features of the system are:

Each master cylinder chamber is independent of the other with its own fluid reservoir and actuation section.

Separate connections for the brake lines linking one chamber to the front brakes and the other to the rear to protect against total loss of braking capability in the event of hydraulic pressure loss in either line.

A light mounted on the instrument panel indicates a loss of hydraulic pressure in either brake line when brakes are applied.

Immediate servicing of the brake system is required if the brake warning light comes on.

See page B-27 for brake specifications.

FRONT DISC/REAR DRUM BRAKES

For 1972, manual brakes, standard on Torino, Gran Torino cars and wagons, include new front disc brakes along with drum-type rear brakes for increased safety and improved performance. This new system replaces the former all drum system. Manual disc brakes with a reasonable pedal effort have been made possible by a new simplified disc brake design utilizing a larger piston area.

The major components of the new brake are: a cast iron ventilated disc rotor, a caliper housing, and an anchor plate. The caliper is a single piston-type with inner and outer brake pads. The caliper slides on machined surfaces in the anchor plate. When the brakes are applied, the caliper automatically centers and pressure is applied equally through the brake pads to both sides of the rotor. The ventilated cast iron disc affords both effective cooling and water dissipation. A stamped steel splash shield further protects the brake from road dirt.

While similar in appearance to previous designs, the new standard front disc brakes feature:

- The larger caliper piston—3.1" diameter versus 2.38"—reduces hydraulic line pressure approximately 40%.
- Reduced parts complexity—12 parts versus 26 parts in previous designs for easier service.

The higher rigidity of the caliper and reduced compressibility of the brake lining provides a firm pedal "feel". Pedal pressures for the manual disc brakes are comparable to the former standard manual drum brakes.

Torino's brakes incorporate self adjusters, which maintain proper adjustment. Self-adjustment of the brakes is accomplished each time the brake is applied when the car is moving in reverse.

Torino's parking brake is actuated by a mechanical application of the rear brake shoes. The parking brake is applied by a convenient foot pedal and it is released by a handle below the instrument panel. See page B-26 for brake specifications.

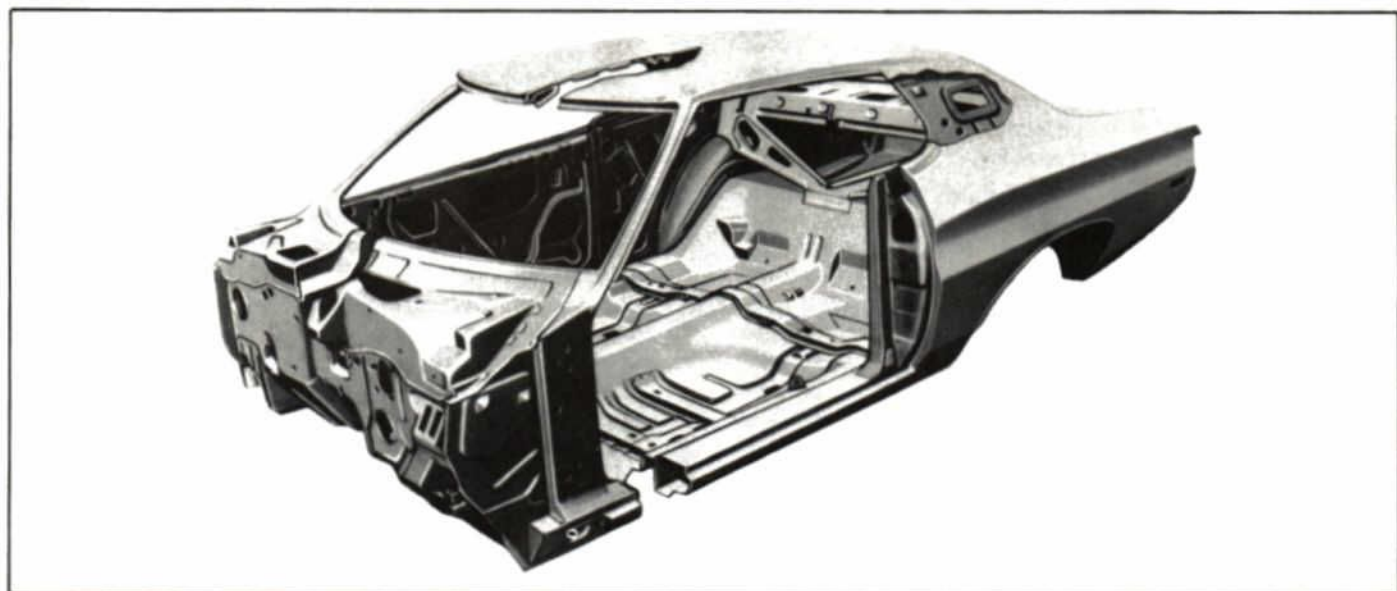
POWER BRAKES

Torino's power front disc/rear drum brakes are standard on the Gran Torino Squire Wagon. This power brake assist incorporates a single-diaphragm power brake booster. The booster reduces pedal effort up to 40% for easier brake application. Power disc brakes are optional on all other models and required on wagons with any optional engines or with air conditioning, and any model with 429 CID engine.



TORINO FEATURES

BODY FEATURES



BODY CONSTRUCTION

The all new 1972 Torino bodies and the unique torque box frames, are designed to work together to reduce road shock, noise and vibration and prevent their being transmitted to the passenger compartment. Features that help make Torino bodies quieter and stronger are:

A rigid body construction coupled with the compliant mounting to the torque box frame results in maximum insulation of the passengers from noise, vibration and harshness.

The new four-door Pillared Hardtop sedan has the appearance of a conventional pillarless construction, but additional rollover strength has been added by sturdy thin body pillars.

Heavy sheet metal crossmembers in front seat and rear sill areas and stamped-in stiffeners add strength to the floor panel.

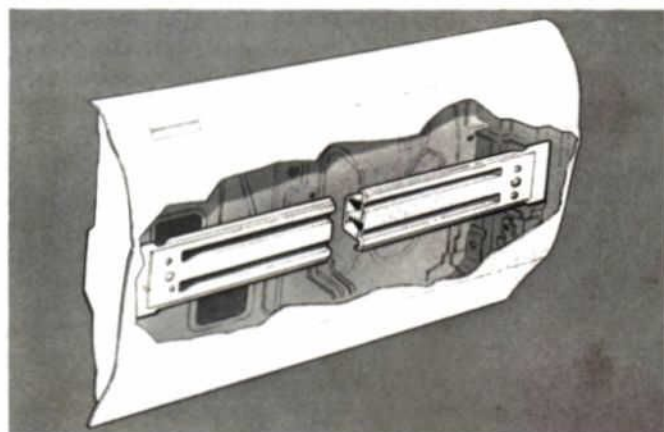
A reinforced, double-panel construction rocker panel which is further strengthened by a U-channel section acts as a secondary frame support to the body.

Cowl ventilation air inlets at the top sides—directly below the windshield permit structural continuity to be built into the cowl top and down the side pillars. All center pillars are manufactured from heavy gauge steel.

Additional body reinforcements in station wagon bodies provide added rigidity.

SIDE IMPACT PROTECTION SYSTEM

All Torino models feature a new steel "Guard Rail" side impact protection system. The rugged steel "Guard Rail" combines with new stronger door hinges and latches to help provide better distribution of forces for greater protection in the event of side impact. The steel "Guard Rail" side



impact system was designed and thoroughly tested to provide maximum strength and impact absorbing qualities with a minimum of additional weight. The beam structure is a flanged, tapered steel channel with a full length partition down the center and closed by a welded-on ribbed plate. The entire assembly is attached to the door end flanges and located directly inside the outer door panel.

In the event of a side impact accident the "Guard Rail" becomes a load-carrying member of the side structure system designed to resist passenger compartment penetration, and wherever possible to cause the vehicles to be deflected from each other.

RUST PREVENTION

All vital underbody parts of the new Torino's have been specially processed for resistance to the corrosive action of mud, water and road salt. Interior surfaces of the door panels, wheel splash areas and fenders have been coated with a zinc-rich primer. Rocker panels are made of zinc-clad steel and have one-way drain valves to prohibit moisture accumulation. Separate front wheelhousing panels help protect the fender areas. Exterior trim mouldings are made of corrosion-resistant metal.

TORINO FEATURES

Body Features (Cont'd)

SIX-STEP PAINT PROCESS

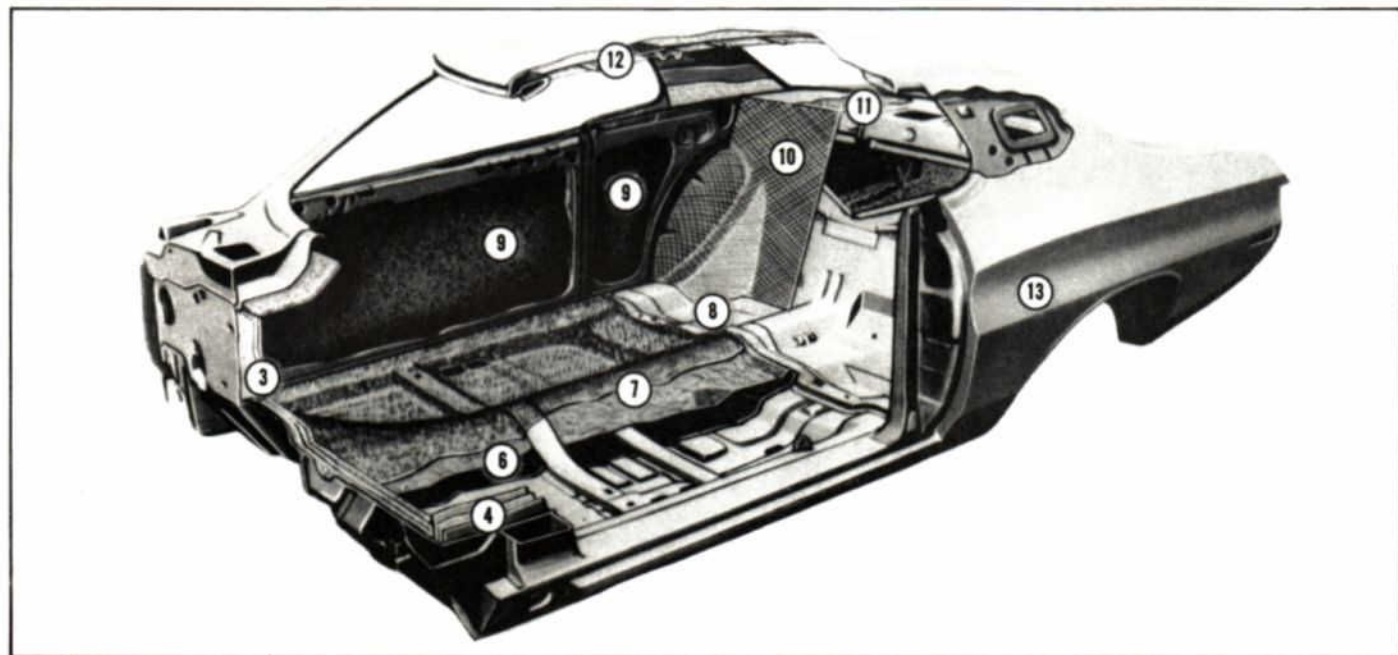
Torino's super diamond lustre paint finish is achieved through a six-step process. Before the triple coats of enamel are applied, the body receives all-over rust protection and two coats of tough epoxy primer. Each primer application is followed by wet-sanding.

The 3-coat acrylic super enamel finish is baked on to form a protective cover over the body sheetmetal while providing the deep-lustre beauty of baked-enamel finish. The final coat of paint on all Torinos is applied by ELECTROSTATIC PAINTING, a new system that produces a better, more uniform paint finish. The system features a new paint gun that works on the principle that unlike electrical charges attract each other; i.e., positive charged particles attract negative ones. An electrode, extending through the barrel of the gun, is held at a negative potential of 60,000 volts with respect to the part

to be painted. The tip of the electrode is located so that air atomized paint particles pass through charged air particles and pick up a strong negative charge. The paint particles are propelled to the body surface by air pressure.

As the paint particles near the surface, the electrostatic forces become great enough so that many of those paint particles normally blown past by the air stream are returned to the body surface. The principal advantage of electrostatic painting is the "wrap-around" effect. When painting next to an edge, such as on a deck lid, hood, or door, the paint particles actually will wrap around and paint the backside due to the strong electrostatic attraction.

Phosphate Coating
First Primer—Epoxy
Second Primer—Epoxy
First Finish Coat
Second Finish Coat
Final Finish Coat ("Electrostatic" Painting)



BODY INSULATION

The insulation and sound proofing package of the 1972 Torino provides an effective sound barrier against road and engine noise.

- (1) The hood has mastic adhesive spotted between the inner and outer panel construction. Gran Torino and Squire models have a one-inch fiberglass pad on the underside of the hood.
- (2) Front fenders have a sound deadening coating sprayed on inner housings, including fender openings.
- (3) The dash absorber construction on the Torino consists of 1" thick fiber pad covered with a polyethylene skin. On the Gran Torino and Squire, the dash absorber construction consists of a 1/2" thick fiber pad, a one-pound mastic barrier and a 1/2" thick fiber pad covered with a polyethylene skin.
- (4) Cowl top is insulated with 3/4" fiber pad. Cowl side panels consist of a one-pound mastic sheet and a 1/4" fiber pad with crepe side cemented to sheetmetal on Gran Torino and Squire models.
- (5) The instrument panel on the Gran Torino and Squire models has a 1/2" fiber pad.

- (6) The front floor area on all Gran Torinos and Gran Torino Squires has two layers of one-pound mastic sandwiching a layer of 28-gram fiber pad. A thick jute pad is also bonded to the floor covering. All other models have a layer of one-pound mastic plus the jute pad.
 - (7) The insulation used on the rear floor is the same as that used on the front floor.
 - (8) Under the rear seat is one pound mastic sound deadener on Gran Torinos and Gran Torino Squire models.
 - (9) Door and quarter panels have sprayed-on sound deadener on the inner surface of the outer panels.
 - (10) All two-door and four-door Hardtops use a two-ply felt pad back of the rear seat.
 - (11) The package tray is insulated with a foam absorber.
 - (12) Roof panels and rear pillars are insulated with 3/8" fiber pads. Rear pillar insulation consists of a 3/16" fiber pad, a chip board barrier and another 3/16" fiber pad covered with a polyethylene skin.
 - (13) Rear wheelhouse splash areas are sprayed with sound deadener coating.
- Station Wagons also have insulation over the quarter wheelhouses, rear floor over axle, rear floor sides and deep well.

TORINO FEATURES

Body Features (Cont'd)

BODY SEALING MATERIAL

Following are some of the joint sealers and special anti-squeak sealing devices used in the new Torino to help assure a comfortable, quiet ride.

Special plastic sealing material applied to exposed spot-welded panel seams and joints.

Vinyl-plastic sealer used at the drip rails and rear deck trough.

Windshields are sealed with butyl tape.

A special non-drying plastic seal is used in conjunction with the weatherstrip on all backlites.

Special pads, grommets, seals and plug buttons guard against water, dust and drafts.

Heat-curing sealer applied to all other panel seams and joints.



HOOD

An "H" type brace for rigidity is a feature of Torino's double-panel hood construction. Counterbalanced double link hinges make the hood easy to open and close. Heavy coil springs assist in raising the hood and in holding it open for access to the engine compartment.

Rubber bumpers along the front and sides of the hood provide cushioning against squeaks and rattles. The bumpers are adjustable for leveling the hood with the front fenders. A single-lever hood latch mechanism permits one-hand opening.

GRILLE

The 1972 Torino Series Four-Door Pillared Sedan, Hardtop and Station Wagon grilles are plastic formed into an egg crate design. The grille extends from framing the outer headlights across the front area and is painted argent.

The high series including the Gran Torino, Gran Torino Sport, and Squire station wagons have a unique plastic honeycomb grille with a bright egg crate leading edges. The grille shape is a distinctive flattened oval between the horizontal pairs of headlights framed in bright headlight doors.



LUGGAGE COMPARTMENT

The usable luggage capacity in Torino Pillared Hardtops and two-door Hardtops is 14.8 cubic feet. The SportsRoof model has 16 cubic feet of usable luggage capacity. Built-in torsion bars in the trunk lid hinges assist in raising the lid and in holding it open. Compression type, neoprene rubber weather stripping provides protection against dirt and moisture. A luggage compartment light is available as part of the optional Visibility Group.

LIGHTING HEADLAMPS

All 1972 Torino models have dual, exposed horizontal headlamps. Headlamp aim can be adjusted easily by inserting a screw driver into access holes below the headlamp.

PARKING LIGHTS

Parking lights on the new Torinos remain lit when the headlights are turned on and help provide maximum identification to oncoming drivers in the event a headlamp is burned out. They have dual-filament bulbs and function as the front turn indicators and warning lights.

TORINO FEATURES

MARKER LIGHTS

The 1972 Torino models feature front and rear side marker lights with reflective lenses. They are controlled by the same circuit as the parking lights.

TAILLAMPS

All models except Station Wagons have two horizontal taillamp assemblies mounted within the outer ends of the bumper. A square clear lens located inboard and equally spaced from the upper, lower and inboard edge of the assembly lens serves the backup light.

The station wagons have the taillamp assembly in a vertical configuration similar to the Ford Station Wagons. A bright bar divides the upper and lower sections of the assembly. The clear backup lens is centered in the lower portion of the assembly.

HAZARD WARNING FLASHER

All 1972 Torinos are equipped with hazard warning flashers which are activated by a switch on the steering column to simultaneously flash the parking lights and taillights.



CONCEALED WINDSHIELD WIPERS

Two-speed electric windshield wipers are standard on all Torinos. Concealed wipers—standard on all Gran Torino, Gran Torino Sport and Squire models, optional on Torino series—are designed to "park" in a recessed area below the cowl.

The windshield glass extends into the recessed area so that the wiper blades are in constant contact with the glass, even in their concealed position. This "constant contact" feature helps provide longer wiper blade life.

WINDOWS

All models of the new Torino line feature modern, ventless side glass.

SportsRoof model features tinted glass in the rear window as standard equipment.

All windows, except windshields are high-strength, impact-resistant, heat-tempered glass. Windshields are made of two sheets of glass sandwiched to a 30-mil-thick plastic sheet and heat laminated together.



DOORS

Torino doors are formed into a warp-free, sturdy box unit by using a double panel, welded construction. Bronze-bushed hinges are used for long wear and easy opening and closing. The lower hinges incorporate assist springs to aid in opening the door and to retard slamming when closing. All front doors incorporate check straps to provide an intermediate door check position to aid entry and exit when the car is parked in close quarters. Bear-hug door latches increase rattle resistance and provide easy opening and secure closing operation. They also help protect against accidental opening on impact. All side doors also feature a new steel "Guard Rail." See Side Impact Protection System, Page 15.

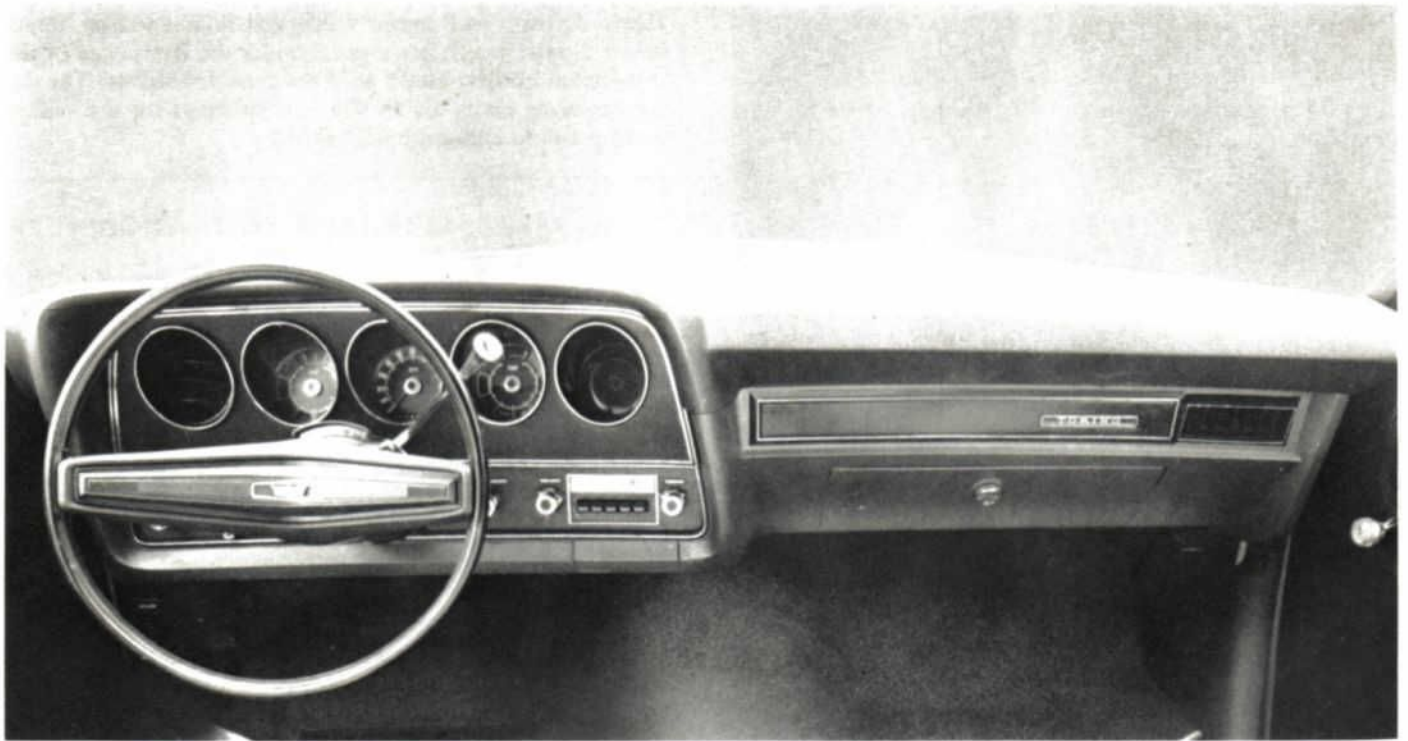
DOOR HANDLES AND ARM RESTS

Torino's new exterior handles are pull-out type, mounted flush with the door surface. An unframed depression in the door panel provides finger room.

One step locking is standard on all side doors. The doors may be locked from the outside by simply depressing the inside door lock control knob, and then closing the door. With the incorporation of the outside flush door handles, the need to depress a push-button for locking is no longer required.

The inside door pull handle is formed as an integral part of the armrest. The operating handle is a "paddle-shape" and actuates the door latch when pulled outward with the fingertips. The design provides protection against accidental opening by passengers.

TORINO FEATURES



INSTRUMENT PANEL

The 1972 Torino Instrument Panel construction utilizes the best characteristics of both steel and plastic to provide energy absorbing capability. ABS plastic is framed on sheet metal and covered by a one-piece injection molded energy absorbing facing with a leatherlike vinyl texture. The vinyl pad is color-keyed to the trim selection. A large glove box with an ABS and safety-type twist open latch is placed on the right side.

The control panel in front of the driver contains a row of pods which house the following:

The center pod is the speedometer. The next left pod contains the fuel gauge, left turn signal, high beam and alternator warning light. The pod to the right of center houses the temperature gauge, brake warning system light, the oil pressure warning light and the right hand turn signal. The extreme left hand pod is the DirectAire ventilating duct and the right hand pod is a provision for an optional electric clock.

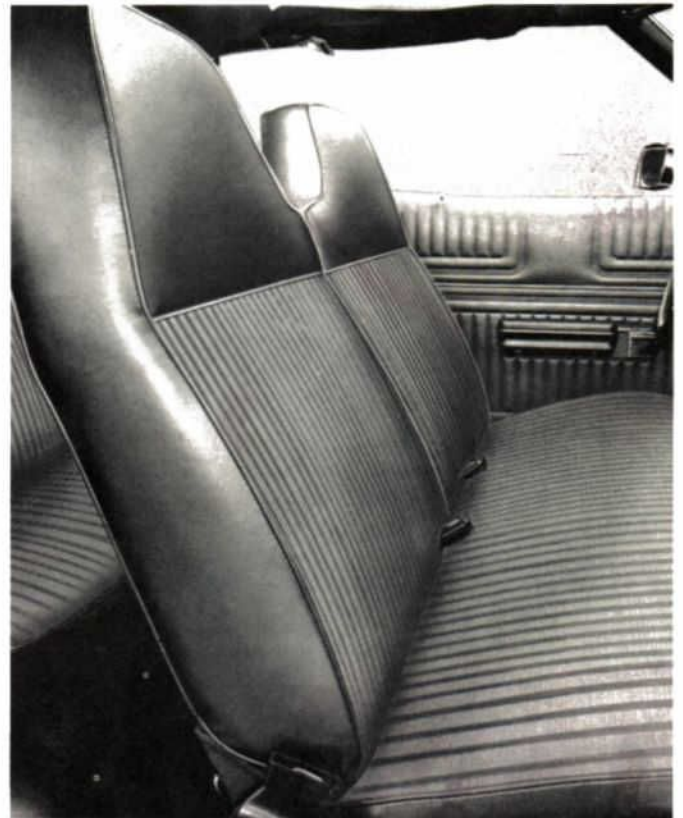
The section of the panel on the left of the steering column contains the light switch and heater controls. The windshield wiper/washer switch and radio are to the right. The ash tray with a hidden cigarette lighter is below the radio.

SEATS

New, sculptured high back bench seats are standard on all 1972 Torinos and are designed to provide extra body support and superior comfort. The seat backs at the right and left are approximately eight inches higher, eliminating the need for separate head restraints. Seat springs are attached to a rugged welded frame foundation. A burlap pad with interwoven wires is placed over the springs to provide a strong, yet smooth base for the seat padding. Front seats are covered with a two-and-one-half-inch thick molded urethane foam pad. Rear seat cushions are constructed of

extra heavy layers of cotton, except for Station Wagons which have a cotton and foam padding combination.

Folding front seat backs on all 2-door models self-lock into an upright position. A convenient lever on the side of the seat back releases the lock for rear seat passenger entry and exit.



Automatic seat back releases, available with the optional deluxe seat belts on 2-door models, automatically release the seat backs when the doors are opened.

TORINO FEATURES



"UNI-LOCK" SAFETY HARNESS

The 1972 Torinos include a "Uni-Lock" three-point safety harness for the outboard front seat passengers on all models. This design eliminates the two shoulder harness buckles on the seat and permits easier and faster "buckle up". During use, the driver or outboard front seat passenger pulls the belt out of the retractor and "snaps" it into the buckle—the lap belt length is automatically maintained by the retractor. The shoulder belt is then attached to the lap belt buckle and adjusted as necessary.

All 1972 Ford cars include seat belt retractors at the front (and rear*) outboard seating positions. In the front, the retractors form part of the seat belt reminder system. In the rear, the retractors are hidden below the seat and a belt guide is located between the seat and trim panel.

SEAT BELT REMINDER SYSTEM

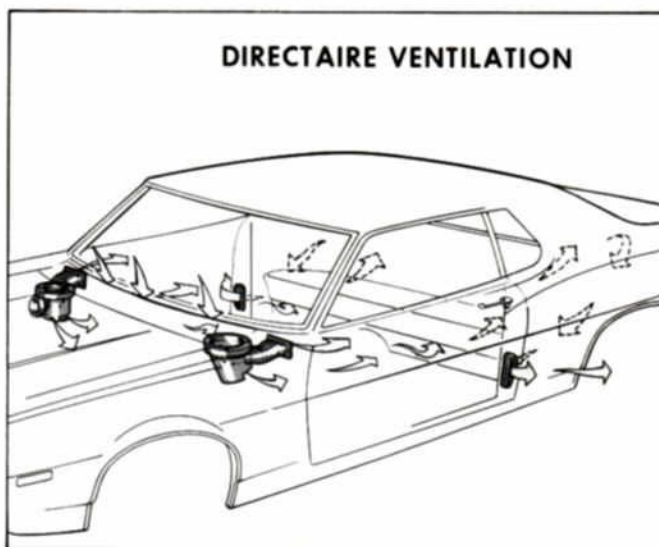
New for 1972 is a positive front seat belt reminder system. (*) This system includes a light and buzzer mounted in the instrument panel which are activated by sensors if an attempt is made to drive the car without the driver and front seat passenger (if aboard) first fastening their seat belts. The light and buzzer operate when the ignition switch is in the "On" position, the transmission is in any forward or reverse position and the driver's belt is not extended the distance normally used for fastening. If the right outboard seat is occupied, a switch in the seat also activates the system until the passenger seat belt is pulled out the specified distance. When the belt or belts are extended, the light and buzzer go off, and will remain off unless the belts are retracted.

(*) December, 1971 availability.

HEATING

Torino's high capacity heater uses the blend air principle of temperature control. Temperature is controlled by regulating the amount of air that passes through the heater core.

Heat, defrost, and temperature controls, and the three-speed blower switch are located under the front edge of the instrument cluster within easy reach of the driver. The defroster lever ducts air to slit-type openings on the instrument panel to defog the windshield.



VENTILATION

Standard in all Torinos for '72 is DirectAire ventilation. This system provides air flow through the vehicle with the windows closed. The DirectAire system provides for both high and low outlets in the front compartment and Flow-Thru pressure relief one way exhaust valves in the door lock pillars.

With "DirectAire", two fully-adjustable air registers, one in each end of the instrument panel, are used. Also there are two outlets directed toward the toe board. These are the same registers as are used with the optional SelectAire air conditioning system. Air flow from the registers can be adjusted by rotating the barrel on the left or by moving the louvers on the right side of the instrument panel, or by directing the register up or down. The air can be shut off by moving the louver control to the extreme right. The distribution of air can also be controlled between the panel registers and the floor directed outlets by a pull rod.

With this ventilation system, air can enter from the concealed front intakes . . . circulate throughout the interior . . . and exit, carrying away stale or smoke-laden air . . . without any need to open a window.

FUSE PANEL

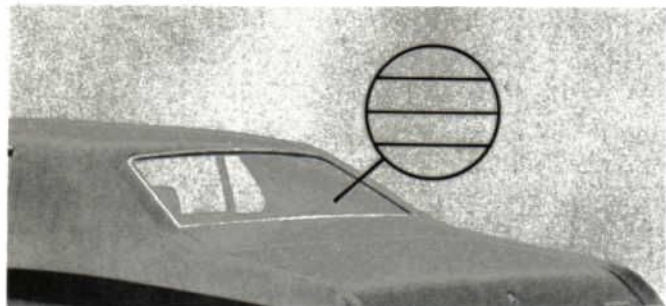
A new fuse panel is included with the all new Torino line designed to hold eleven fuses—four more than previously. This permits the maximum number of circuits used per fuse to two, increasing overall electrical system reliability. The extra fuse location also simplifies diagnostic testing of the electrical system.

BUMPER JACK SYSTEM

The 1972 Torinos are equipped with a new pin and slot bumper jack system. The new design eliminates the hook that normally connects to the bottom of the bumper. Instead, a flat pin, integral with the ratchet mechanism, fits into slots pierced into the bumper. The new system provides faster, simpler operation with more positive retention.

TORINO OPTIONS

Torino offers a wide variety of factory installed options which are described here in detail and/or are listed on Pages B-25-26. Owners can select from these items to equip their car to suit their personal tastes.



REAR WINDOW ELECTRIC DEFROST

This "Better Idea" option helps keep the backlite frost-free and will remove snow, frost, and up to 1/8-inch of ice in minutes. An increase of more than 50% in the watt output per square inch of glass area reduces the time required to defog the glass interior and provides more positive ice and snow melting capabilities. The heating unit is turned on by the "Accessory" switch on the instrument panel and consists of a silver-filled, ceramic, high-resistance printed electrical circuit, silk-screened onto the inside of the backlite. While visible as a series of 1/32-inch wide lines across the full width of the backlite, the unit does not interfere with the driver's rear vision due to the wide spacing between the lines and a new subdued less conspicuous dark red color. The new improved rear window electric defrost is available on all passenger cars with V-8 engines. On two-door hardtops and four-door pillared hardtops, there are 12 grids on the glass, while on the SportsRoof there are 18 grids.

A timer prevents prolonged usage by automatically turning off the system after ten minutes operation. The option also includes a 55, 61 or 65-amp. alternator depending on model and equipment. A 73 ampere-hour battery is included on models equipped with air conditioning.

POWER DOOR LOCKS

This new convenience option features a new all-electric operation. The door lock buttons actuate switches connected to electric motor driven servos in the doors. Raising either button unlocks all doors and lowering either button locks all doors. On station wagons, this option also includes a power lock for the doorgate.

DOOR EDGE GUARDS

Attractive door edge guards, which are available on all models except the Gran Torino Squire, are designed to protect the door edges from scratches and paint chips when opening doors in parking lots and other tight quarters.



RAM AIR HOOD SCOOP

This high performance option is available on Gran Torino Hardtop or Gran Torino Sport models equipped with 351

CID 4v or 429 CID 4v engines. The functional ram-air hood scoop registers with a unique air cleaner assembly. The special air cleaner assembly has a vacuum-actuated bypass inlet valve mounted in the top which opens when the engine is operated at nearly full throttle and allows additional air to flow directly into the air cleaner assembly from outside the engine compartment. High-speed, high rpm operation results in a ram- or forced-air effect which assists in developing added horsepower.



400 CID 2V V-8 ENGINE

For exceptional power and good economy, Ford's 400 CID 2v V-8 is available on all Torino models for '72. This proven engine offers Ford's latest features including long-stroke design, compact combustion chamber, electronic carburetor deceleration control and large canted valves. Option includes 73-ampere hour heavy duty battery.

"TRACTION-LOK" DIFFERENTIAL

Beneficial to family and performance cars alike, Ford's "Traction-Lok" differential is designed to lock the rear wheels together in proportion to the driving torque applied. Some of the major benefits of this option are: Extra traction on ice, mud or snow, and maximum accelerating power. (See the Power Teams section for more information.)

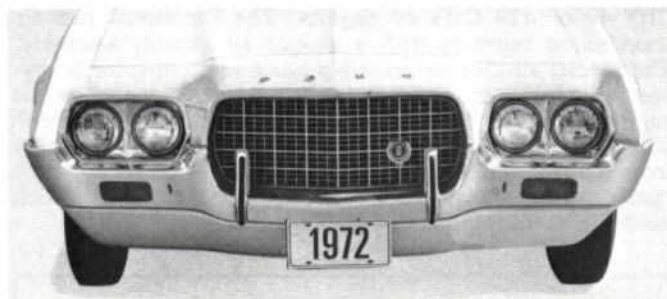
4-SPEED TRANSMISSION WITH "HURST SHIFTER"

Designed to provide the ultimate in driving flexibility and performance, this transmission's four ratios are properly spaced to fit the engine's power curve. The transmission's rugged construction allows extended operation in any ratio, such as using third gear for cruising on hilly, winding roads. The floor-mounted "Hurst Shifter" is indexed for fast, sure shifting, lending itself to competitive events. Fully-synchronized wide ratio gears permit positive, split-second upshifts and downshifts at all reasonable engine speeds. The unit is standard with the Rallye Option and available on Torino cars with the 351 CID 4v engine only.

SIX-WAY POWER BENCH SEATS

A new six-way power bench seat option is available on all Torino models for '72, in place of the former 4-way option. Three control switches on the driver's side adjust the seat up and down—forward and back—and tilt fore and aft. This luxury option permits easy selection of the most comfortable driving position while the car is in motion.

TORINO OPTIONS



BUMPER GUARDS

Attractive and functional, Torino's new optional bumper guards help prevent bumper override and damage to sheet metal during minor collisions. Heavy chrome-plating and vertical rubber inserts provide a durable scratch resistant surface for the bumper guards. The option includes both front and rear guards on all models except station wagons which receive front guards only.

INTERMITTENT WINDSHIELD WIPERS

These optional wipers can be adjusted to provide a pause between each wiping cycle. The length of the pause may be controlled by the driver from two- to ten-seconds, depending on the amount of precipitation, car speed or traffic conditions. Continuous high-speed operation is automatically provided during acceleration. The intermittent feature may be by-passed for the regular two-speed operation.



HIGH BACK BUCKET SEATS

These modern, comfortable high back bucket seats are optional on Gran Torino 2-door and Gran Torino Sport models. The option includes both solid colors and tu-tone colors. Ford's "Comfortweave" knitted vinyl is the standard insert material. For 1972, seats are available in striking color combinations of black, blue, green or tobacco, highlighted with white. Seat trims are also available in solid colors. "Comfortweave" lets air circulate through the material and is cooler in the summer and warmer in the winter than conventional vinyl seating. The high seat backs are designed to serve as integral head restraints.



BROUGHAM INTERIOR TRIM GROUP

This new trim group offers extra luxury, comfort, and convenience to Gran Torino 2-door hardtop and four-door pillared hardtop models. Included is a plush flight bench front seat with highly attractive cloth seat trim, padded fold-down center arm rest, woodtone instrument panel, electric clock, bright pedal pads, woodtone two-spoke steering wheel and an attractive "C" pillar ornament.

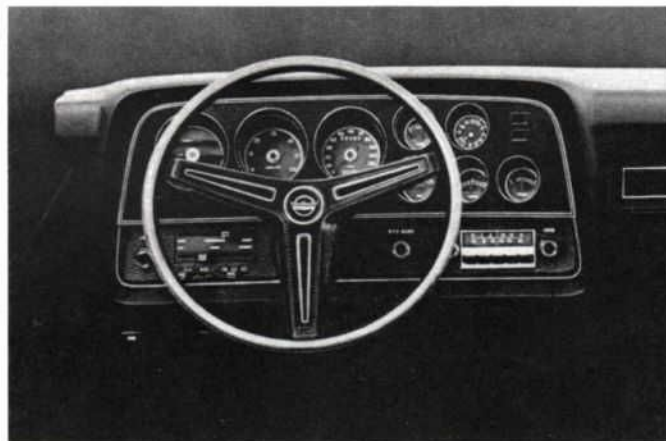
SPECIAL SEAT TRIMS

Several other highly attractive, comfortable and durable seat trims are available for '72. A smart, knitted vinyl seat trim is optional on Gran Torino and Gran Torino Squire Station Wagons. A deep-pleated vinyl seat trim option is available on Gran Torino Hardtop models, while a sport cloth trim is available on Gran Torino 2-door and Gran Torino Sport models.

SELECTAIRE AIR CONDITIONING

The Torino SelectAire air conditioning unit, including controls, is fully integrated into the instrument panel and provides temperature and humidity controlled comfort with all windows closed.

The three-speed blower motor and two air conditioning positions give this unit maximum versatility. By placing the select lever on "PANEL", air is circulated through vents in the instrument panel. A position between "PANEL" and "FLOOR" directs air through both the instrument panel vents and floor vents. A temperature control lever enables the operator to select the desired temperature.



INSTRUMENTATION GROUP

Driving enthusiasts will find Torino's Instrumentation Group to their liking. This group, which is available on eight cylinder models only, adds tachometer, trip odometer, engine gauges (OIL, AMP, TEMP and FUEL) plus an electric clock to the Torino's instrument cluster.

TORINO OPTIONS

RALLYE EQUIPMENT GROUP

The Rallye Equipment Group is also packaged for the driving enthusiast. Offered on two-door models, the package includes popular performance equipment including 351 CID 4V V-8, four-speed manual transmission, competition suspension, G70 x 14 wide oval belted B/WL tires 6" wide rims and the Instrumentation Group. Rallye Equipment Group is also available with 429 CID 4V engine and Select-Shift Cruise-O-Matic transmission at extra cost.

VISIBILITY GROUP

A new addition to Torino's Visibility Group is a convenient dome/map light unit in the roof. Two individually activated miniature map lights on either side of the dome light shine over the shoulders of driver and front seat passenger. Other features of the Visibility Group include outside left-hand remote control mirror, ash tray light, glove compartment light, luggage compartment light (cargo light on station wagons) instrument panel courtesy light, engine compartment light, rear door courtesy light switches (4-door models), headlights "lights-on" warning buzzer, parking brake warning light, seat belt warning light (+) and flood lighting of light and wiper switches.

AM RADIO

Torino's new "mini" size AM radio option features new, more reliable circuitry and improved reception. The new radio has a power output increase from two to four watts.

AM/FM STEREO RADIO

Torino's new "mini" size AM/FM stereo radio includes a completely new circuitry with increased sensitivity for retaining weak signals. The power output is increased from three to four watts to increase overall clarity and tonal range. The AM/FM stereo radio allows a choice of AM or FM stereo reception merely by moving the function selector switch. Stereo multiplex operation is indicated by an amber light on the radio faceplate. "5 x 10" push button feature allows the five push buttons to be preset to provide five AM and five FM stations. Balance and fader controls allow exact blending of sound from the four-speaker system. Two front speakers (one in each front door) and two package tray mounted rear speakers are included with the new AM/FM Stereo Radio.

COLOR-GLOW PAINTS

Two new optional "Color-Glow" metallic paints are available on the new 1972 Torino in Ivy Glow and Gold Glow which create the illusion of extra depth due to the control and size of the aluminum particles in the special paint formula. The clarity and transparency of the highly durable surface also contributes to the distinctive characteristics of these glamorous new finishes.

LASER TAPE STRIPE

A unique design "Laser" tape stripe is offered as an option on Gran Torino 2-door and Gran Torino Sport models in red, blue, green and brown colors.



The tape stripe starts at the front fender extension and blends into the rear quarter panel. It is not available with the optional vinyl insert body side moulding.

VINYL ROOF

This option adds to the luxury appearance of Torino and provides a "customized" color-keyed accent to interior and exterior color and trim combinations. The vinyl roof is available in five colors on all Torino models except wagons. (See page B-30 for vinyl roof trim combinations.)

TRAILER TOWING PACKAGES

Torino for '72 offers two new trailer towing packages. A medium-duty package for Class II (up to 3500 pounds trailer weight with a maximum tongue load of 500 pounds) and a heavy-duty package for Class III (up to 6000 pounds trailer weight with a maximum tongue load of 700 pounds).

The Medium-Duty package includes heavy-duty suspension, extra-cooling package, wiring harness, and trailer towing identification. (See the options listing on page B-26 for component description.)

The Heavy-Duty package includes heavy-duty suspension, extra-cooling package, wiring harness, trailer towing identification, high ratio axle, heavy-duty alternator, and heavy-duty battery. (See options listing on page B-26 for component description. Also see Trailer Towing Warranty Statement, page iii.)



BASE WHEEL COVER

This rust-resistant full wheel cover is standard on Gran Torino Squire models. It is available as an option on all other models except the Gran Torino Sport.

DELUXE WHEEL COVER

The deluxe wheel cover is available as an option on all models.

(+) Seat belt warning light to become part of standard seat belt reminder system. (December, 1971 availability.)

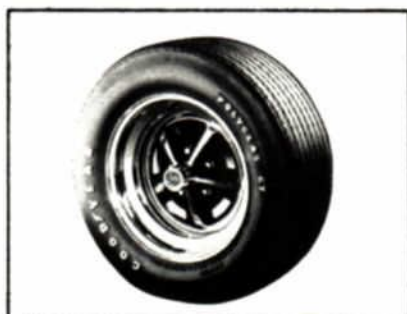
TORINO OPTIONS

TRIM RING/HUB CAP



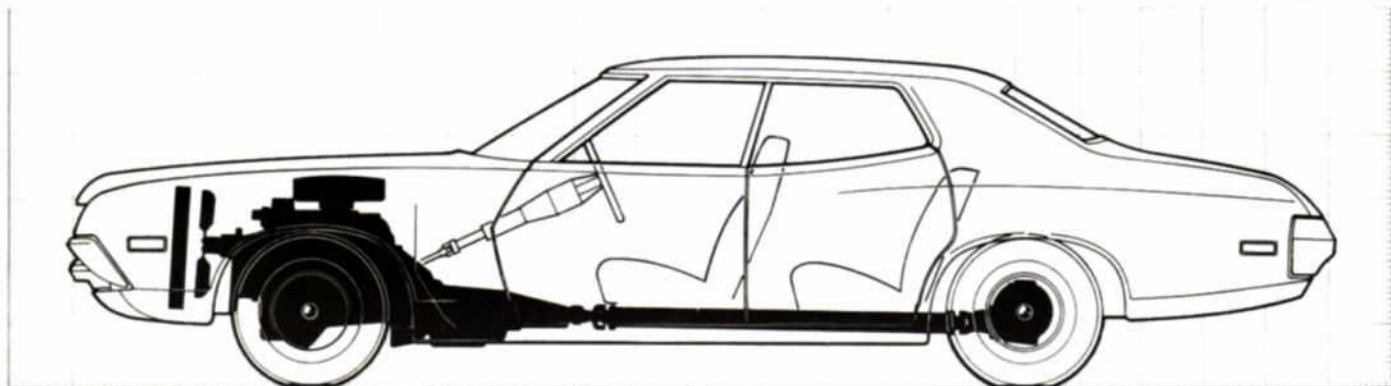
The "action-styled" trim ring/hub cap combination is standard on the Gran Torino Sport and optional on all other models except Station Wagons. Available only with wide-oval tires.

MAGNUM 500 STEEL WHEEL



This racey-looking 14" Magnum 500 chrome-plated wheel is available with all 14" tires.

TORINO PERFORMANCE



An all-new power team line-up headlines Torino's performance story for 1972. There's a choice of six engines, three transmissions and four rear axle ratios plus an optional "Traction-Lok" differential—available in combinations to suit virtually all driving requirements.

ENGINES

The dependable and economical 250 CID six-cylinder engine is the standard power plant for Torino and Gran Torino models. The rugged 302 CID engine is Torino's base V-8 engine and is standard in the Gran Torino Sport and Gran Torino Squire models. The popular and powerful 351 CID 2V V-8 is available in all Torino models for '72. For the performance enthusiast, the 351 is also available in a new, more powerful design level. This special high revving version of the 351-4V engine with performance components, including a high-capacity four-barrel carburetor, is available in two door models only and is included with the Rallye Equipment Group.

For all-around good performance and economy of ownership, the 400 CID 2V has been added to the Torino complement of power plants for 1972. And for the ultimate in power and performance, Torino offers the big 429 CID 4V V-8.

Like all Ford Division engines for '72, these power plants have more effective emission controls and run on regular fuel of at least 91 octane, based on research octane number.

TRANSMISSIONS

Ford's proven three-speed manual transmission is standard on all Torino models. The fully-synchronized, constant-mesh design of this transmission means dependable performance and easy shifting.

Optional transmissions include:

The popular SelectShift Cruise-O-Matic transmission which offers a choice of manual shifting or completely

automatic operation. The Cruise-O-Matic can be up-shifted or down-shifted at various speeds for excellent driver control under adverse road or weather conditions. New for 1972 are larger, higher capacity oil coolers to provide additional protection against overheating during heavy duty usage, such as trailer towing.

The four-speed manual transmission with a "Hurst Shifter®" provides "take-off and go" qualities unsurpassed in the industry. Synchronized in all forward gears, this transmission is well-suited to the performance-minded driver and is standard with the Rallye Equipment Group. Available only with 351 CID 4V V-8.

(Refer to Power Teams section for more information.)

FLOOR SHIFTS

Floor shifts are available as follows:

- 4-speed transmission with "Hurst Shifter®."
- Automatic transmissions in conjunction with the optional console . . . 2-door models only. High back bucket seats are also a part of the option.

These floor shifts are mounted in a Console which is available only with high back bucket seats on Gran Torino 2-door hardtop and Gran Torino Sport models. See options availability Page B-25.

MANEUVERABILITY

Maneuverability for the all new Torino is outstanding. This is especially true for two-door models with new, shorter 114-inch wheelbase combined with a new, wider 62.8-inch (63.4-inch on Gran Torino Sport) front tread. This design provides a short curb-to-curb turning diameter of only 41.0-ft.—1.5 feet shorter than previously for outstanding maneuverability. Torino four-door models with their longer 118-inch wheelbase match last year's Torino in curb-to-curb turning diameter and mean excellent maneuverability for four-door models.

TORINO OPTIONS AVAILABILITY

DESCRIPTION	AVAILABILITY*		DESCRIPTION	AVAILABILITY*	
	R P O	D L R		R P O	D L R
APPEARANCE EQUIPMENT					
Bumper Guards, Front and Rear (front bumper guards only on station wagons.)	X	X	combination with three-speed manual transmission. Torino and Gran Torino station wagon models ordered with this option require power front disc brakes at extra cost. Tinted Glass—complete recommended.)	X	
Color-Glow Paints (Available on Ivy Glow and Gold Glow.)	X		Steering Wheel, Rim Blow—Deluxe Three-Spoke	X	
Console (Available only with high back bucket seats on Gran Torino 2-door hardtop and Gran Torino Sport models.)	X		Visibility Group (Includes outside left-hand remote control mirror, ash tray light, dome/map light, glove compartment light, luggage compartment light, cargo light on station wagons, instrument panel courtesy light, engine compartment light, rear door courtesy light switches on 4-door models, headlights "lights-on" warning buzzer, parking brake warning light, seat belt warning light (†) and flood lighting of light and wiper switches.)	X	
Door Edge Guards (N/A on Gran Torino Squire.)	X	X	Windshield Wipers, Intermittent (Torino Series models ordered with this option require concealed windshield wipers at extra cost.)	X	
Laser Stripe (Available only on Gran Torino 2-door and Gran Torino Sport models. Not available with vinyl insert body side protection moulding or special paint. Standard body side moulding deleted when laser stripe is ordered.)	X		Windshield Wipers, Concealed (Option available only on Torino Series models. Standard on all other models.)	X	
Moulding with Black Vinyl Insert Body Side (N/A on Gran Torino Squire or with Laser Stripe.)	X		ENGINES		
Roof, Vinyl (N/A on station wagon models.)	X		302 CID 2V 8-Cylinder (Standard on Gran Torino Sport and Squire.)	X	
Trim Group, Brougham Interior (Includes flight bench seats with cloth seat trim and fold-down center front arm rest, woodtone instrument panel, electric clock, bright pedal pads, woodtone two-spoke steering wheel, and "C" pillar ornamentation. Available only on Gran Torino Hardtop models. N/A with Rallye Equipment Group.)	X		351 CID 2V 8-Cylinder (Requires Cruise-O-Matic transmission at extra cost.)	X	
Trim, Knitted Vinyl Seat (Available only on Gran Torino and Gran Torino Squire station wagon models. Included with high back bucket seats.)	X		351 CID 4V 8-Cylinder (Includes 55 ampere alternator, 55 ampere-hour battery, special intake manifold, special valve springs with dampers, large capacity 4300-D carburetor, 2½ inch diameter dual exhaust outlets, modified camshaft, and four-bolt main bearings caps. Available only on 2-door models. Included with Rallye Equipment Group. Requires SelectShift Cruise-O-Matic or wide ratio four-speed manual transmission at extra cost.)	X	
Trim, Pleated Vinyl Seat (Available only on Gran Torino Hardtop models.)	X		400 CID 2V 8-Cylinder (Includes 73-ampere heavy-duty battery. Requires Cruise-O-Matic transmission at extra cost, and power steering at extra cost on models equipped with air conditioner or rear window electric defrost. Also, power front disc brakes required at extra cost on Torino and Gran Torino Station Wagon models. N/A with Rallye Equipment Group.)	X	
Trim, Sport Cloth (Available only on Gran Torino 2-door and Gran Torino Sport models.)	X		429 CID 4V 8-cylinder (Includes 73 ampere-hour heavy duty battery. Requires Cruise-O-Matic transmission and power front disc brakes at extra cost. Also requires power steering at extra cost on models equipped with air conditioner.)	X	
Trim Rings/Hub Caps (Available only with wide oval tires. N/A on station wagons. Standard on Gran Torino Sport models.)	X	X	PERFORMANCE EQUIPMENT		
Wheel Covers (N/A on Gran Torino Sport models. Gran Torino Squire.)	X	X	Axle, Optional Ratio (N/A in California on models equipped with 302 CID 2V engine in combination with Cruise-O-Matic transmission.)	X	
Wheel Covers, Deluxe	X	X	Axle, "Traction-Lok" Differential	X	
Wheels, Magnum 500 Chrome	X	X	Hood Scoop, Ram Air (Includes functional integral air scoop. Available only on Gran Torino Hardtop or Gran Torino Sport models equipped with 351 CID 4V, Early 1972 availability or 429 CID 4V engine.)	X	
AUDIO EQUIPMENT			Rallye Equipment Group (Includes 351 CID 4V 8-Cylinder engine, four-speed manual transmission, competition suspension, G70 x 14 wide oval belted B/WL tires with 6" wide rims and Instrumentation Group. Available only on 2-door models. Not available with electric clock option or Brougham interior group. SelectShift Cruise-O-Matic and 429 4V engine available at extra cost.)	X	
Radio, AM (Mini)	X	X	POWER ASSISTS		
Radio, AM/FM Stereo (Mini)	X	X	Power Door Locks, Electric (Includes rear door lock on wagons.) Dec. 1971 availability.	X	
Speakers, Dual Rear Seat (Included with AM/FM stereo radio. Requires AM radio at extra cost.)	X	X	Power Front Disc Brakes (Standard on Gran Torino Squire model. Required at extra cost on Torino and Gran Torino Station Wagon models equipped with air conditioner or any optional engine. Also, required at extra cost on models equipped with 429 CID 4V engine.)	X	
COMFORT-CONVENIENCE EQUIPMENT			Power Seat—6-Way Full Width	X	
Belts with Warning Light, Deluxe (Includes automatic seat back release on 2-door models (†).)	X		Power Side Windows	X	
Clock, Electric (Included with Instrumentation Group Rallye Equipment Group, and Brougham Interior Trim Group.)	X		Power Steering (Required at extra cost on models equipped with 400 CID 2V or 429 CID 4V engine in combination with air conditioner or 400 CID 2V engine in combination with rear window electric defrost.)	X	
Electric Defrost, Rear Window (Available only on Hardtop and Pillared Hardtop models equipped with 8-cylinder engine. When ordered with 400 CID 2V engine requires power steering.)	X		Power Tailgate Window (Available only on station wagons.)	X	
Glass, Tinted (Recommended with air conditioner.)	X		* Early 1972 availability		
Instrumentation Group (Includes tachometer, trip odometer, engine gauges (Oil, Amp, Temp, Fuel), and electric clock. Available only with 8-cylinder engine. Included with Rallye Equipment Group. N/A with Brougham Interior Trim Group.)	X		Revised 10/71 B-25		
Luggage Rack, Deluxe (Includes integral rear window air deflector, glass bead texture finish on panels, and adjustable rear cross bar. Available only on station wagons.)	X				
Mirror, Outside Color-Keyed Dual Racing (Includes left-hand remote control and right-hand manual control mirrors. Standard on Gran Torino Sport models. Not available with special paint.)	X	X			
Seats, High Back Bucket (Includes tu-tone knitted vinyl trim and carpet/mat combination. Available only on Gran Torino 2-door hardtop and Gran Torino Sport models.)	X				
Seat, Rear Facing Third (Available only on Gran Torino and Gran Torino Squire station wagons.)	X				
Select Aire—Air Conditioner (N/A on station wagons with 250 CID 1V engine, or with 250 CID 1V engine in	X				

TORINO OPTIONS AVAILABILITY

DESCRIPTION	AVAILABILITY*		DESCRIPTION	AVAILABILITY*	
	R P O	D L R		R P O	D L R
TIRES					
(See Page B-24 for model availability.)					
E78 x 14 belted WSW	X	X	Suspension, Heavy Duty Load (Includes heavy-duty front and rear springs and shock absorbers on sedans and hardtops. Included with trailer towing package. Not available with Rallye Equipment Group.)	X	
F78 x 14 belted BSW	X	X	Trailer Towing Package—Class II (Includes heavy-duty load suspension, extra-cooling package, wiring harness, and rear window trailer towing identification decal. Requires 351 CID 2V or larger engine, Cruise-O-Matic transmission, and power steering and power front disc brakes at extra cost.)	X	
F78 x 14 belted WSW	X	X	Trailer Towing Package—Class III (Includes heavy duty battery, heavy duty alternator, heavy duty frame (except station wagons), heavy duty suspension, extra cooling package, trailer wiring harness, 3.25 rear axle ratio and rear window trailer towing identification decal. Requires 400 CID 2V or larger engine, Cruise-O-Matic transmission, power steering, power front disc brakes and G78 x 14 or larger tires at extra cost.)	X	
E70 x 14 belted wide oval WSW	X	X	NOTE: SEE TRAILER TOWING WARRANTY STATEMENT PAGE iii.		
F70 x 14 belted wide oval WSW	X	X	TRANSMISSIONS		
G78 x 14 belted BSW	X	X	SelectShift Cruise-O-Matic	X	
G78 x 14 belted WSW	X	X	Four-Speed (Wide Ratio) Manual with Hurst Shifter* (Available with 351 CID 4V only. Not available with station wagons. Included with Rallye Equipment Group.)	X	
G70 x 14 belted wide oval B/WL	X	X	*RPO—Regular Production Option.		
H78 x 14 belted BSW	X	X	DLR—Dealer Installed Accessory.		
H78 x 14 belted WSW	X	X	†Seat belt warning light to become part of standard seat belt reminder system. (December, 1971 availability.)		
TRAILER TOWING AND HEAVY DUTY EQUIPMENT					
Battery, Heavy-Duty—55 Ampere-hour (Available only with 250 CID (less air conditioner) or 302 2V. Included with 351 2V or 4V engines.)	X	X			
Battery, Heavy-Duty—73 Ampere-hour (Available only with 351 CID 2V or 4V engines. Included with 400 CID 2V and 429 CID 4V engines. Also included with 250 CID 1V with air conditioner and with Trailer Towing Packages.)	X	X			
Emission Control System, NOx Exhaust (Required in State of California; available elsewhere.)	X				
Suspension, Competition (Includes front and rear increased spring rates, rear stabilizer bar, heavy-duty front stabilizer bar, and heavy-duty shock absorbers. Available only on 2-door models equipped with 351 CID 4V or 429 CID 4V engine. Standard with Rallye Equipment Group.)	X				

TORINO GENERAL SPECIFICATIONS

1972 TORINO STANDARD TIRE AVAILABILITY

MODEL AND ENGINE APPLICATION	250-1V		302-2V		351-2V		351-4V		400-2V		429-4V	
	Non A/C	A/C	Non A/C	A/C	Non A/C	A/C	Non A/C	A/C	Non A/C	A/C	Non A/C	A/C
TORINO—4-Door	E78	E78	E78	F78	F78	F78	N.A.	N.A.	F78	G78	G78	G78
—2-Door	E78	E78	E78	E78	F78	F78	F78	F78	F78	G78	F78	G78
GRAN TORINO—2-Door	E78	E78	E78	F78	F78	F78	F78	G78	F78	G78	G78	G78
—4-Door	E78	E78	E78	F78	F78	F78	N.A.	N.A.	F78	G78	G78	G78
GRAN TORINO SPORT—Sports Roof	N.A.	N.A.	E70	F70	F70	F70	F70	G70	F70	G70	G70	G70
—Formal Roof	N.A.	N.A.	E70	F70	F70	F70	F70	G70	F70	G70	G70	G70
STATION WAGONS—Torino	G78	N.A.	G78	G78	G78	G78	N.A.	N.A.	H78	H78	H78	H78
Gran Torino	G78	N.A.	G78	G78	G78	G78	N.A.	N.A.	H78	H78	H78	H78
Gran Torino Squire	N.A.	N.A.	H78	H78	H78	H78	N.A.	N.A.	H78	H78	H78	H78

OPTIONAL TIRE AVAILABILITY

STANDARD TIRES*	OPTIONAL TIRES									
	E78	F78	F78	G78	G78	H78	H78	E70	F70	G70
	WSW	BSW	WSW	BSW	WSW	BSW	WSW	WSW	WSW	RWL
E78	X	X	X	X	X	X	X	X	X	X
F78			X	X	X	X	X		X	X
G78					X	X	X			X
H78							X			
E70									X	X
F70										X

*Optional tires are available as indicated with models having these tires as standard equipment.
A/C—Air Conditioning.

Note: • All of the above tires are belted bias ply construction with "B" load range. E78, F78, G78 and H78 tires are available with standard black sidewall and RPO white sidewall. E70 and F70 tires are standard white sidewall; G70 tires are standard raised white letter sidewalls.

• All models except station wagons using E78, F78, and G78 tires use 14 x 5 x .55 offset wheels standard; all station wagons use 14 x 5.5 x .25 offset wheels standard; all other tires use 14 x 6 x .25 offset wheels standard. Station wagons are restricted to .78 aspect ratio tires.

TORINO GENERAL SPECIFICATIONS

TORINO POWER TEAM SELECTIONS

Engine	TRANSMISSION			REAR AXLE RATIOS								
	3-Speed	4-Speed	Cruise-O-Matic	3-Speed Manual			4-Speed Manual			Cruise-O-Matic		
				Std.	Opt.	Traction-Lok	Std.	Opt.	Traction-Lok	Std.	Opt.	Traction Lok
ALL MODELS EXCEPT STATION WAGONS												
250 CID 1V** Six Std.	Std.	NA	(5) Opt.	3.00	NA	3.00	NA	NA	NA	2.79	3.00*	2.75 3.00*
302 CID 2V** V-8 Opt. (1)	Std.	NA	Opt.	3.00*	NA	3.00*	NA	NA	NA	2.79	3.00*	2.75 3.00*
351 CID 2V V-8 Opt.	NA	NA	(4) Opt.	NA	NA	NA	NA	NA	NA	2.75*	3.25*	2.75* 3.25*
351 CID 4V V-8 Opt. (2)	NA	Opt.	Opt.	NA	NA	NA	3.50	3.25*	3.25* 3.50	3.25*	3.50	3.25* 3.50
400 CID 2V V-8 Opt.	NA	NA	(4) Opt.	NA	NA	NA	NA	NA	NA	2.75*	3.25*	3.25* 2.75*
429 CID 4V V-8 Opt.	NA	NA	(4) Opt.	NA	NA	NA	NA	NA	NA	2.75* 3.00* (3)	3.25*	3.25* 2.75* 3.00*(3)
STATION WAGONS												
250 CID 1V** Six Std.	Std.	NA	(5) Opt.	3.25	NA	3.25	NA	NA	NA	3.00	3.25	3.00 3.25
302-CID 2V** V-8 Opt.	Std.	NA	Opt.	3.00*	3.25	3.00* 3.25	NA	NA	NA	3.00*	NA	3.00*
351 CID 2V V-8 Opt.	NA	NA	Opt.	NA	NA	NA	NA	NA	NA	3.00*	3.25*	3.00* 3.25*
400 CID 2V V-8 Opt.	NA	NA	(4) Opt.	NA	NA	NA	NA	NA	NA	3.00*	3.25*	3.00* 3.25*
429 CID 4V V-8 Opt.	NA	NA	(4) Opt.	NA	NA	NA	NA	NA	NA	3.00*	3.25*	3.00* 3.25*

*Available transmissions and ratios with air conditioning. (1) Standard on Gran Torino Sport and Torino Squire. (2) Available only on two-door models. Early 1972. (3) Standard ratio for California only. Optional ratio 3.25:1. (4) Required Option. (5) Not available in California until early 1972. **Not available in California with manual transmission. NA—Not Available.

WHEEL SPECIFICATIONS

Type.....Stamped Steel Ventilated Disc
with Safety Type Rims
Number of Studs.....5
Diameter and Rim Width
All models with E78, F78, G78 x 14 tires.....14" x 5.5"
Models using E70, F70, and G70 x 14.....14" x 6.0"
All models.....14" x 7.0" Magnum Wheels

STEERING SPECIFICATIONS

Linkage Type.....Parallelogram with
Cross-Link and Idler Arm
Gear Type.....Recirculating Ball and Nut Type
Overall Steering Ratio—Manual.....30.7:1
—Power.....21.7:1
Turning Diameter (Curb-to-Curb)—(2-door).....41.0 ft.
—(4-door).....42.3 ft.
Steering Wheel Diameter.....15.0 x 15.5 inch
Steering Wheel Turns (Lock-to-Lock)—Manual.....4.9
—Power.....3.5

BRAKE SPECIFICATIONS

	ALL SEDANS & 250, 302 STATION WAGONS	351—400—429† STATION WAGONS
FRONT DISC/ REAR DRUM		
BRAKE ROTOR DIA. (DISC)	10.72	10.72
DRUM Effective Area sq. in.	10 x 2 34.78 (Front) 63.86 (Rear)	10 x 2.5 80.68 (Rear)
Gross Lining Area sq. in.	36.08 (Front) 77.00 (Rear)	95.26 (Rear)
Swept Area sq. in.	210.0 (Front) 125.0 (Rear)	157.0 (Rear)
Lining Material Lining Attachment	Molded Asbestos Riveted	
Lining Width Front	1.80"	1.80"
Lining Width Rear	2"	2½"
Total Swept Area	335 sq. in.	367 sq. in.
Parking Brake—Type	Mechanical Application of Rear Brakes	

Power Brakes standard on Squire Station Wagons.
†Power Brakes required at extra cost.

TORINO GENERAL SPECIFICATIONS

BODY DIMENSIONS

TORINO MODEL	4-Door Pillared Hardtop		2-Door Hardtop		2-Door SportsRoof	Station Wagons	
	Low Series	High Series	Low Series	High Series		Low Series	High Series
GENERAL							
Wheelbase	118	118	114	114	114	118	118
Tread—Front	62.8	62.8	62.8	62.8**	63.4	63.4	63.4
—Rear	62.9	62.9	62.9	62.9**	63.4	63.5	63.5
Height—Overall	52.6	52.6	51.9	51.9	51.8	55.0	55.0
Length—Overall	207.7	211.3	203.7	207.3	207.3	211.5	215.1
Width—Overall	79.3	79.3	79.3	79.3	79.3	79.0	79.9
—At center pillar	76.8	76.8	77.2	77.2	77.2	76.8	76.8
FRONT DOOR ENTRANCE ROOM							
Door opening height (scuff plate to windcord)	36.6	36.6	36.7	36.7	36.7	36.7	36.7
Foot clearance	15.4	15.4	15.4	15.4	15.4	15.4	15.4
Entrance height (seat to windcord)	30.3	30.3	30.3	30.0	30.0	30.3	30.3
REAR DOOR ENTRANCE ROOM							
Door opening height (scuff plate to windcord)	36.5	36.5	—	—	—	36.3	36.3
Foot clearance	12.4	12.4	11.2	11.2	11.1	12.4	12.4
Entrance height (seat to windcord)	29.7	29.7	—	—	—	29.2	29.8
FRONT SEAT ROOM							
Head room (effective)	38.5	38.3	37.9	37.6	37.3	38.6	38.2
Maximum leg room to accelerator	42.5	42.1	42.5	42.1	41.9	42.5	41.9
Hip room	59.4	59.4	59.4	59.4	56.7	59.4	59.4
Shoulder room	58.4	58.4	58.4	58.4	57.2	58.4	58.4
Steering wheel to thigh clearance	4.1	4.1	4.1	3.9	3.9	4.1	4.1
REAR SEAT (OR WAGON 2ND SEAT)							
Head room (effective)	37.3	37.3	36.5	36.5	35.9	38.6	38.5
Minimum effective leg room	58.1	37.6	33.4	33.2	33.1	36.9	36.9
Hip room	59.4	59.4	58.0	58.0	57.9	59.4	59.4
Shoulder room	58.4	58.4	56.9	56.9	56.7	58.4	58.4
3RD SEAT ROOM							
Head room (effective)	—	—	—	—	—	—	37.2
Leg room (effective)	—	—	—	—	—	—	31.1
Hip room	—	—	—	—	—	—	38.0
Shoulder room	—	—	—	—	—	—	48.4
LUGGAGE COMPARTMENT							
Usable luggage capacity (cu. ft.)	14.8	14.8	14.8	14.8	16.0	—	—
Lift-over height	28.5	28.5	28.5	28.5	28.8	—	—
CARGO COMPARTMENT							
Cargo Volume (cu. ft.)	—	—	—	—	—	83.5*	83.5*
Maximum floor length (open tailgate)	—	—	—	—	—	109.5	109.5
Load floor length (closed tailgate)	—	—	—	—	—	87.3	87.3
Maximum rear opening width	—	—	—	—	—	51.0	51.0
Rear opening height	—	—	—	—	—	28.8	28.8
Minimum floor width (between wheelhousings)	—	—	—	—	—	48.2	48.2
GLASS AREA							
Windshield glass exposed surface area	1166.4	1166.4	1166.4	1166.4	1153.4	1187.6	1187.6
Side glass exposed surface area	1247.4	1247.4	1282.0	1282.0	1229.8	2514.0	2514.0
Backlight glass exposed surface area	1028.7	1028.7	1147.3	1147.3	1021.6	767.2	767.2
Total glass exposed surface area	3442.5	3442.5	3595.7	3595.7	3404.8	4468.8	4468.8
CURB WEIGHT (Pounds)							
302—2V, Automatic Transmission	3710	3755	3630	3680	3700	4110	4160†

*Additional 8.1 cubic feet for underfloor stowage

**Gran Torino Sport 63.4

†Squire 4180

TORINO COLOR AND TRIM

Charts shown reflect the color and trim combinations. Exterior colors and codes are in the first chart and the trim combinations follow. Colors and codes referenced are the same as those shown in your Color and Upholstery Book.

TORINO			
EXTERIOR COLORS AND CODES			
Color	Code	Color	Code
White	9A	Medium Green	
Bright Red	2B	Metallic	4P
Maroon	2J	Bright Green	
Dark Blue Metallic	3H	Gold Metallic	4B
Medium Blue Metallic	3D	Light Pewter Metallic	5A
Light Blue	3B	Medium Brown	
Ivy Glow	4C*	Metallic	5H
Dark Green Metallic	4Q	Medium Yellow Gold	6C
		Medium Bright Yellow	6E
		Gray Gold Metallic	6J
		Gold Glow	6F*

*Optional Color-Glow paints.

ALL TORINO (LOW SERIES) (*)			
ALL VINYL BENCH—STANDARD			
Interior Trims		Exterior Color Availability Codes	
Color	Code		
Black	AA	All	
Medium Blue	AB	9A, 3H, 3D, 3B	
Medium Green	AR	9A, 4C, 4Q, 4P, 4B, 6J, 5A	

*Includes Torino Station Wagon.

GRAN TORINO 2-DOOR HARDTOP and 4-DOOR PILLARED HARDTOP			
CLOTH AND VINYL BENCH—STANDARD			
Interior Trims		Exterior Color Availability Codes	
Color	Code		
Black	BA	All	
Medium Blue	BB	9A, 3H, 3D, 3B	
Medium Green	BR	4C, 4Q, 4P, 4B, 6J, 5A	
Light Gray Gold	BY	4C, 4Q, 4P, 4B, 6J	
Tobacco	BZ	5H, 6C, 6E, 5A, 6F	

GRAN TORINO 2-DOOR HARDTOP			
VINYL BENCH—OPTION			
Interior Trims		Exterior Color Availability Codes	
Color	Code		
White w/Black	CW	9A, 2B, 2J, 6E, 5A, 6F	
White w/Blue	CL	3H, 3D, 3B	
White w/Tobacco	C9	5H, 6C	
White w/Green	C5	4C, 4Q, 4P, 4B, 6J	

GRAN TORINO 2-DOOR HARDTOP and 4-DOOR PILLARED HARDTOP		
ALL VINYL BENCH—OPTION		
Interior Trims		Exterior Color Availability Codes
Color	Code	
Black	CA	All
Medium Blue	CB	9A, 3H, 3D, 3B
Ginger	CF	9A, 5H, 6C, 6E, 5A, 6F
Medium Green	CR	9A, 4C, 4Q, 4P, 4B, 6J, 5A

GRAN TORINO 2-DOOR HARDTOP		
KNITTED VINYL BUCKET—OPTION		
Interior Trims		Exterior Color Availability Codes
Color	Code	
Black	KA	All
Medium Blue	KB	9A, 3H, 3D, 3B
Ginger	KF	9A, 5H, 6C, 6E, 5A, 6F
Medium Green	KR	9A, 4C, 4Q, 4P, 4B, 6J, 5A
White w/Black	KW	9A, 2B, 2J, 6E, 5A, 6F
White w/Blue	KL	3H, 3D, 3B
White w/Tobacco	K9	5H, 6C
White w/Green	K5	4C, 4Q, 4P, 4B, 6J

GRAN TORINO 2-DOOR HARDTOP		
SPORT CLOTH BENCH—OPTION		
Interior Trims		Exterior Color Availability Codes
Color	Code	
Black	DA	All
Ginger	DF	9A, 6C, 6J, 5A, 6F

GRAN TORINO SPORT		
ALL VINYL BENCH—STANDARD		
Interior Trims		Exterior Color Availability Codes
Color	Code	
Black	FA	All
Medium Blue	FB	9A, 3H, 3D, 3B
Ginger	FF	9A, 5H, 6C, 6E, 5A, 6F
Medium Green	FR	9A, 4C, 4Q, 4P, 4B, 5A, 6F
White w/Black	FW	9A, 2B, 2J, 5A, 6F, 6E
White w/Blue	FL	3H, 3D, 3B
White w/Tobacco	F9	5H, 6C
White w/Green	F5	4C, 4Q, 4P, 4B, 6J

TORINO COLOR AND TRIM

GRAN TORINO SPORT

KNITTED VINYL BUCKET—OPTION

Interior Trims		Exterior Color Availability Codes
Color	Code	
Black	MA	All
Medium Blue	MB	9A, 3H, 3D, 3B
Ginger	MF	9A, 5H, 6C, 6E, 5A, 6F
Medium Green	MR	9A, 4C, 4Q, 4P, 4B, 6J, 5A
White w/Black	MW	9A, 2B, 2J, 5A, 6F, 6E
White w/Blue	ML	3H, 3D, 3B
White w/Tobacco	M9	5H, 6C
White w/Green	M5	4C, 4Q, 4P, 4B, 6J

GRAN TORINO SPORT

SPORT CLOTH BENCH—OPTION

Interior Trims		Exterior Color Availability Codes
Color	Code	
Black	EA	All
Ginger	EF	9A, 5H, 6C, 6E, 5A, 6F

TORINO BROUGHAM OPTION 2-DOOR HARDTOP and 4-DOOR PILLARED HARDTOP

CLOTH AND VINYL BENCH

Interior Trims		Exterior Color Availability Codes
Color	Code	
Black	NA	All
Medium Blue	NB	9A, 3H, 3D, 3B
Medium Green	NR	9A, 4C, 4Q, 4P, 4B, 6J, 5A
Light Gray Gold	NY	9A, 4C, 4Q, 4P, 4B, 6J
Tobacco	NZ	9A, 5H, 6C, 6E, 5A, 6F

GRAN TORINO STATION WAGON

ALL VINYL BENCH—STANDARD

Interior Trims		Exterior Color Availability Codes
Color	Code	
Black	CA	All
Medium Blue	CB	9A, 3H, 3D, 3B
Ginger	CF	9A, 5H, 6C, 6E, 5A, 6F
Medium Green	CR	9A, 4C, 4Q, 4P, 4B, 6J, 5A

GRAN TORINO STATION WAGON

KNITTED VINYL BENCH—OPTION

Interior Trims		Exterior Color Availability Codes
Color	Code	
Black	JA	All
Ginger	JF	9A, 5H, 6C, 6E, 5A, 6F

GRAN TORINO SQUIRE STATION WAGON

ALL VINYL BENCH—STANDARD

Interior Trims		Exterior Color Availability Codes
Color	Code	
Black	GA	All
Medium Blue	GB	9A, 3H, 3D, 3B
Ginger	GF	9A, 5H, 6C, 6E, 5A, 6F
Medium Green	GR	9A, 4C, 4Q, 4P, 4B, 6J, 5A

GRAN TORINO SQUIRE STATION WAGON

KNITTED VINYL BENCH—OPTION

Interior Trims		Exterior Color Availability Codes
Color	Code	
Black	HA	All
Ginger	HF	9A, 5H, 6C, 6E, 5A, 6F

VINYL ROOFS

Roof Color	Code	Exterior	Interior*
Black	1	All	All
White	2	All	All
Blue	3	3H, 3D, 3B	A, W, B
Green	5	4Q, 4C, 4P, 4B	A, W, R, Y
	5	6J	W, R, Y
	5	5A	R
Brown	7	5H, 6C, 6E, 6F	A, W, F, Z
	7	9A, 5A	F, Z

*Interior A—Black, W—White, B—Blue, R—Green
Y—Light Gray Gold, F—Ginger, Z—Tobacco

VINYL INSERT BODY SIDE MOULDING

Black only—Available with all vinyl roof colors and all exterior colors; N.A. on Torino Squire or with Laser Stripe.

LASER TAPE STRIPES

GRAN TORINO 2-DOOR AND GRAN TORINO SPORT—OPTION

Exterior Color	Code	Red	Blue	Green	Brown
Bright Red	2B	X			
Maroon	2J	X			
Dark Blue Metallic	3H		X		
Ivy Glow	4C			X	
Medium Blue Metallic	3D		X		
Light Blue	3B		X		
Dark Green Metallic	4Q			X	
Gold Glow	6F				X
Medium Green Metallic	4P			X	
Bright Green Gold Metallic	4B			X	
Medium Brown Metallic	5H				X
Medium Yellow Gold	6C				X
Medium Bright Yellow	6E				X
Gray Gold Metallic	6J			X	
Light Pewter Metallic	5A	X		X	X
White	9A	X (a)	X (b)	X (c)	X (d)

(a) Black or white interior. (b) Blue interior. (c) Gray Gold or Green interior. (d) Ginger or Tobacco interior.

TORINO COLOR AND TRIM GUIDE

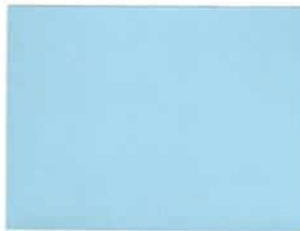
EXTERIOR COLORS



2B Brt. Red



2J Maroon



3B Lt. Blue



3D Med. Blue Met.



3H Dk. Blue Met.



4B Brt. Green Gold Met.



4P Med. Green Met.



4Q Dk. Green Met.



5A Lt. Pewter Met.



5H Med. Brown Met.



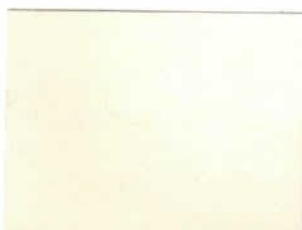
6C Med. Yellow Gold



6E Med. Brt. Yellow



6J Gray Gold Met.



9A White



4C Ivy Glow
(RPO)



6F Gold Glow
(RPO)

TORINO COLOR AND TRIM GUIDE

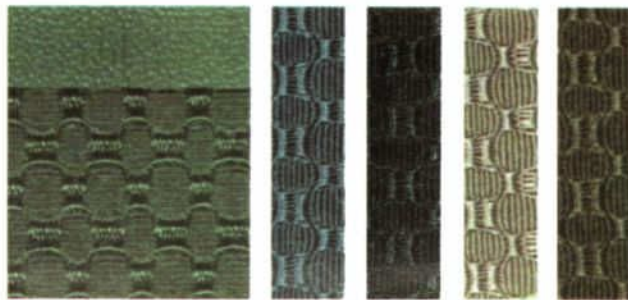
INTERIORS

CLOTH & VINYL (BROUGHAM OPT.) Gran Torino
2 Dr. H/Top & 4 Dr. Pillared H/Top



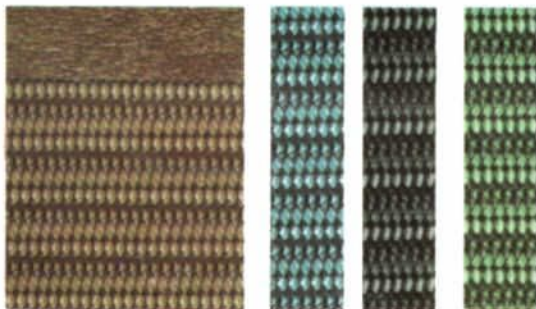
Tobacco Med. Blue Med. Green Lt. Gray Gold Black

CLOTH & VINYL (STD.) Gran Torino
2 Dr. H/Top & 4 Dr. Pillared H/Top



Med. Green Med. Blue Black Lt. Gray Gold Tobacco

KNITTED VINYL (OPT.) Gran Torino—2 Dr. H/Top**/Station Wagon*/Squire Wagon*
Gran Torino Sport—2 Dr. H/Top**/2 Dr. Fastback**

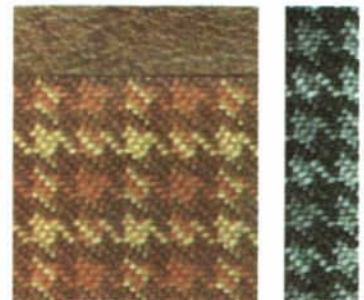


Ginger Med. Blue Black Med. Green

* Available Black & Ginger only.

** Also available in White w/Black, White w/Blue, White w/Green, White w/Tobacco — Not Illustrated.

SPORT CLOTH (OPT.) Gran Torino—2 Dr. H/Top
Gran Torino Sport—2 Dr. H/Top & 2 Dr. Fastback



Ginger Black

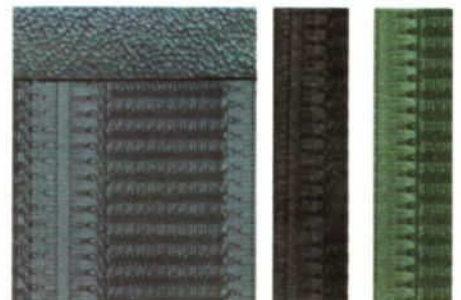
VINYL (STD.) Gran Torino Sport—2 Dr. H/Top*/2 Dr. Fastback*
(OPT.) Gran Torino—2 Dr. H/Top*/4 Dr. Pillared H/Top
Station Wagon/Squire Wagon



Med. Blue Black Ginger Med. Green

* Also available in White w/Black, White w/Blue, White w/Green, White w/Tobacco — Not Illustrated.

VINYL (STD.) Torino Station Wagon
2 Dr. H/Top
4 Dr. Pillared H/Top



Med. Blue Black Med. Green